



ASUS Eee Pad Transformer Back Panel Replacement

This guide will describe the procedure of removing the back panel in just four steps.

Written By: Sandy Babich



INTRODUCTION

Repairing a damaged back panel is very important, the back panel protects all the inner workings in the tablet and needs to be in good condition to prevent permanent damage in the device. Removing the back panel also allows access to everything inside of the device and is an essential first step to all other repairs involved with the TF101 Tablet.

TOOLS:

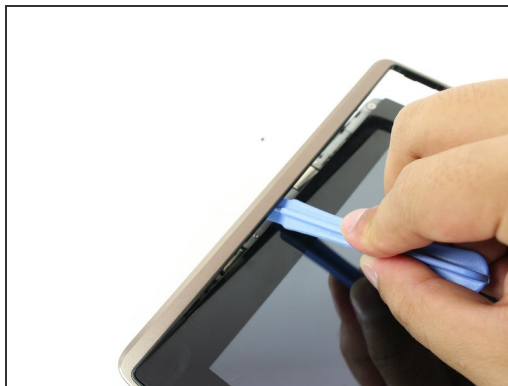
- [T5 Torx Screwdriver](#) (1)
 - [Phillips #00 Screwdriver](#) (1)
 - [iFixit Opening Tools](#) (1)
-

Step 1 — Back Panel



- Use T5 Torx Screwdriver to remove two 4.5 millimeter T5 screws on either side of the port on the bottom of the tablet.

Step 2



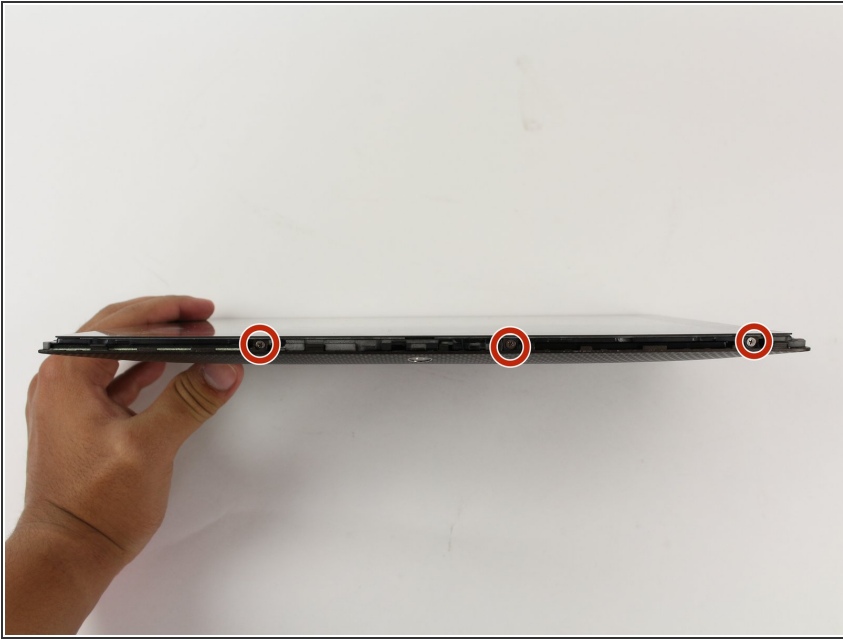
- Use the Plastic Opening Tool to pry between the main tablet body and the outer rim casing. Remove the outer rim casing by prying all the way around the device and pulling the rim upward.
- ⓘ The physical buttons are located on the outside of the rim on the right side, proceed with the guide to locate internal buttons.

Step 3



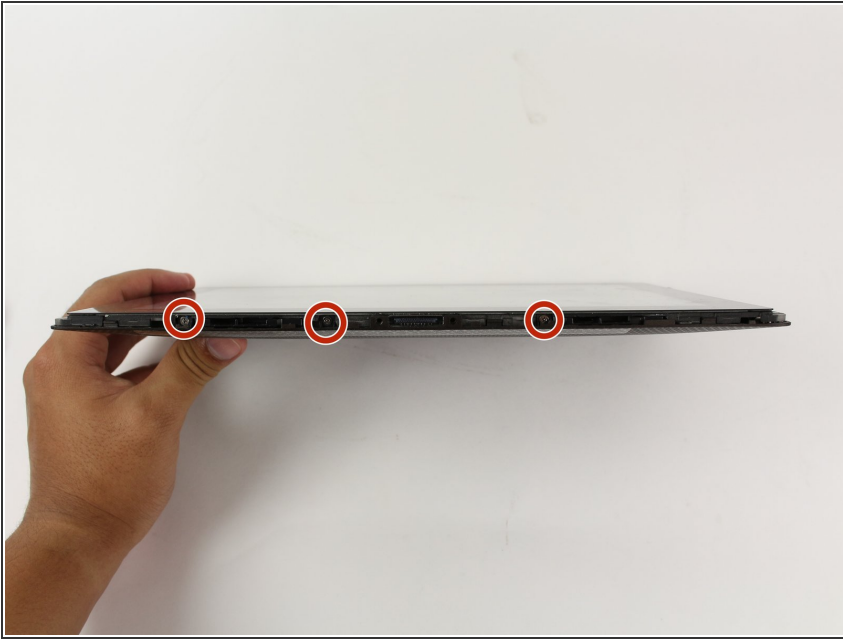
- Remove the four 2 millimeter Phillips #00 screws at the corners of the tablet.

Step 4



- Use a Phillips #00 Screwdriver to remove the three 3 millimeter screws securing the front panel to the back panel found above the camera area, on the top portion of the tablet.

Step 5



- Use a Phillips #00 Screwdriver to remove the three 3 millimeter screws securing the front panel to the back panel found on the bottom portion of the tablet near the port.

Step 6



- Remove back panel by pulling away from the remaining device.

To reassemble your device, follow these instructions in reverse order.