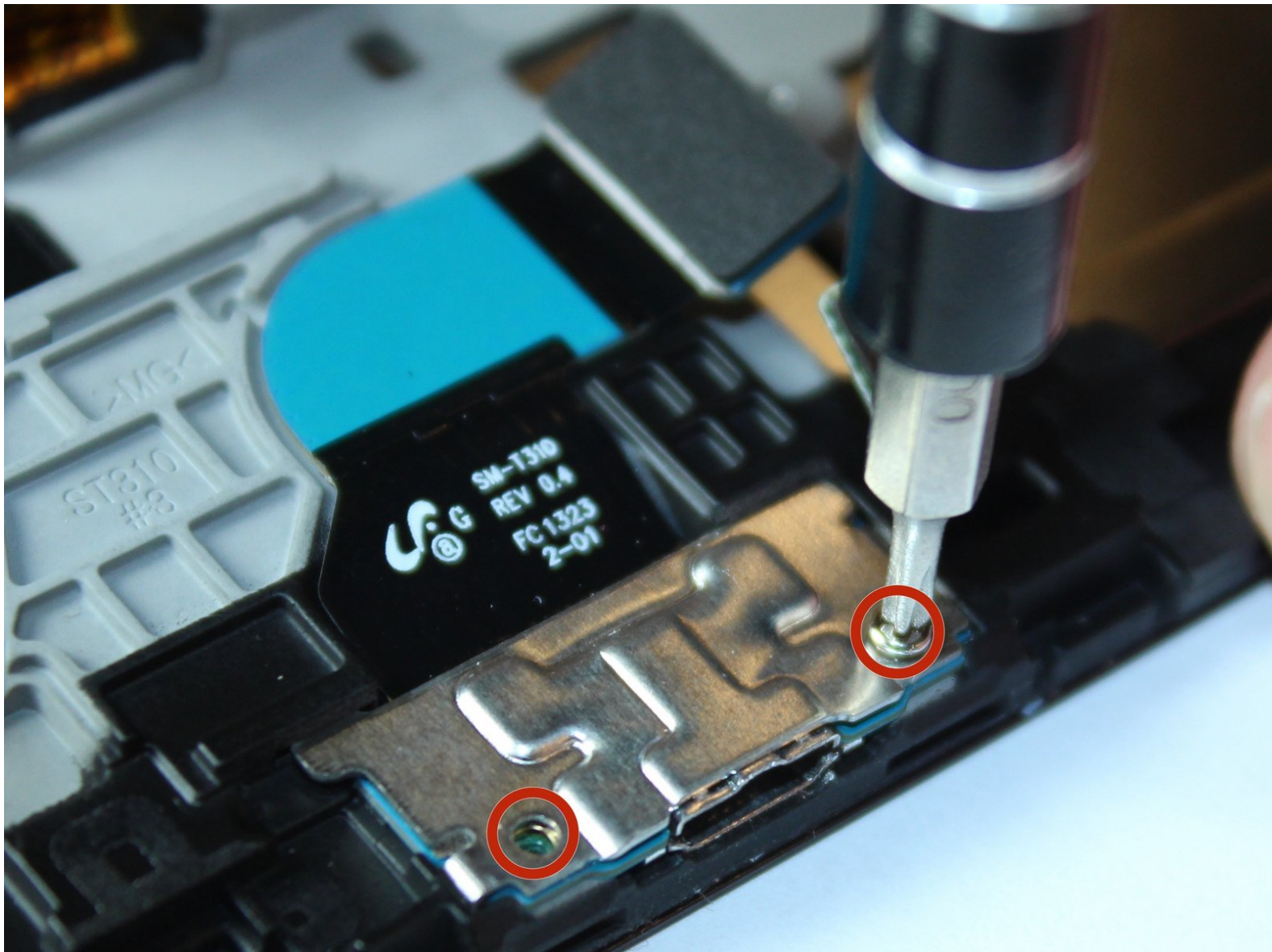




# Samsung Galaxy Tab 3 8.0 Charging Port Replacement

If the device will not charge despite a power cable and battery replacement, replacing this component is the likely solution.

Written By: Peter Paoletta



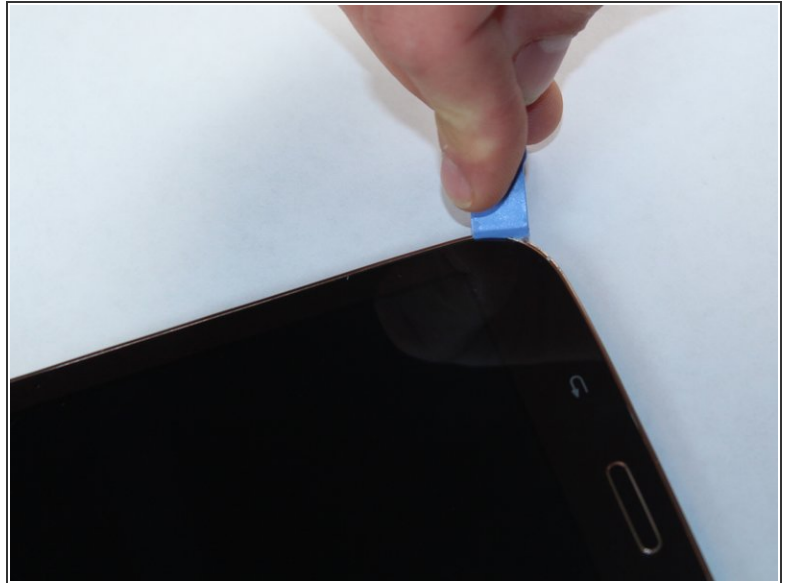
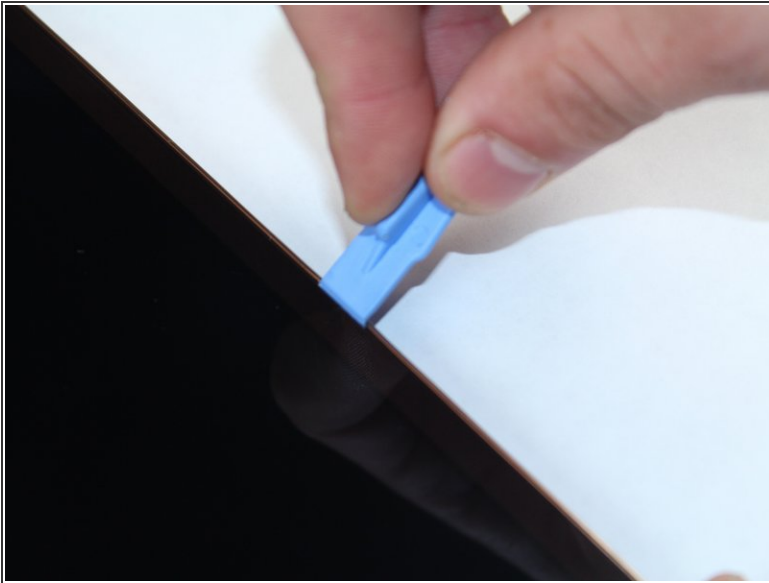
 **TOOLS:**

- [iFixit Opening Tools](#) (1)
- [Tweezers](#) (1)
- [Phillips #000 Screwdriver](#) (1)

 **PARTS:**

- [Galaxy Tab 3 8" Wi-Fi Charging Assembly](#) (1)
- [Samsung Galaxy Tab 3 8.0 Replacement Charging Port](#) (1)

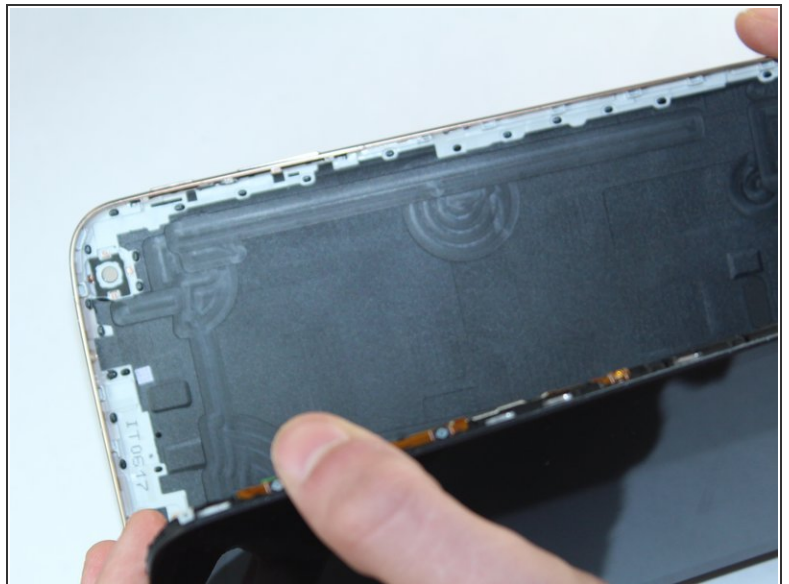
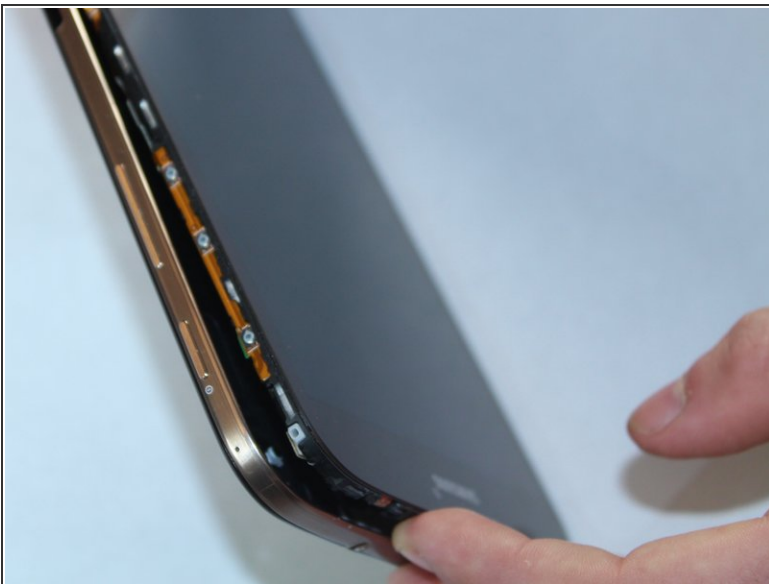
## Step 1 — Battery - Open up the tablet



- Start out by separating the screen from the back cover using the larger plastic opening tool to pry them apart.

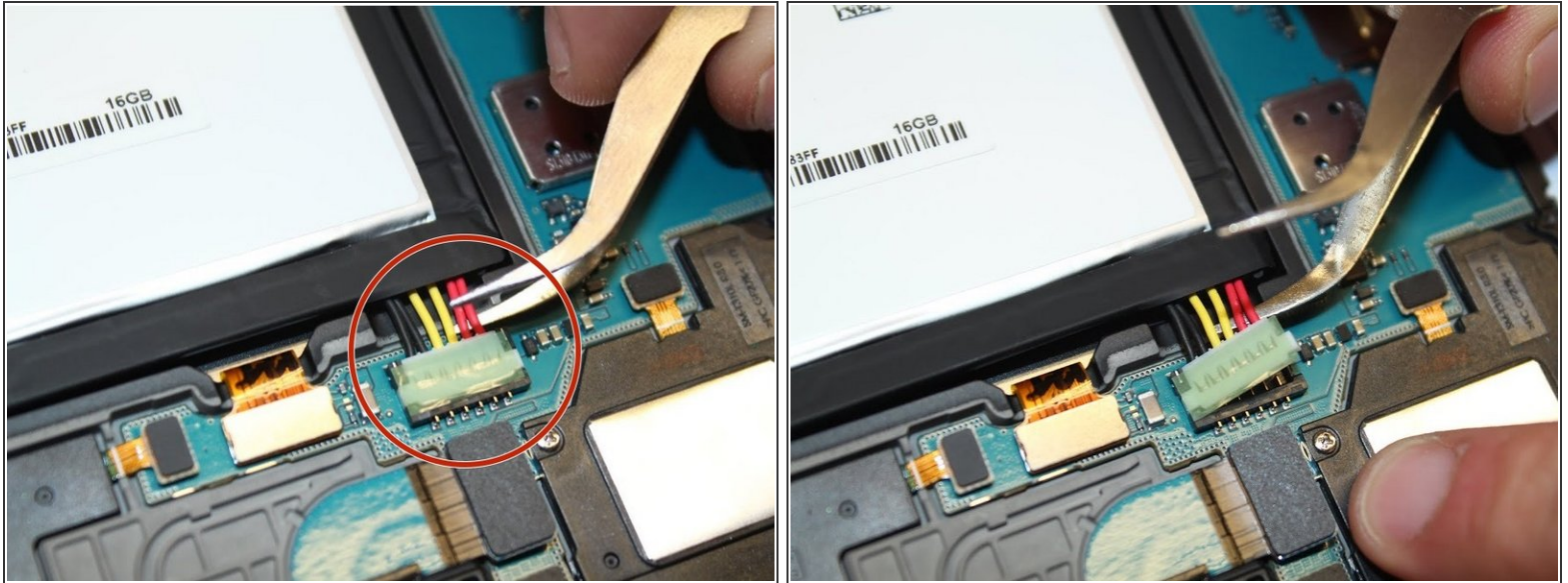
⚠ Be careful when removing the screen as negligence can cause damage.

## Step 2 — Remove Back Cover



- Once every part of the screen is separated from the back cover, you should be able to fully remove it with your hands.

### Step 3 — Disconnect Battery



- To remove the battery you must use something small, such as tweezers, to disconnect the battery from its port.

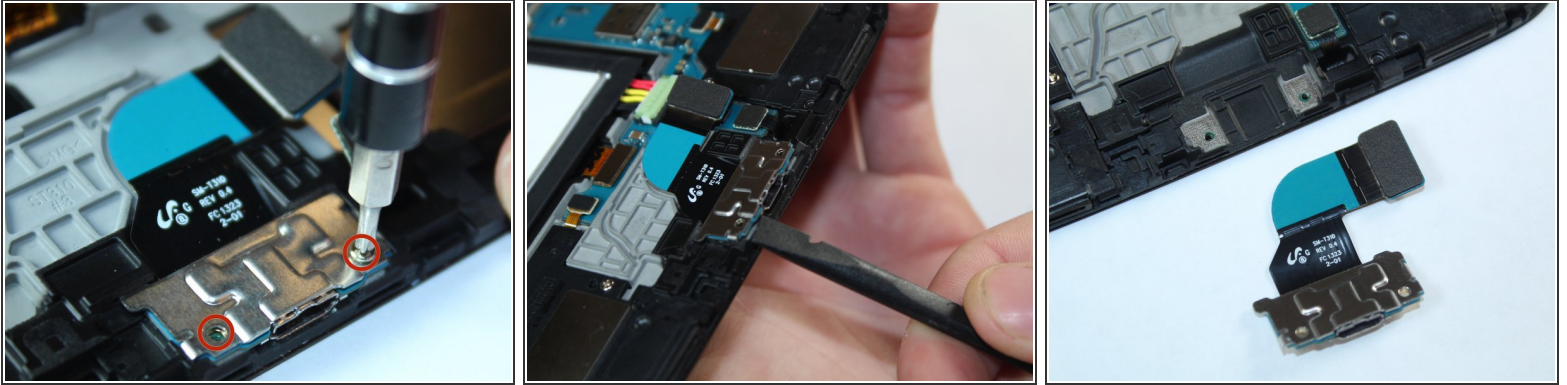
**i** Note: the connection lifts up to remove.

### Step 4 — Remove Battery



- After the battery is disconnected, use the pulling tab to safely remove the battery.

## Step 5 — Unscrew Charging Port



- Unscrew the 2.9mm screws from the charging port with Phillips Head #000 and use the spudger to pry it up from under the port to remove component from the device.

To reassemble your device, follow these instructions in reverse order.