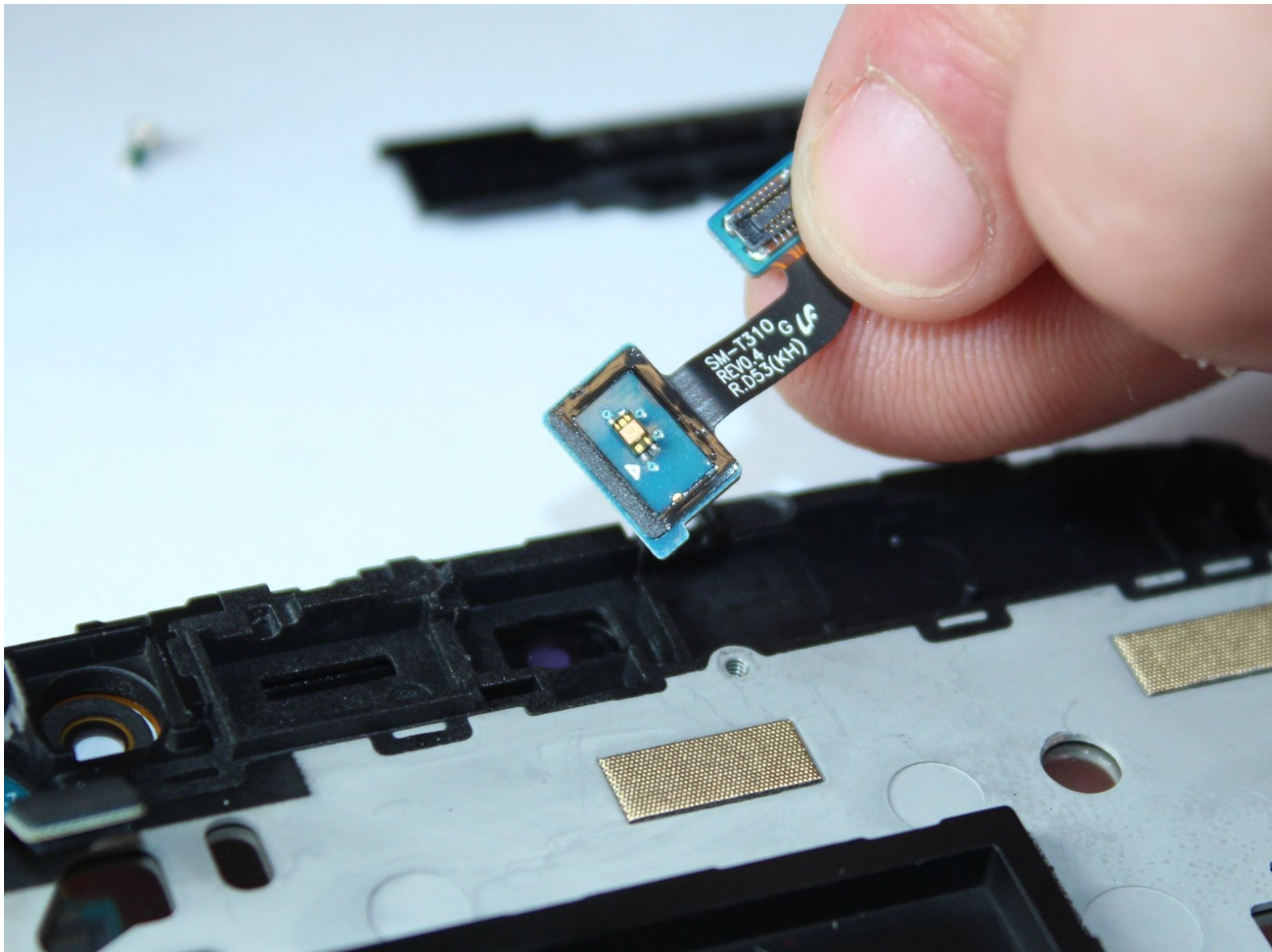




Samsung Galaxy Tab 3 8.0 Proximity Sensor Replacement

This Component turns the screen off when idle and back on when in use. If that functionality is impaired, follow this guide for replacement.

Written By: Peter Paoletta



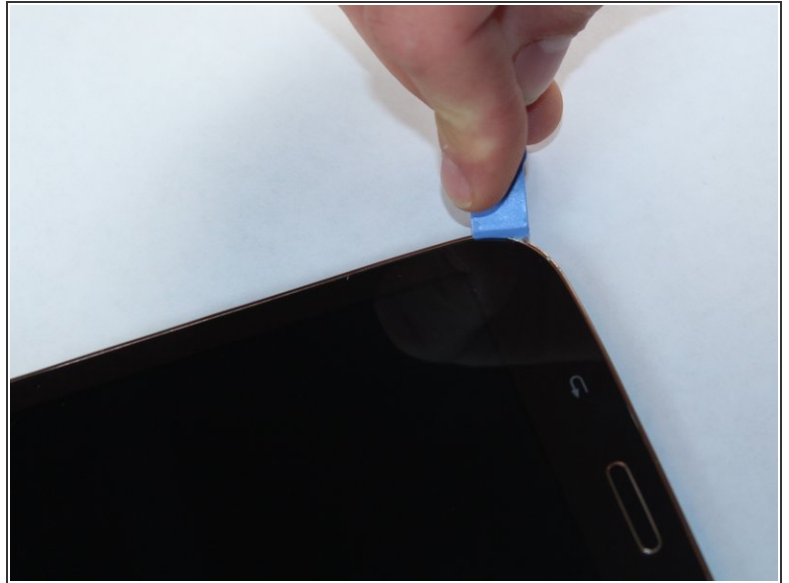
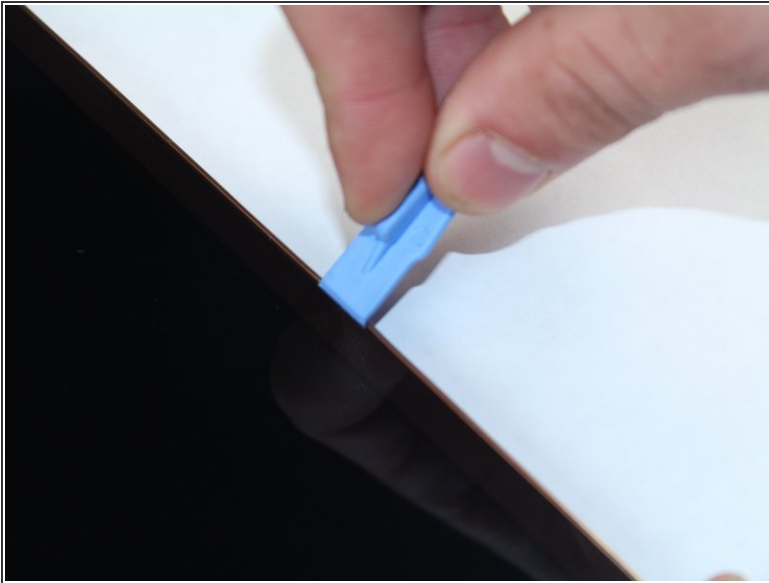
**TOOLS:**

- [iFixit Opening Tools](#) (1)
- [Tweezers](#) (1)


**PARTS:**

- [Samsung Galaxy Tab 3 8.0 Proximity Sensor](#) (1)

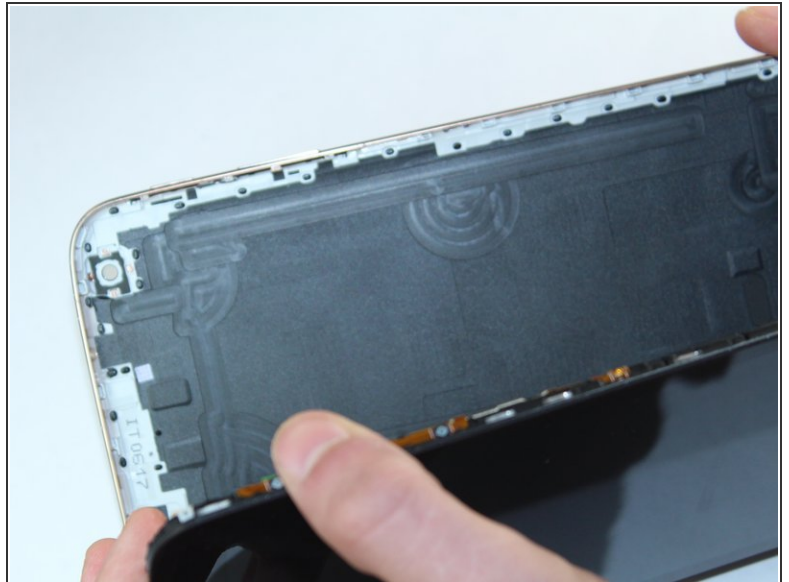
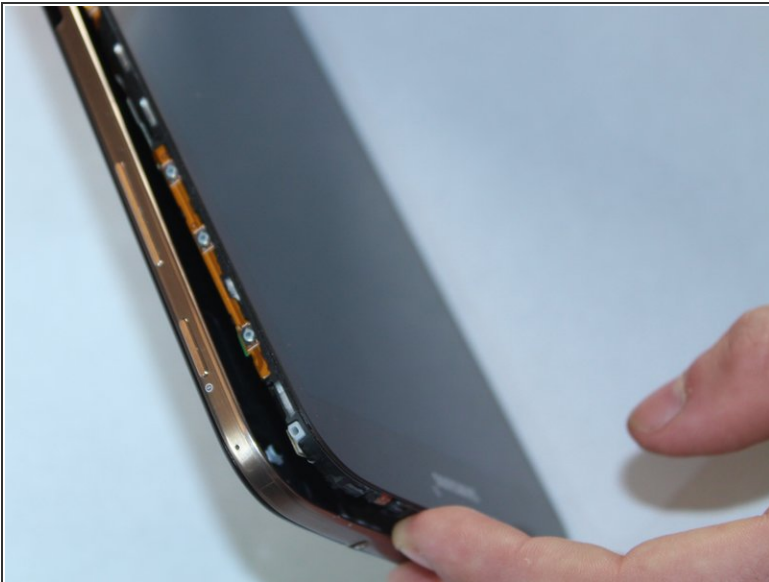
Step 1 — Battery - Open up the tablet



- Start out by separating the screen from the back cover using the larger plastic opening tool to pry them apart.

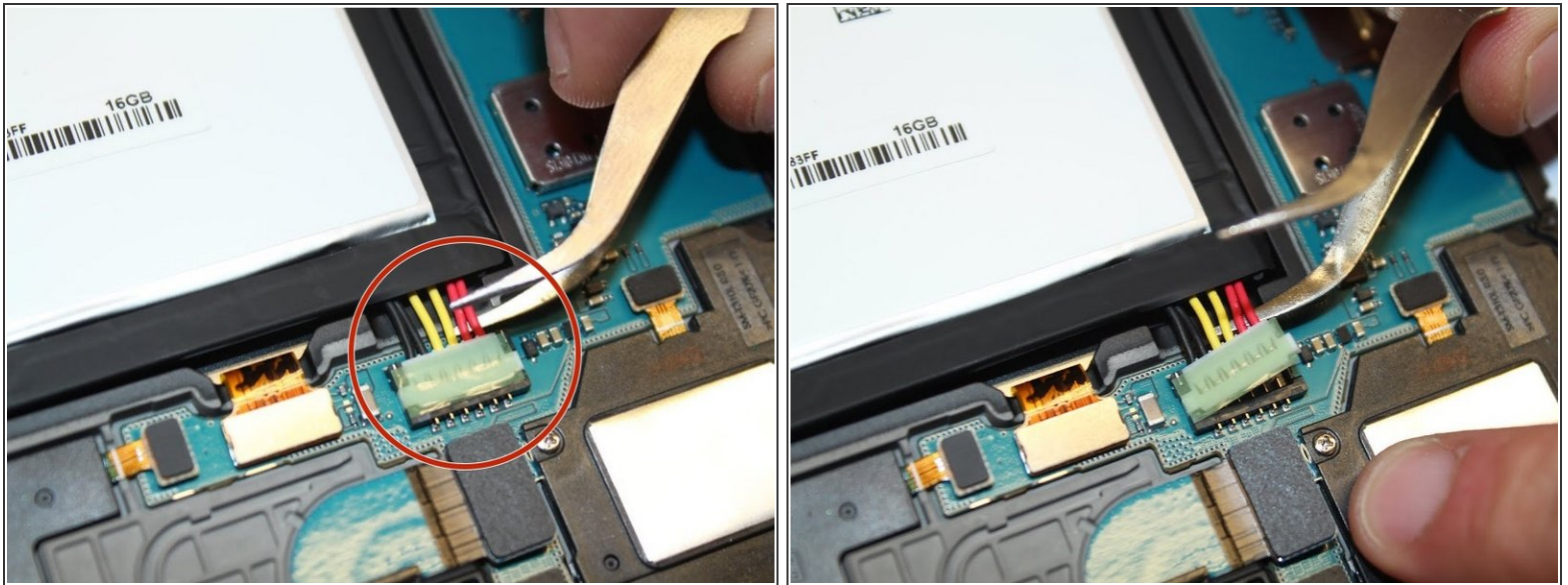
 Be careful when removing the screen as negligence can cause damage.

Step 2 — Remove Back Cover



- Once every part of the screen is separated from the back cover, you should be able to fully remove it with your hands.

Step 3 — Disconnect Battery



- To remove the battery you must use something small, such as tweezers, to disconnect the battery from its port.

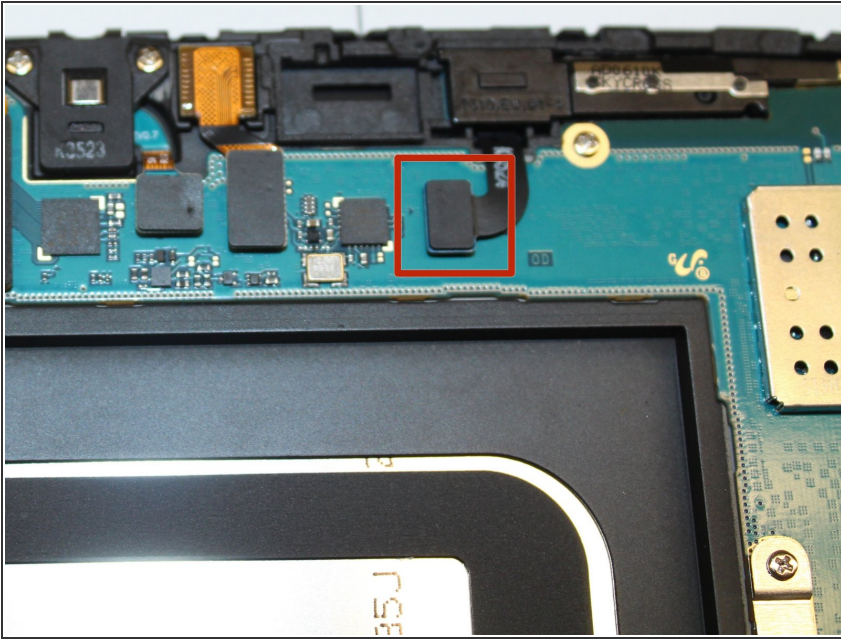
i Note: the connection lifts up to remove.

Step 4 — Remove Battery



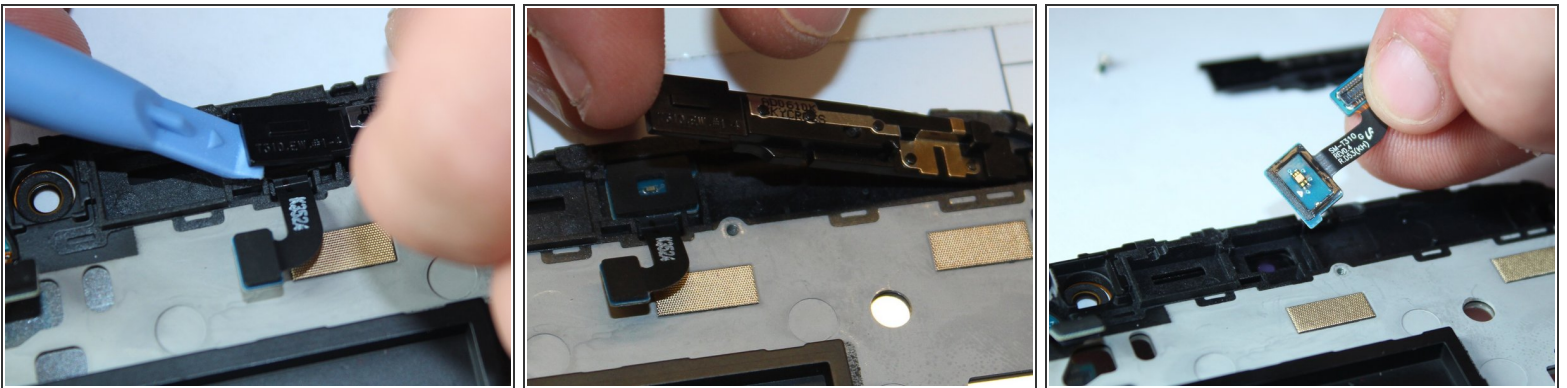
- After the battery is disconnected, use the pulling tab to safely remove the battery.

Step 5 — Disconnect from Motherboard



- With a plastic remover tool, gently unseat the connection of the proximity sensor to the motherboard.

Step 6 — Remove Proximity Sensor



- Gently wedge the plastic remover tool and pry antenna loose, and lift it from the proximity sensor. The Sensor can then simply lifted from the device.

To reassemble your device, follow these instructions in reverse order.