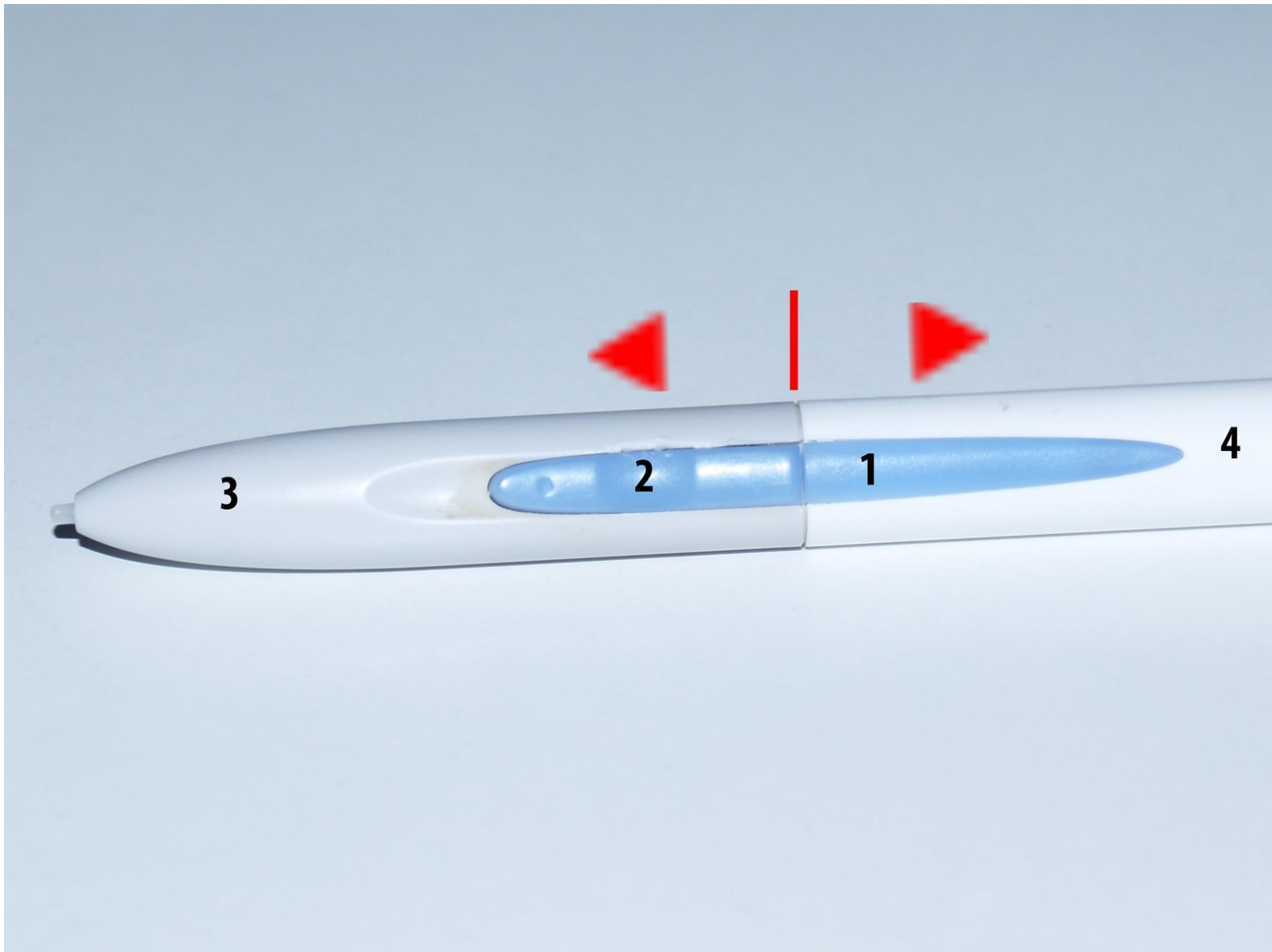




# Graphics Tablet Stylus Teardown

A look inside a Bamboo Fun tablet pen.

Written By: pelos



---

## INTRODUCTION

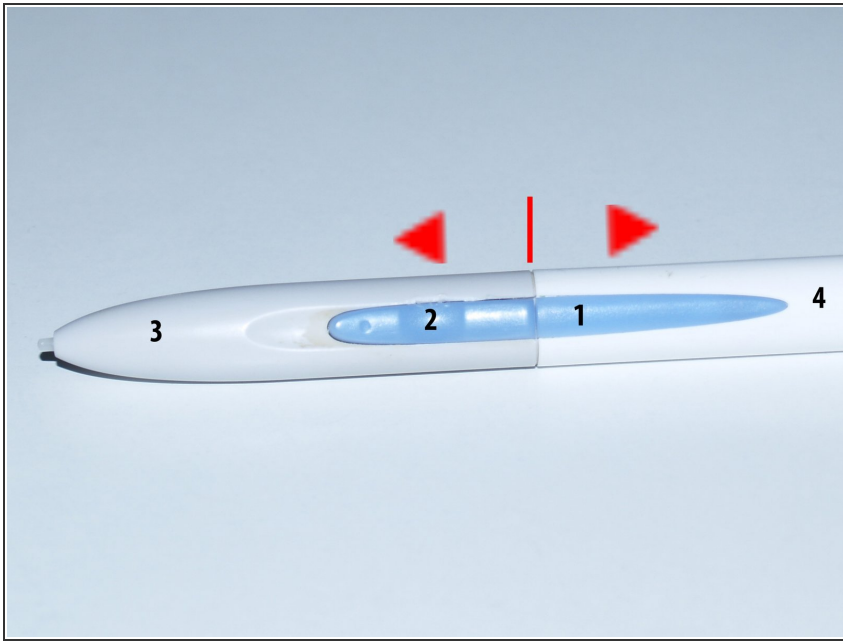
Do you ever wonder about what's inside a wacom tablet pencil and how it works? mine has being inside water some seconds and stopped work. This is what i did...

---

### TOOLS:

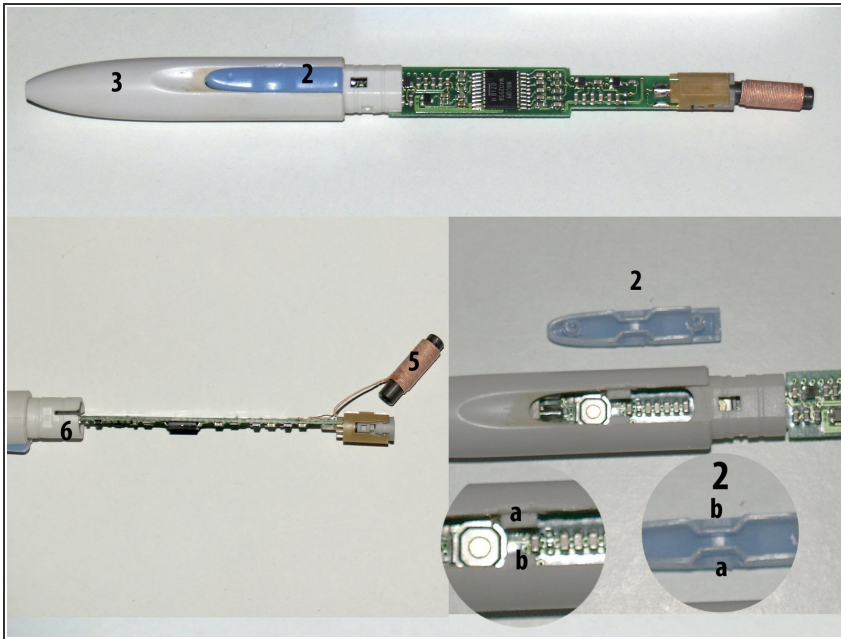
- [Precision Utility Knife](#) (1)
-

## Step 1 — Pen



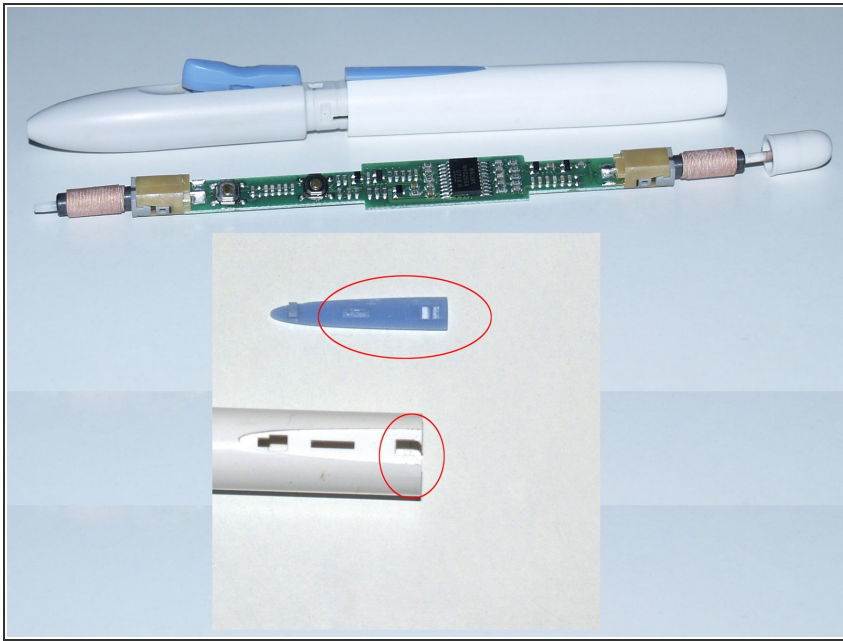
- First, carefully pull off the little plastic piece number 1. You must use a knife or something with sharp edge to wedge.
- After this, you are ready to disassemble pen's exterior case, pulling strongly between parts 3 and 4. If it's hard, you can turn pieces 3 and 4 between them, but only a bit because electronics inside has a guide that lock it into the case.

## Step 2



- This is what you are going to find inside. Next step is release primary and secondary buttons (piece nº 2) pulling up straightly and softly, being carefull do not break a and b parts that hold the button.
- Other piece we must take care is piece number 5, which is quite fragile because is glued to the board through 2 thin wires that could brake. This part keeps wet around the wire and we must dry it perfectly keeping it warm.
- Point number 6 shows how board engages the pen case. This is why we might no turn too much pieces 3 and 4 between them in step 1 to keep us avoid to break the circuit board.

### Step 3



- And here is what's inside a graphic tablet ballpen and what i've broke disassembling.
- I hope this tutorial helps you, now that you know what's inside a graphic tablet pencil, you'll gess which is your trouble.

To reassemble your device, follow these instructions in reverse order.