



Motorola Moto G 1st Generation Power and Volume Buttons Replacement

This guide will show you how to replace broken or missing buttons on your Moto G.

Written By: Rebecca Montgomery



INTRODUCTION

The buttons on the Moto G can sometimes get lost or misaligned. This guide will show you how to replace them or fix them.

TOOLS:

- [iFixit Opening Tools](#) (1)
-

Step 1 — Removing the Cover



- You can remove the outer cover on the back of the phone by using a plastic opening tool. After removal the inner back cover will be exposed as shown.
- This part is moderately difficult, especially if you've never taken the outer back cover off before this point.
- It may take you several tries, but please be patient. The cover is surprisingly flexible, but not enough to withstand a lot of pressure.

Step 2



- Shut down the phone.
- Push SIM card until it pops out.
- Remove SIM card.

Step 3 — Removing the Back Plate



- Using a T5 Torx screwdriver head, take out the 14 screws (3.5 mm diameter and 5 mm long) that hold the back plate in place.
- Make sure to keep all of the screws together, as they are very easily lost.
- The magnetic project mat or a container is a great way to keep all the little metal screws as well as other small metal pieces from being lost.

Step 4 — The Inside of your Phone



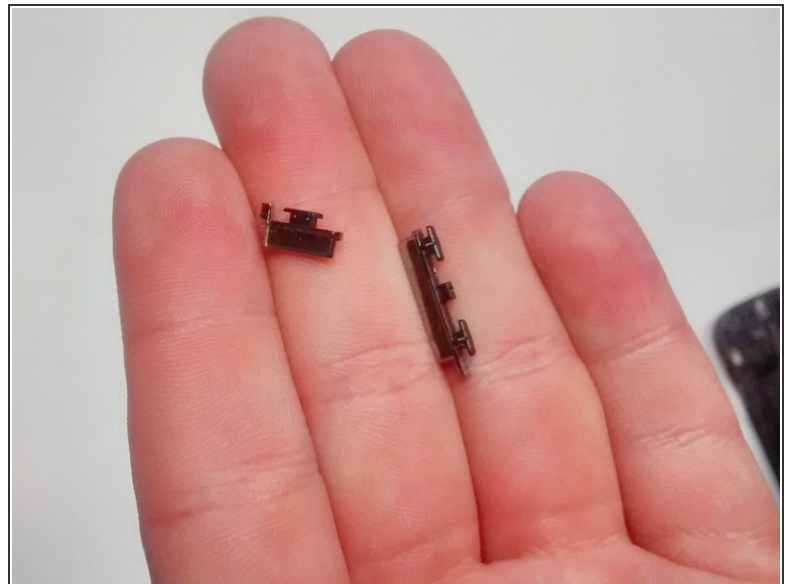
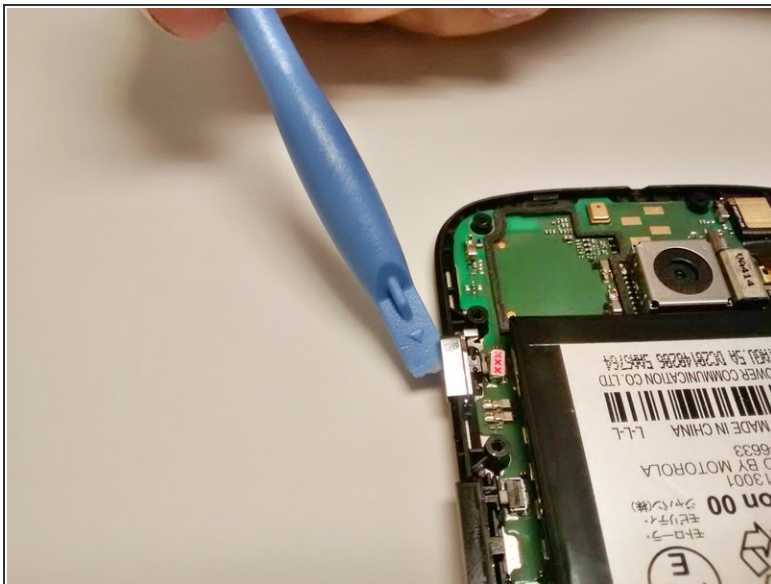
- Use the plastic opening tool to take out the inner back cover after all the screws have been removed.
- This will expose the motherboard and the attached battery.
- Take note that once the inner back cover is removed the volume and power buttons on the side can easily fall out or be removed.

Step 5 — Locating the Buttons



- The buttons are extremely easy to replace and may fall out when opening the phone.
- They are located on the left side when the front plate is facing down.

Step 6 — Removing the Buttons



- Use a tool or your fingers to gently lift the button out of its socket.
- To replace, line the new button up in the socket and press down.
- The buttons are not secured in anyway, so securing the back inner cover before turning the device over or jostling the device is a good idea. This will ensure buttons stay in place.

This document was generated on 2020-11-25 04:22:42 PM (MST).

To reassemble your device, follow these instructions in reverse order.