



撰写者: Walter Galan



## 介绍

Join us as we take a peek inside at Apple's newest revision of the Mac Mini, now with an HDMI port!

Check out the [YouTube video slideshow](#) of the teardown as well!



### 工具:

- [Spudger](#) (1)
  - [T8 Torx Screwdriver](#) (1)
-

## 步骤 1 — Mac Mini Mid 2010 Teardown



- Well folks, after much clamor, it seems the engineers at Apple have finally included an HDMI port in an **actual** Apple product.
- Notable Tech Specs:
  - 2.4 or 2.66 GHz Intel Core 2 Duo processor
  - 2 GB of RAM (expandable up to 8 GB)
  - NVIDIA GeForce 320M graphics processor with 256MB of shared DDR3 SDRAM (the same as the most recent MacBook)
  - HDMI port with support for up to 1920-by-1200 resolution
  - AirPort Extreme 802.11n Wi-Fi wireless networking
  - SD card slot

## 步骤 2



- Contents of box:
  - Mac Mini
  - HDMI to DVI adapter
  - Power cord

### 步骤 3



- Departing from previous generations, the Mini's unibody top enclosure is machined from a single block of aluminum.
- Measuring 1.4 x 7.7 x 7.7 inches and weighing only 3 lbs, this is truly one for the books.
- The black logo and other accents match quite nicely with the styling of Apple's iPad and recent iMacs. Congrats, Mini, you're no longer the black sheep of the family!
- The model number for this new unit is A1347.

## 步骤 4



- The Mini's new port layout is indeed surprising:
  - AC power in
  - Built-in 10/100/1000BASE-T ethernet
  - Firewire 800
  - HDMI
  - Mini DisplayPort
  - Four USB 2.0 ports, down one from the previous Mac Mini
  - SD card slot

## 步骤 5




- In comparison to the Mac Mini model A1176, the Mid 2010 is thinner and wider.
- There is a definite difference in height between the Mid 2010 and previous iterations.



## 步骤 6



- With a simple counter-clockwise twist, the black access plate can be removed for easy RAM and fan access.
-  Gone are the days of the [putty knife](#)...you will be missed old friend...

## 步骤 7



- Much like many other new Apple products, removing the RAM is quite feasible this time around.
- This little guy comes with two SO-DIMM slots capable of supporting up to 8GB of RAM.
- Our base unit came strapped with two gigs of RAM.

## 步骤 8



- After removing two screws, the fan can be lifted out to access its power connector.
- The connectors inside this machine look pretty consistent with those found in Apple's current product lineup. Nothing too new here.
- All three fan screws are isolated with rubber dampers; a feature not seen on older apple machines. Low noise and vibration are big selling points for Apple these days, and the new Mini's idle emission of 14 dB is a testament to those design goals.



## 步骤 9



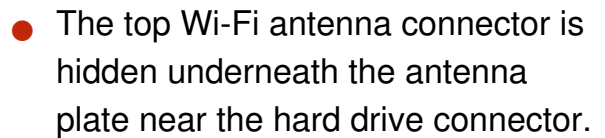
- Like previous generations, the new Mini is cooled by a single brushless fan.
- The extremely high blade density of the blower pushes a good amount of air while keeping noise at a minimum.

## 步骤 10



- The Wi-Fi antenna plate is held in place by four screws.
- After a good deal of wiggling, the antenna plate can be slid out from under the lip of the outer case.

## 步骤 11



## 步骤 12



- Removing the cowl gives access to various connectors on the logic board:
  - Hard drive flex cable
  - Optical drive flex cable (in the server model, this is where the second hard drive flex cable is)
  - Thermal sensor cables
  - Infrared board cable

## 步骤 13



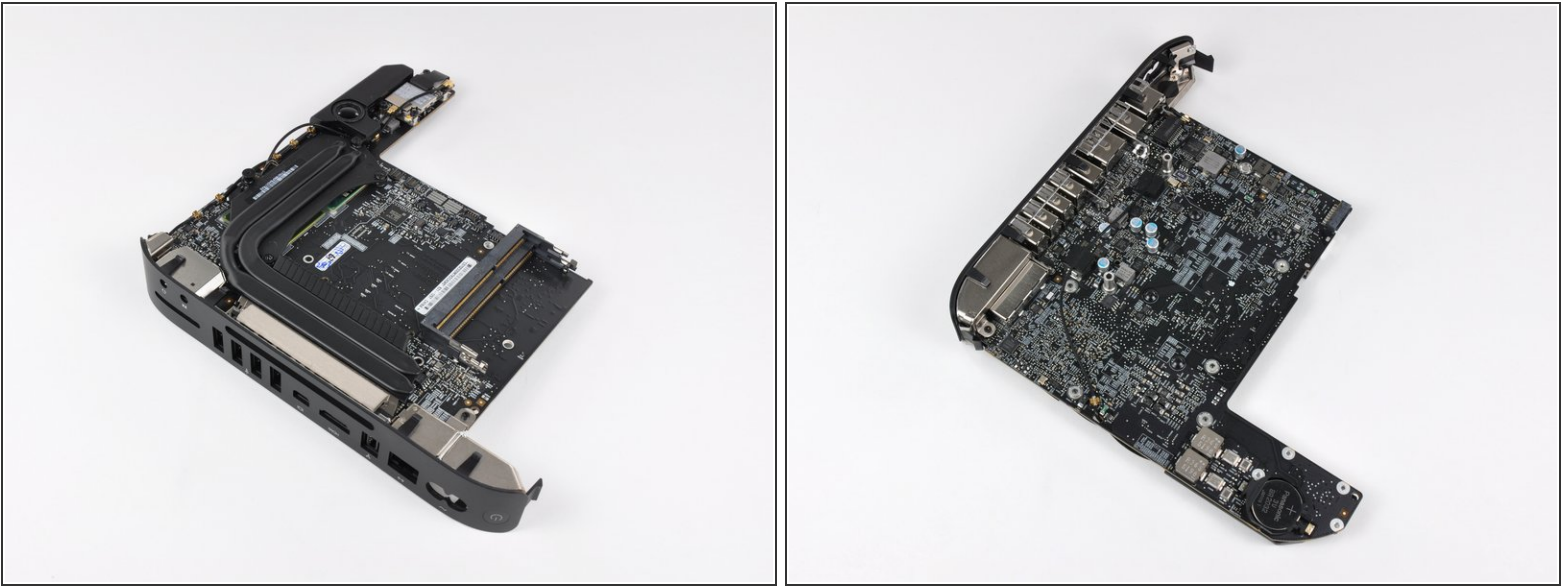
- Behold, iFixit's specialized Mac Mini Mid 2010 logic board removal tool!
- There are two blind holes in the case of the Mini that are meant for the ends of Apple's u-shaped logic board removal tool.
- Being the shadetree mechanics that we are, we decided to circumvent the special Apple tool in favor of something that works just fine while keeping extra dollars out of Mr. Jobs' pockets.
- ⓘ We now carry our own [Mac Mini Logic Board Removal Tools](#) (shown in the second picture) designed with a rubberized high-torque handle to the exact specifications needed to remove the logic board without the risk of inserting abrasive tools into a delicate logic board.



## 步骤 14



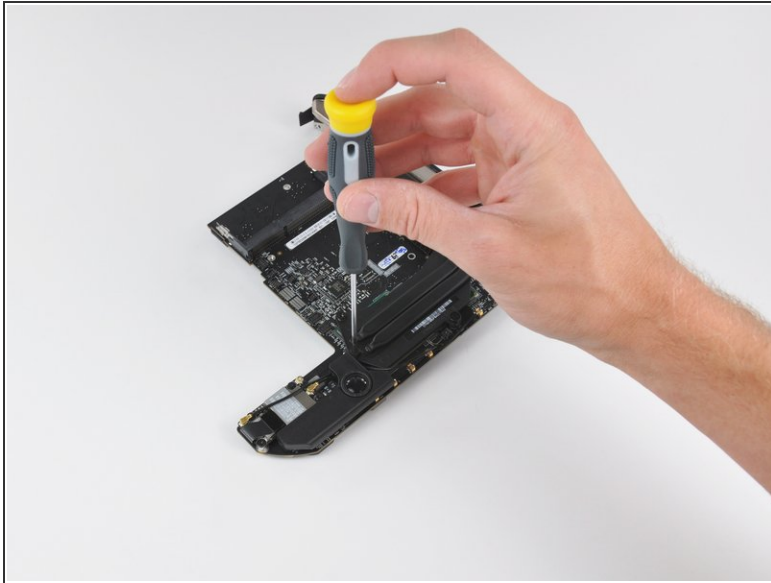
- ## 步骤 15



- 13 / 20 έίμ

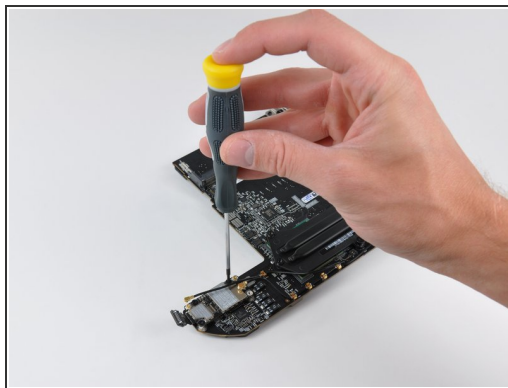
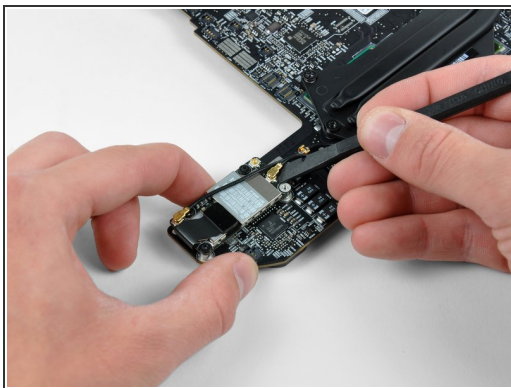


## 步骤 16



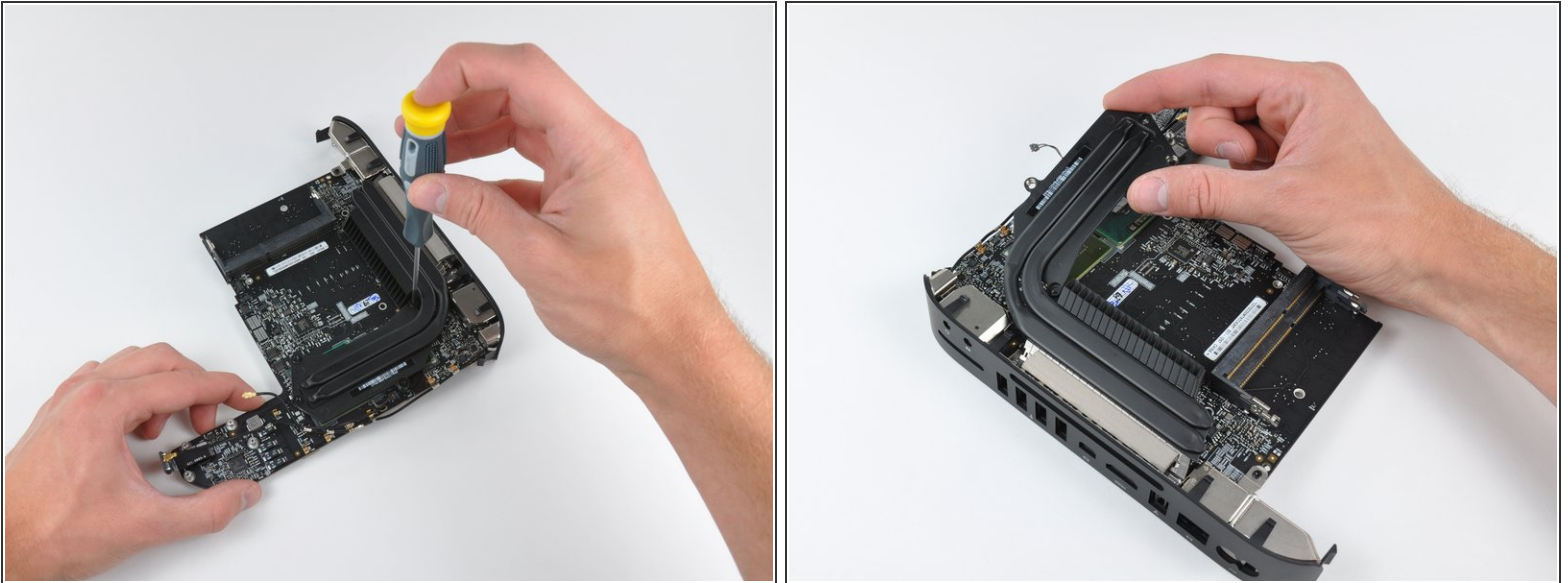
- Two screws secure the speaker assembly to the logic board.
- The Mini's 3/8" woofer dome won't be popping ear drums anytime soon.

## 步骤 17



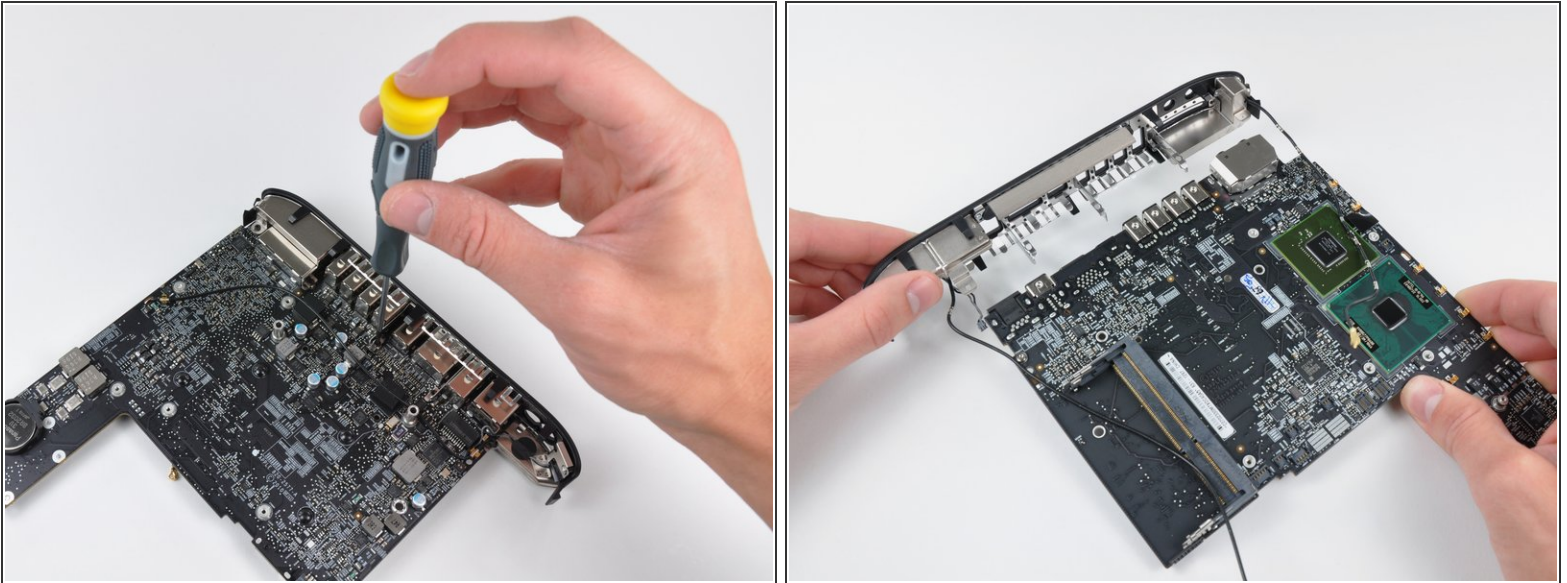
- Next to where the speaker was located, we find the AirPort Extreme card.
- The Mac Mini Mid 2010 has 802.11n Wi-Fi wireless networking, as well as Bluetooth 2.1 with Enhanced Data Rate technology.
- After disconnecting the remaining two antenna connectors and its data cable, the AirPort card can be easily removed from the logic board.

## 步骤 18



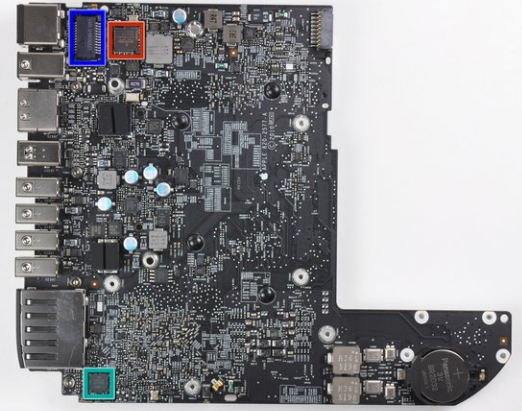
- A couple of spring-loaded T8 Torx screws secure the oddly shaped heat sink to the processors.
- In keeping with its space saving design, the fins directing air toward the vent hole are slanted to allow for better fan placement.

## 步骤 19



- The I/O frame is held to the logic board by a few T6 Torx screws.
- The two I/O bezel antennas are more visible in this picture. The long antenna wires are grounded periodically along their length, presumably for better signal transmission to the important part - the antennas themselves.

## 步骤 20



- The bare logic board.
- The brains of the unit feature:
  - [Intel P8600 2.4 GHz Core 2 Duo](#) processor
  - [NVIDIA GeForce 320M](#) graphics processor with 256MB of shared DDR3 SDRAM
- Other notable chips include:
  - [Broadcom BCM57765](#) integrated gigabit ethernet and memory card reader controller
  - Cirrus 4206ACNZ audio controller
  - [Delta LFE9249-R](#) discrete LAN filter



- The Mac Mini comes with either a 320GB or 500GB SATA hard drive.
- Sadly, there's only one hard drive in our non-server model.
- Need more storage? Only time will tell if this Mac Mini is as [easily modified](#) as its predecessor. For now, we recommend just getting the server edition.



## 步骤 22



- The new Mini's power supply churns out a minuscule 7 Amps at 12V. Compare that to the 25.8 Amps at 12V cranked out by the [iMac Intel 27"](#).
- Like its iMac cousin, the Mac Mini finally says goodbye to external AC adapters.

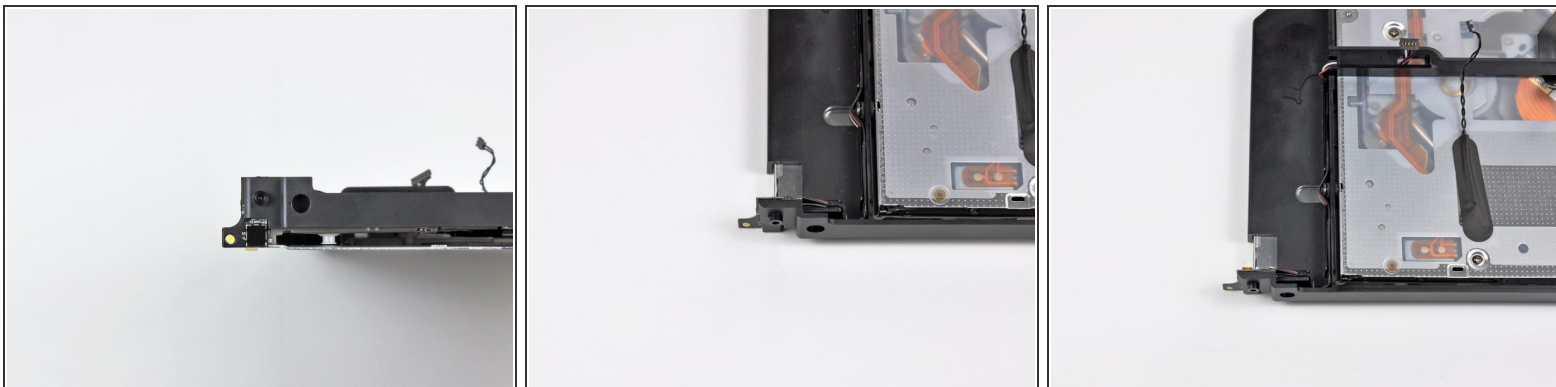
⚠ Holy capacitors! Fingertips beware.

## 步骤 23



- The optical drive bay drive simply slides out of the aluminum unibody housing.
- Well what do we have here? Is this a new optical drive? Why yes it is!
  - Hitachi-LG Data Storage (HLDS) Super Multi DVD Rewriter model GA32N
- The optical drive is 12.5 mm thick, giving everyone a glimmer of hope for a sweet Blu Ray installation...

## 步骤 24



 Due to popular demand, we've added photos of the IR sensor/receiver.

- The IR sensor/receiver is located on the optical drive near the top right edge.

## 步骤 25



- The remainders of the Mac Mini Mid 2010.
- Macminicolo took apart the [server version](#) of the new Mini. Check it out if you want to see how Apple stashed the second hard drive.
- Thanks for following iFixit during this historic moment. Until next time!

To reassemble your device, follow these instructions in reverse order.