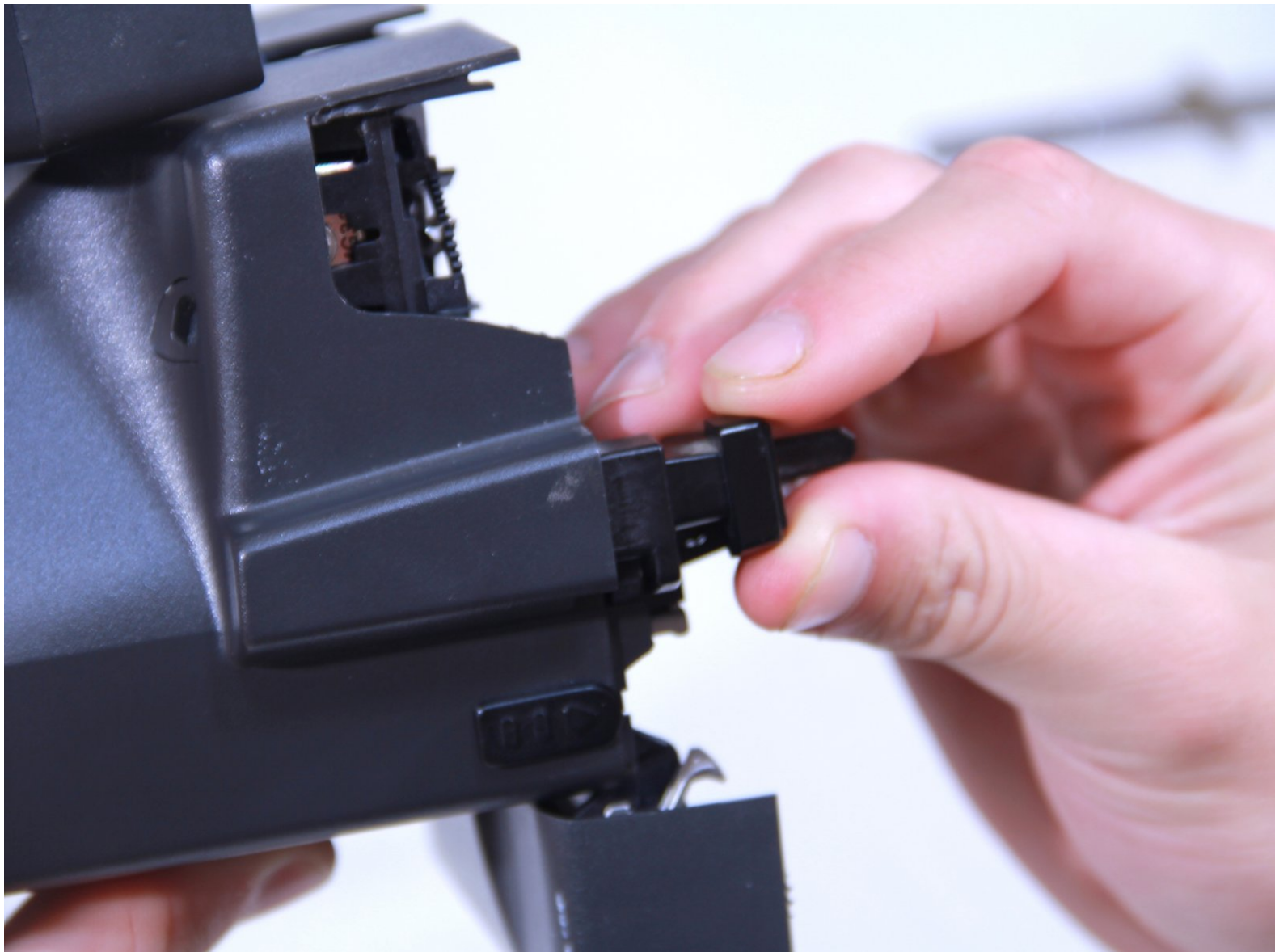




# Polaroid Onestep Close Up Shutter Switch Replacement

This guide will instruct you on replacing the shutter switch on your camera.

Written By: Tyler OBrien



---

## INTRODUCTION

The shutter switch is the button which is to be pressed when the user wants to capture an image. If for some reason this switch needs to be replaced, this guide will be showing how to remove the shutter switch.



### TOOLS:

- [iFixit Opening Tools](#) (1)
-

## Step 1 — Flash Assembly Removal



- Begin by opening the top of the camera (flash assembly) to a slight angle.
  - Next, angle the flash assembly slightly upward and pry off the connections carefully.
- ⚠ Be careful not to damage the ribbon cable. This is essential to the operation of the flash.

## Step 2 — Opening Film Tray



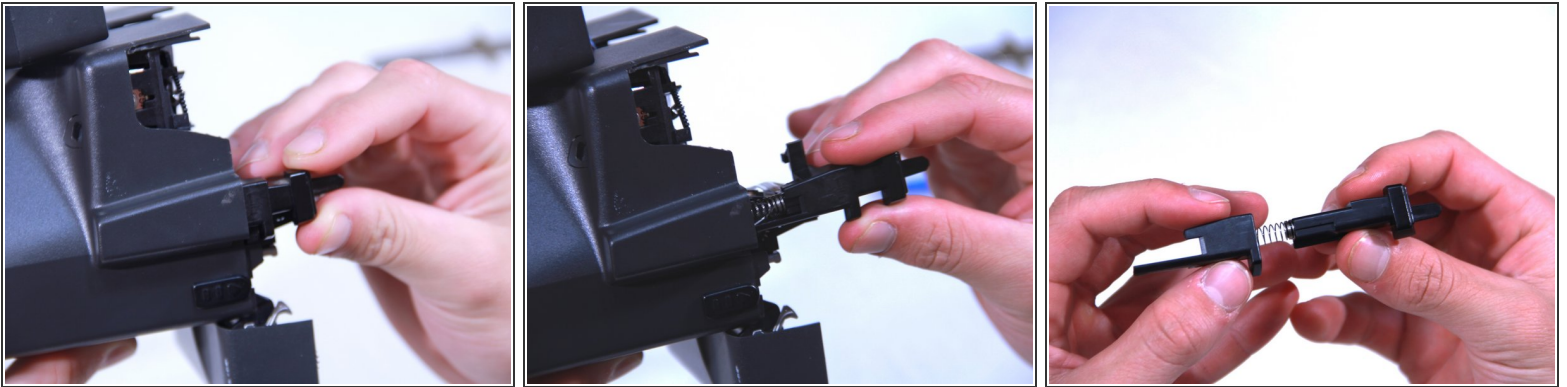
- Slide the action button, on the bottom of the camera, to open the bottom.

### Step 3 — Removing Face Plate



- Insert the blue plastic opening tool between the rear case and the plastic tabs directly under the shelf, and pry it loose.
- Pull off the face plate.

### Step 4 — Shutter Switch Removal



- After the face plate is off, the shutter switch should slide out easily.

To reassemble your device, follow these instructions in reverse order.