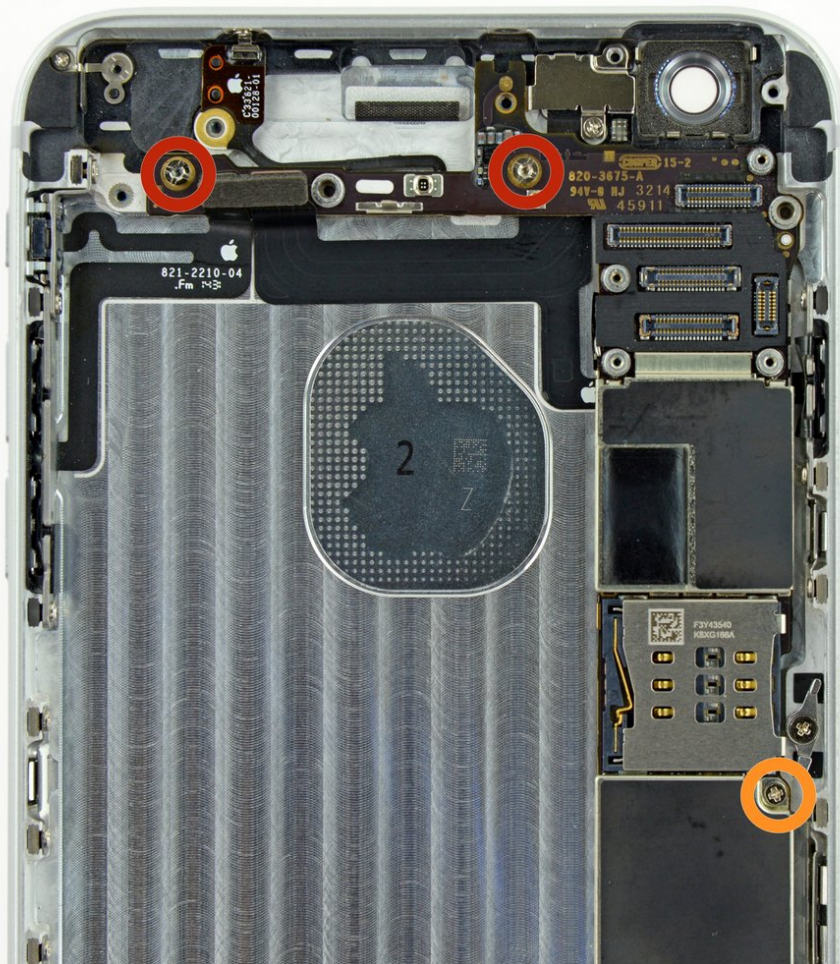




iPhone 6 Plus Logic Board Replacement

Prereq only, battery removed.

Written By: Walter Galan



INTRODUCTION

Prereq only, battery removed.

TOOLS:

- [Phillips #000 Screwdriver](#) (1)
- [Spudger](#) (1)
- [Flathead 3/32" or 2.5 mm Screwdriver](#) (1)

Pro

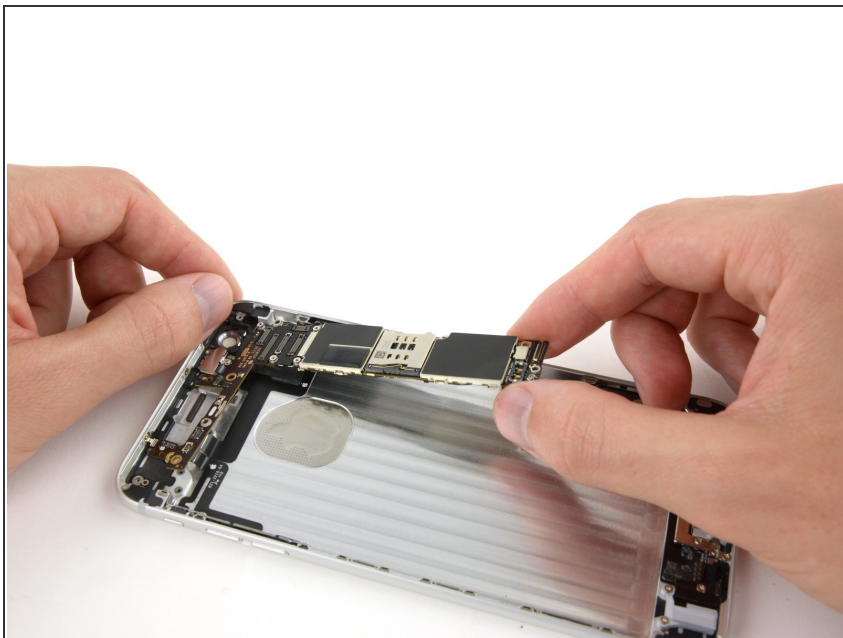
- [iPhone Standoff Screwdriver Bit](#) (1)
-

Step 1 — Logic Board



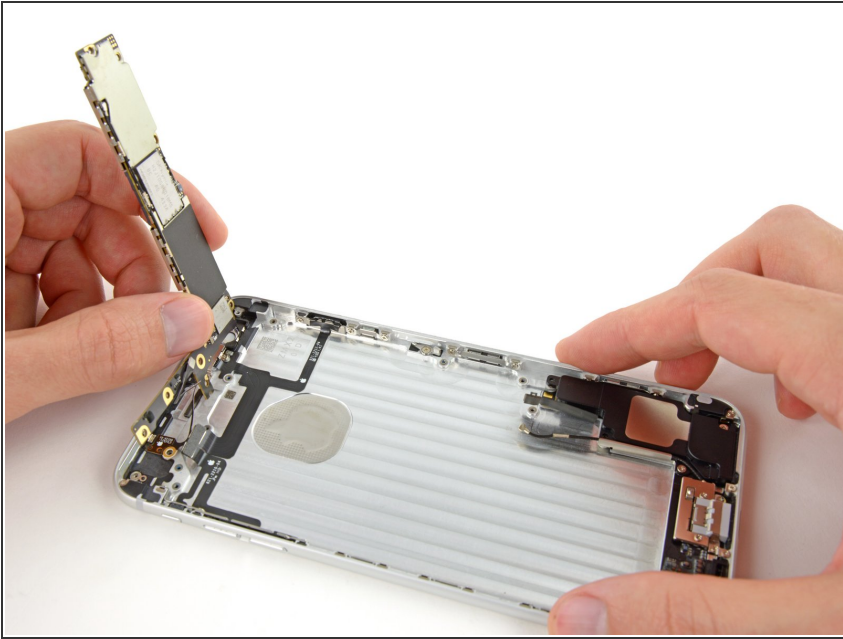
- Remove the following screws securing the logic board to the rear case:
 - Two 2.4 mm standoff screws
 - ⓘ Standoff screws are best removed using an [iPhone Standoff Screwdriver Bit](#) and [driver handle](#).
 - ⚠ In a pinch, a small flathead screwdriver will do the job—but use extra caution to ensure it doesn't slip and damage surrounding components.
 - One 2.1 mm Phillips #00 screw

Step 2



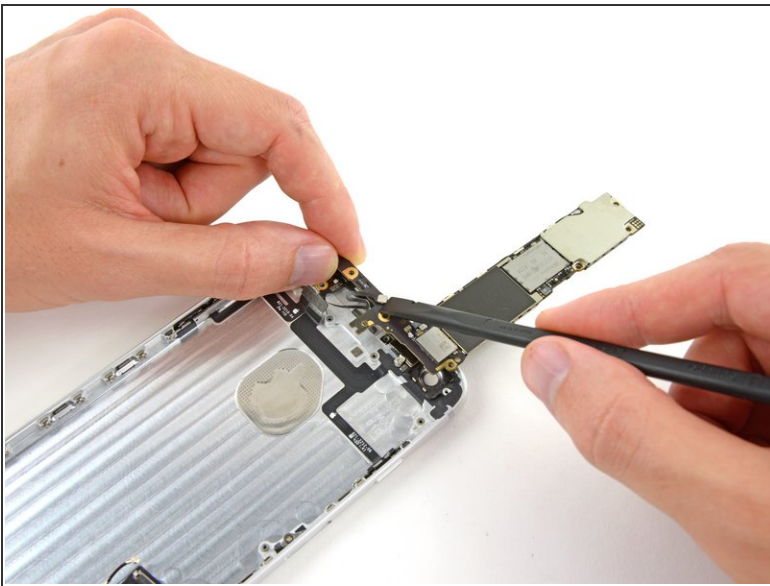
- Carefully raise—but do **not** remove—the logic board, lifting it from the bottom edge nearest the Lightning connector.

Step 3



- ⚠ Do **not** remove the logic board. At this point it is still tethered to the rear case via an antenna connector.
- Continue carefully lifting the bottom side of the logic board until it is vertical.

Step 4



- Gently lay the logic board upside-down, with the top portion resting against the rear case of the iPhone.
- Use the flat end of a spudger to disconnect the antenna connector from its socket on the back of the logic board.

Step 5



- Lift and remove the logic board out of the iPhone.

To reassemble your device, follow these instructions in reverse order.

This document was last generated on 2019-07-27 10:53:32 AM.