



Samsung Galaxy R SIM Card Replacement

This guide will show how to remove the SIM card from the phone.

Written By: Keon Horahan



INTRODUCTION

The SIM card is used for receiving and transmitting signals as well as holding contacts in memory. If you are unable to take or make calls, you may need a new SIM card. Removing the SIM card is as simple as removing the battery, and you can easily use your fingers to remove the card.

TOOLS:

- [iFixit Opening Tools](#) (1)
 - [Phillips #00 Screwdriver](#) (1)
-

Step 1 — Rear Case



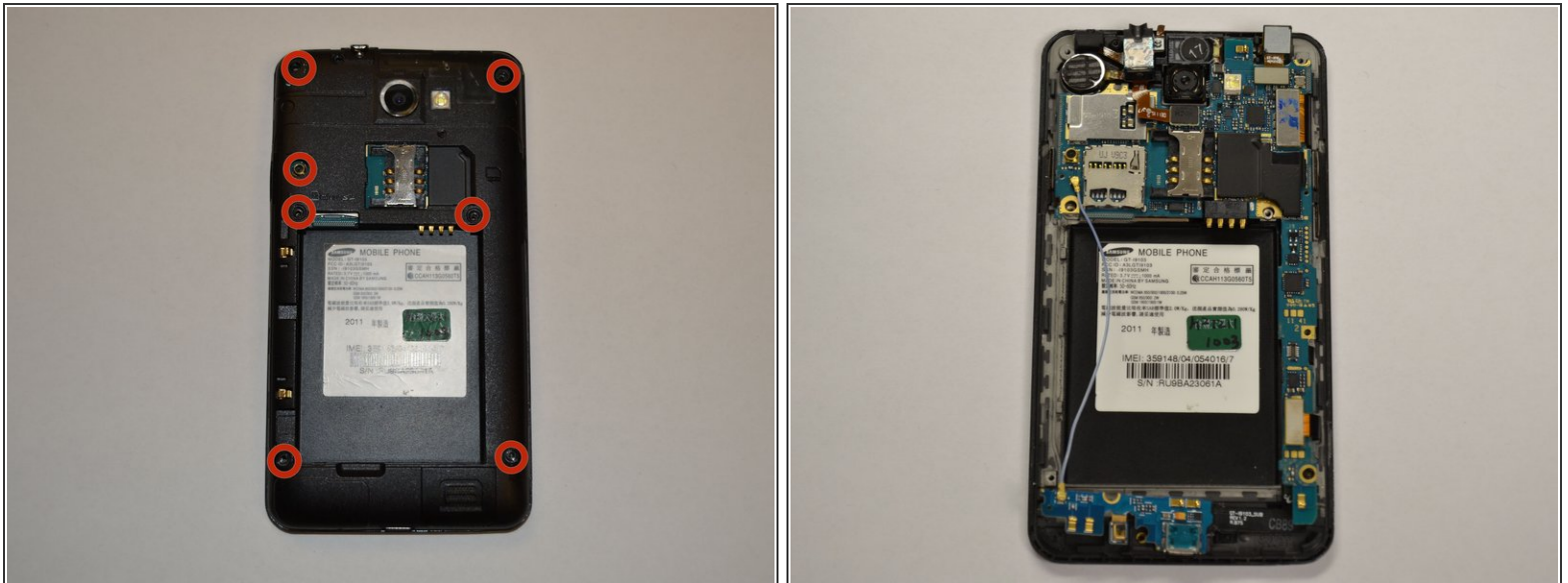
- Insert your fingernail or a plastic tool into the opening near the headphone jack on top of the phone.
- Gently pry apart the rear case from the midframe and remove.

Step 2 — Battery



- Insert your fingernail, or a plastic tool, into the crevice on the lower left side of the back side.
- Gently pry the battery from the back of the phone.

Step 3 — Remove screws



- With the Phillips head screwdriver, remove all seven 4.0 mm screws, highlighted in red, from the rear case.
- Carefully remove mid-frame from the front panel.

Step 4 — SIM Card



- Remove or replace SIM Card by pushing into metal slot above the battery holder.

To reassemble your device, follow these instructions in reverse order.