



Apple Universal Dock Model A1256 Teardown

A Teardown of the Apple Universal Dock

Written By: Devilac



INTRODUCTION

A simple look into the Universal Dock

Need a flat nose screw driver 2.4mm

philip screw driver #1

TOOLS:

- [Metal Spudger](#) (1)
 - [Phillips #1 Screwdriver](#) (1)
-

Step 1 — Apple Universal Dock Model A1256 Teardown



- Pry along the edge of the bottom of the case. It will just pop out.

Step 2



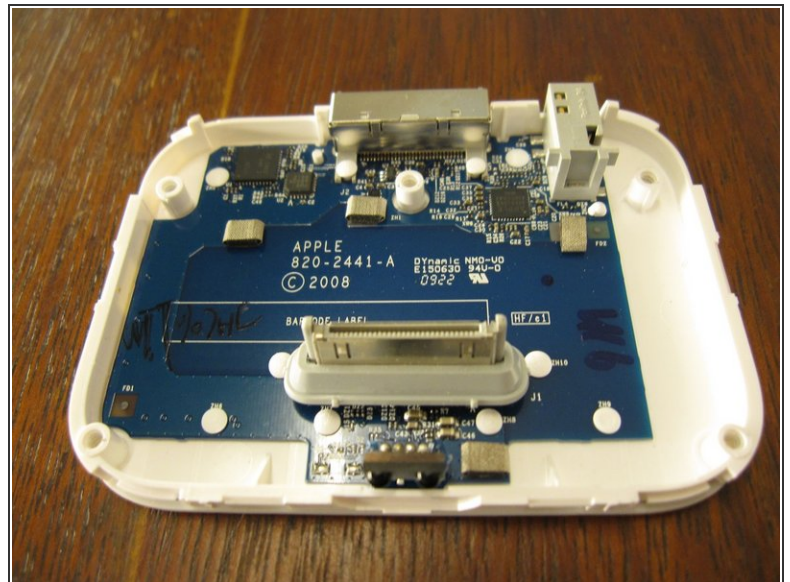
- Remove the top case from the bottom.

Step 3



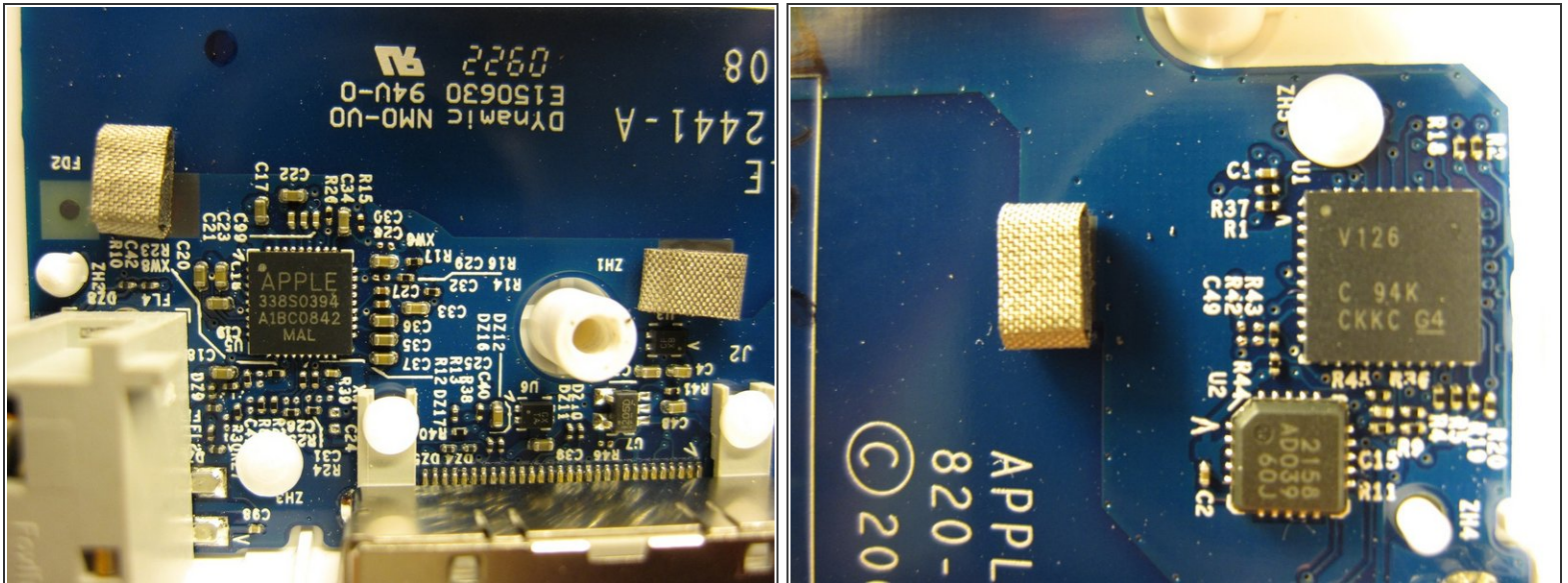
- There are five Phillips screws holding the metal brace down (In the picture I have already removed them).

Step 4



- The brace is glued in near the ir-sensor. You may have to apply a little bit force to remove it, but it will come out with just pulling. (You can pry it a little bit with a spudger or a screwdriver)

Step 5



- The only major chip located on the circuit board. (All those who have wondered about the dock's line out, I think we are clear now.)

To reassemble your device, follow these instructions in reverse order.

This document was last generated on 2019-07-11 12:18:40 PM.