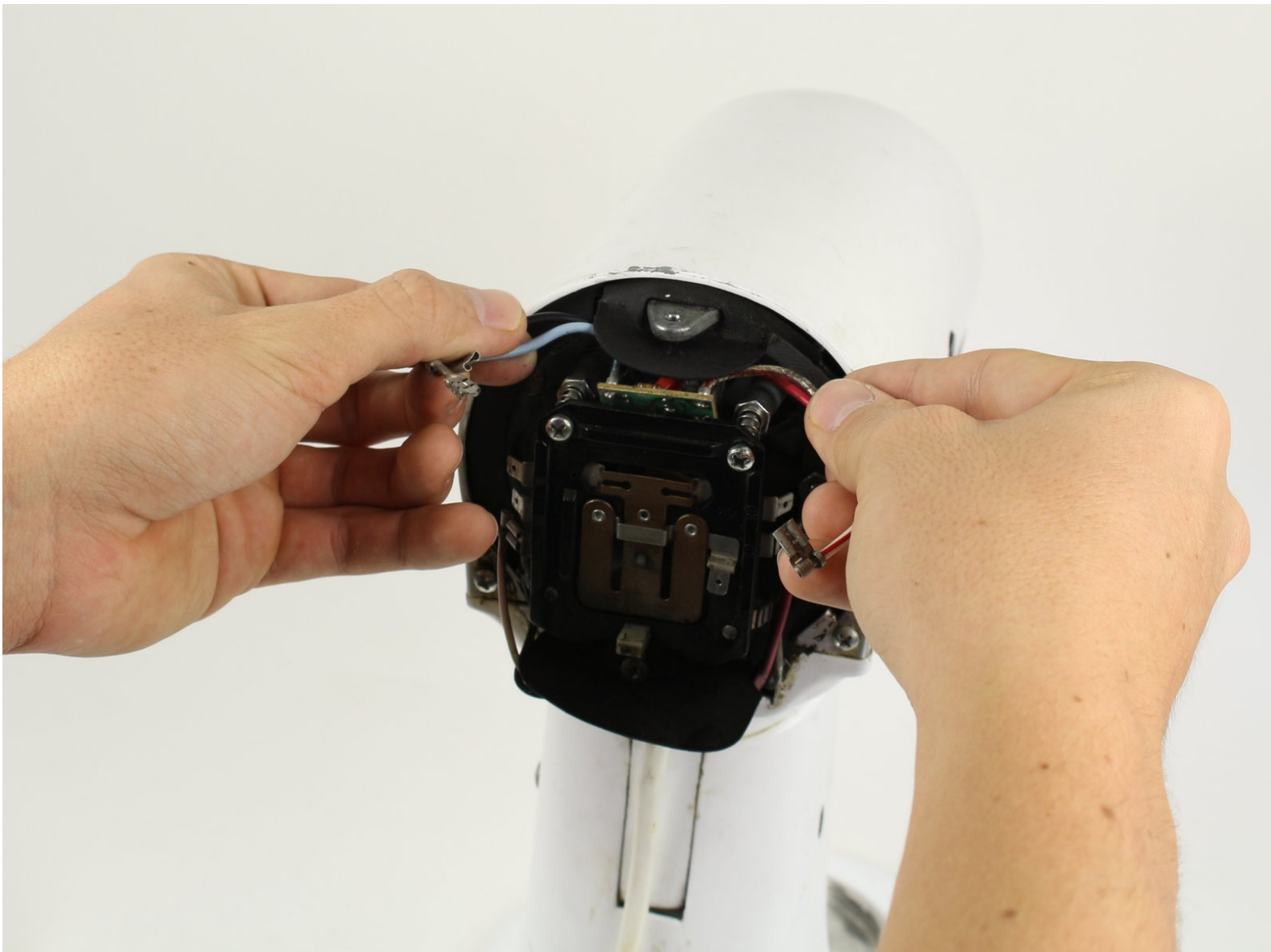




KitchenAid Classic Mixer K45SSWH Circuit Board Replacement

Replace your mixers circuit board (commonly referred to as phase board) to restore speed variation.

Written By: Chris Gonzales



INTRODUCTION

If your mixer is only working on certain speeds, you might need to replace your circuit board. Don't worry, follow this guide on how to replace the circuit board.

TOOLS:

- [Phillips #1 Screwdriver](#) (1)
 - [Phillips #2 Screwdriver](#) (1)
 - [Large Needle Nose Pliers](#) (1)
-

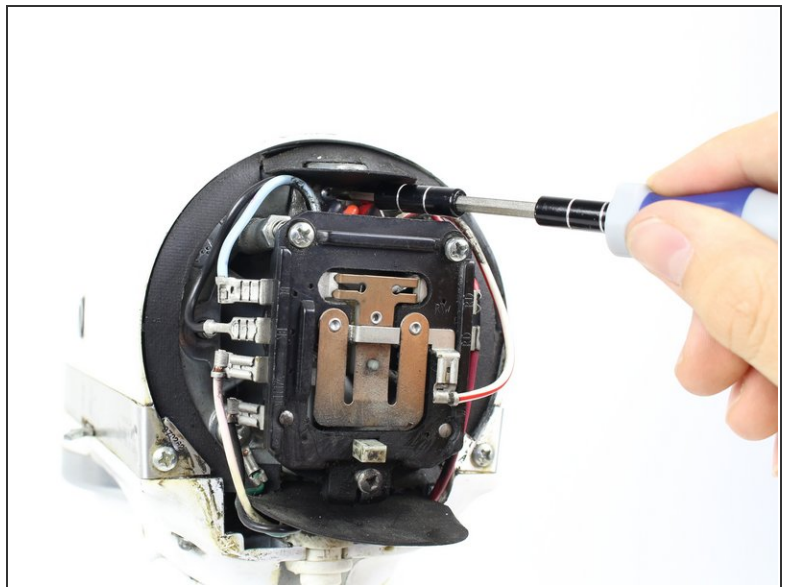
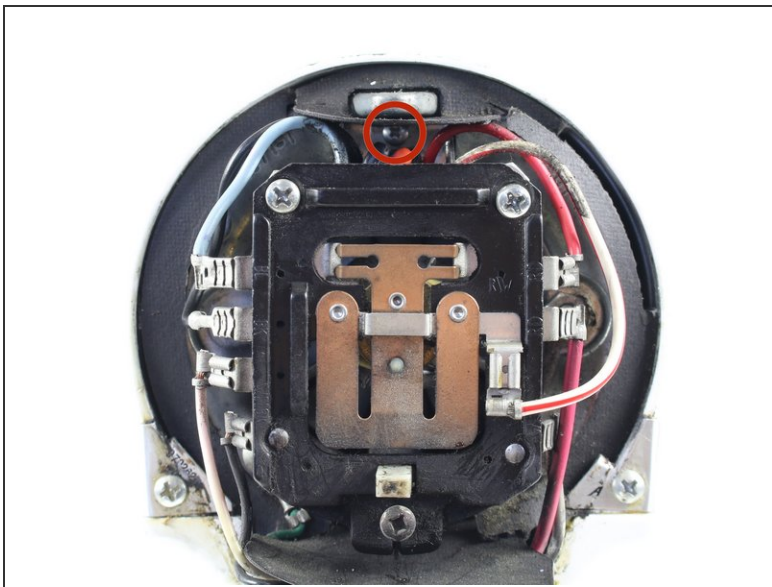
Step 1 — Remove Back Cover



- Using a phillips 2 screwdriver, remove the 10 mm screw from top of back cover.

i The rear cover is now completely free from the mixer.

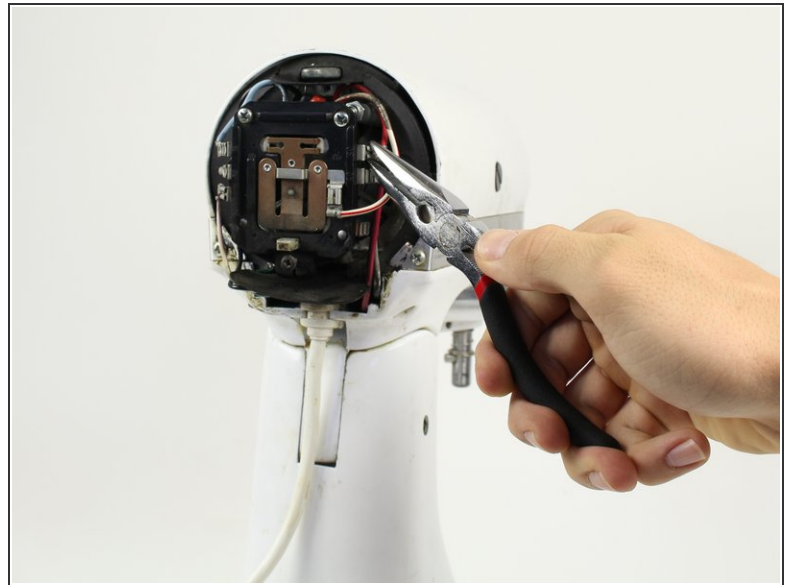
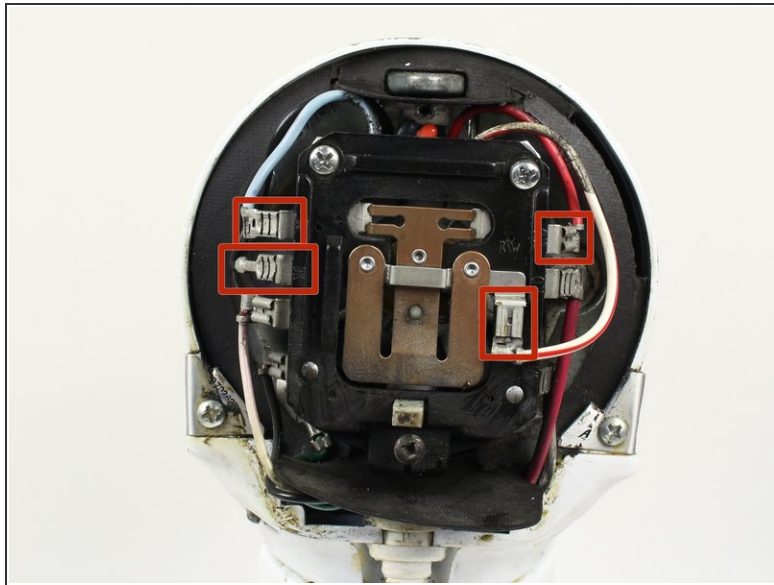
Step 2



- Using a phillips 1 screwdriver, remove the 9.5 mm screw holding the circuit board in place.

i The screw may be hidden underneath the seal.

Step 3 — Dislodge Connectors



- Using pliers, remove the connections for each of the four wires connecting to the circuit board.
- ⚠ Remember which color wire corresponds to which connection. Improper placement will not allow your mixer to turn on.

Step 4 — Remove Circuit Board



- Grab the four wires from the circuit board.
- Tilt the board back to remove it.
- If the board won't come out with some wiggling, you may need to loosen the two screws at the top of the control plate. Mark the top of the heads and loosen them 5 complete turns. You may need to loosen the locking nuts.

To reassemble your device, follow these instructions in reverse order.

This document was last generated on 2019-07-09 01:22:42 AM.