



# Dell Desktop XPS 420 CD/DVD Drive Replacement

How to remove or replace CD/DVD drives for the Dell Desktop XPS 420.

Written By: CrichtonMichael



---

## INTRODUCTION

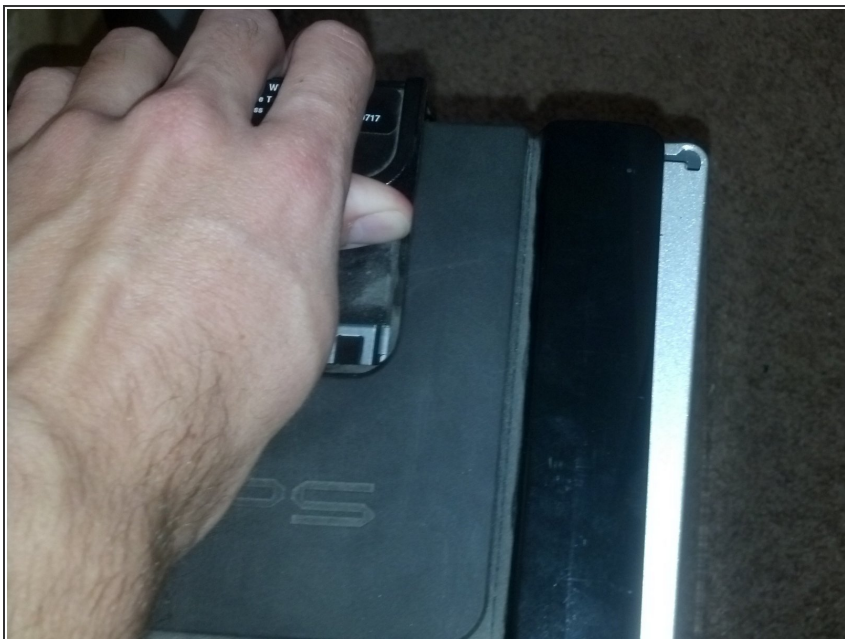
How to remove or replace CD/DVD drives for the Dell Desktop XPS 420.

---

### TOOLS:

- [Phillips #1 Screwdriver](#) (1)
-

## Step 1 — Stand the case upright, and remove the side panel.



- ⚠️ Ensure that your computer is unplugged. Also be sure you are grounded against static discharge
- Stand your case upright in an area with some space.
- Remove the side panel by pushing the release on the top of the case outwards. Once the side panel is released, remove it and set it aside.

## Step 2 — Remove the drive panel.



- ⚠️ Remove the power cable for the CD/DVD drive you wish to remove/replace, located on the rear of the drive.
- This is the drive release mechanism, adjacent to the drive panel and the drive bay.
- Release the drive panel by pulling down on the drive release mechanism.

This document was generated on 2019-09-16 02:43:09 PM (MST).

### Step 3 — Pull down on the drive release mechanism to release the drive.



- There is a single screw on the right-hand side of the drive that fits into the drive release mechanism.
- Simultaneously pull down on the drive release mechanism and pull the drive gently out of the drive bay.

### Step 4 — If you're adding a different drive, make sure it has screws in these places.



- If you wish to insert a different CD/DVD drive, make sure the screws are set in this orientation:
  - One screw on the right-hand side.
  - Two screws on the left-hand side.
- The screws will slide into these slits in the drive bay interior.

This document was generated on 2019-09-16 02:43:09 PM (MST).

To reassemble your device, follow these instructions in reverse order.