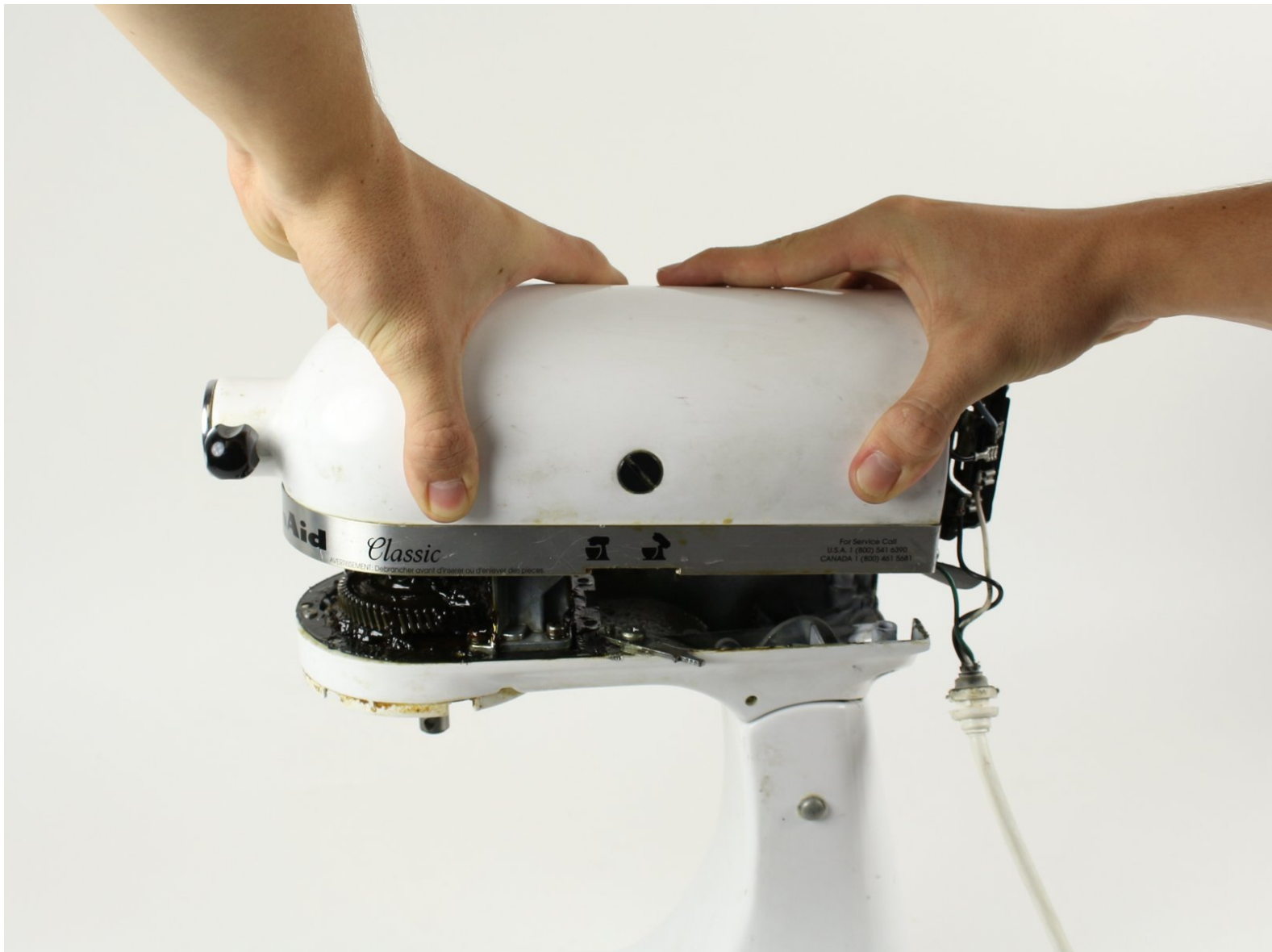




# Disassembling KitchenAid Classic Mixer K45SSWH Motor Housing Cover

Removing the motor housing cover is a prerequisite for many internal repairs and replacements on the KitchenAid Classic Mixer.

Written By: Chris Gonzales



This document was generated on 2020-11-28 03:38:20 AM (MST).

## INTRODUCTION

In this guide, you will learn how to disassemble the motor housing cover.

---

### TOOLS:

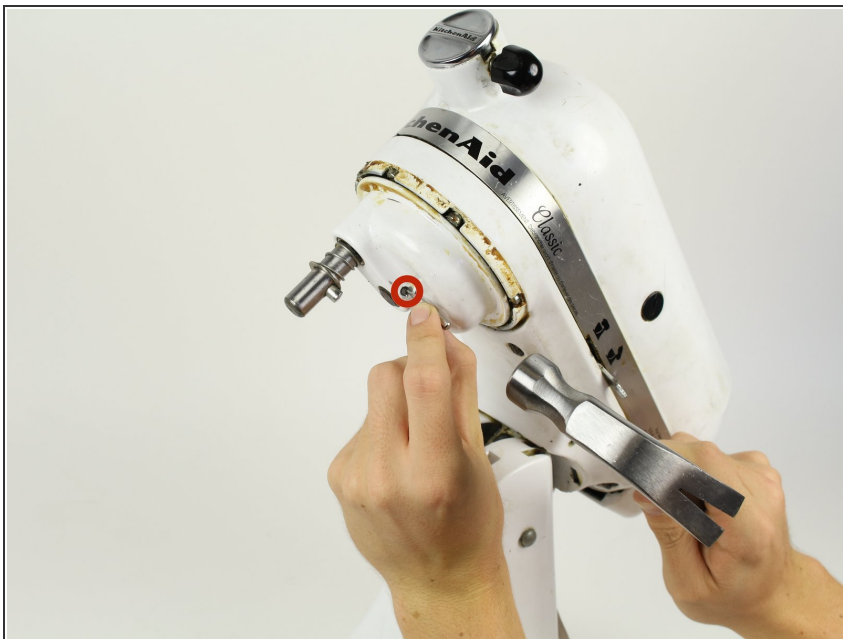
- [Phillips #2 Screwdriver](#) (1)
  - [Hammer](#) (1)
  - [Flathead Screwdriver](#) (1)
  - [Pin Punch](#) (1)
- 1 mm
- [Spudger](#) (1)
  - [Putty knife](#) (1)
-

## Step 1 — Motor Housing Cover



- Using a spudger, gently pry off the aluminum drip ring.

## Step 2



- Using a 4 mm pin punch and hammer, hammer the pin until it is dislodged from the planetary gear cover.

### Step 3



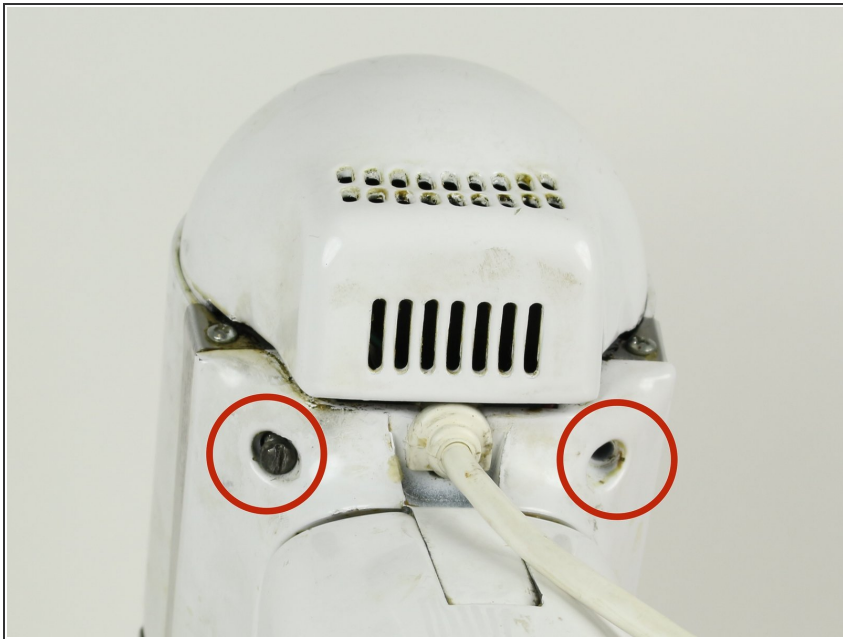
- Using a spudger, pry the planetary gear cover from the mixer shaft.

### Step 4



- Using a flathead screwdriver, remove the five 28 mm front motor housing screws.
- Using the same flathead screwdriver, remove the two 28 mm locking screws.
- ⚠ One of the locking screws contains a safety locking mechanism. Do not interchange these screws with the front motor housing screws.

## Step 5



- Turn your device around. Using the same flathead screwdriver, remove the two 28 mm rear locking screws.

⚠ One of the rear motor housing screws contains a safety locking mechanism. Do not interchange these screws with the front motor housing screws.

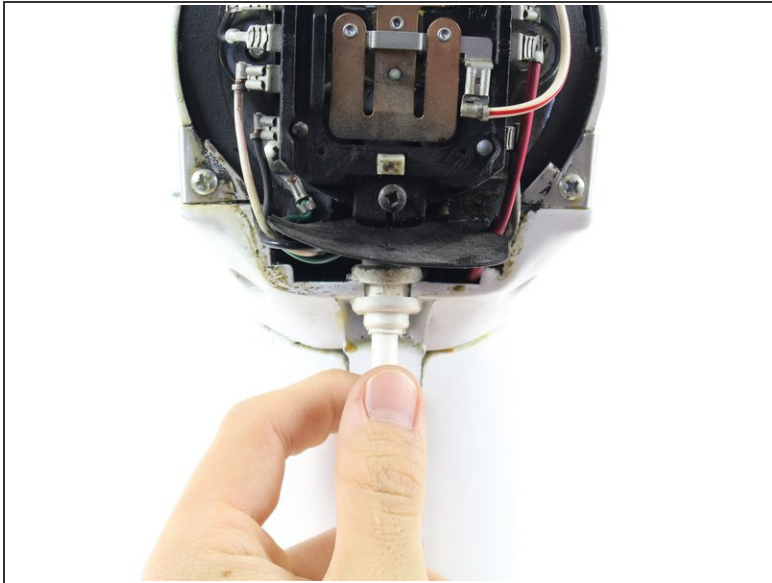
## Step 6



- Using a Phillips #2 screwdriver, remove the 10 mm screw from top of back cover.

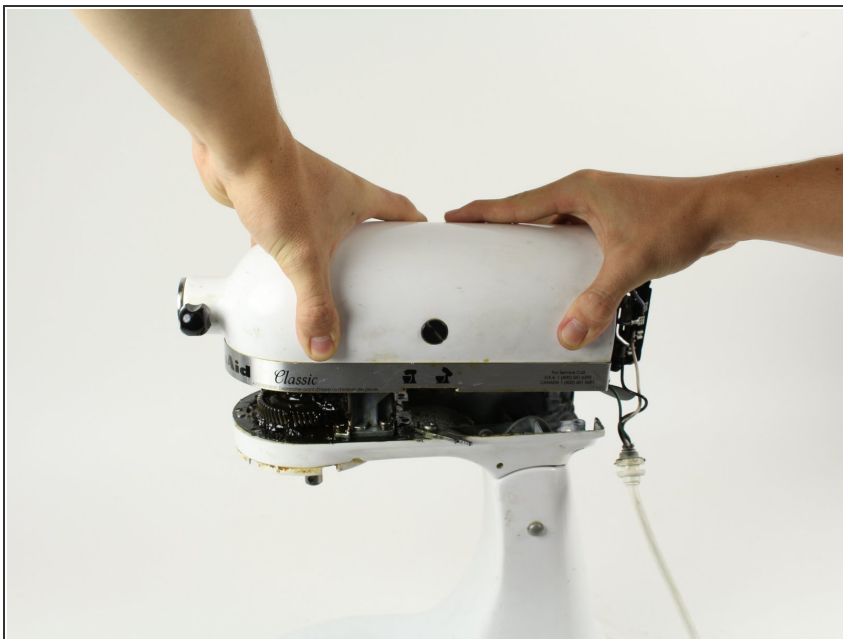
**i** The rear cover is now completely free from the mixer.

## Step 7



- Carefully pull the power cord from the notch in back of the mixer.
- ⓘ The motor housing cover is now completely free from the base of the mixer.

## Step 8



- Lift the motor housing cover from the mixer base.
- ⚠ Be sure to place the cover upside-down to prevent grease from leaking out.

To reassemble your device, follow these instructions in reverse order.