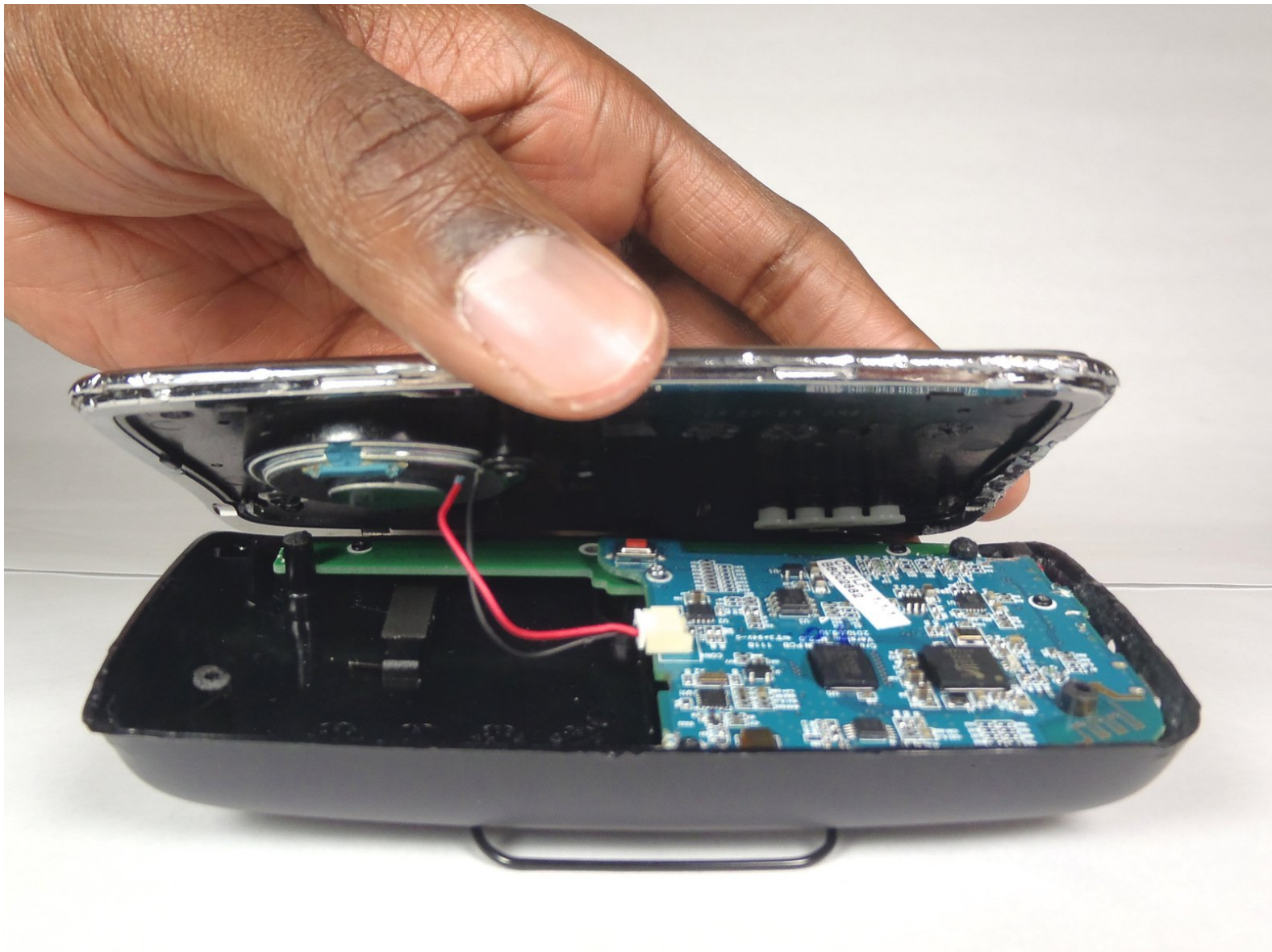




# Jabra CRUISER2 Front Plate Replacement

Follow this guide to remove the front plate from the device.

Written By: Spartacus



---

## INTRODUCTION

Removing the front plate will provide you access to other parts of the device that need repair.

---

### TOOLS:

- [iOpener](#) (1)
  - [iFixit Opening Tools](#) (1)
  - [Microwave](#) (1)
-

## Step 1 — Front Plate



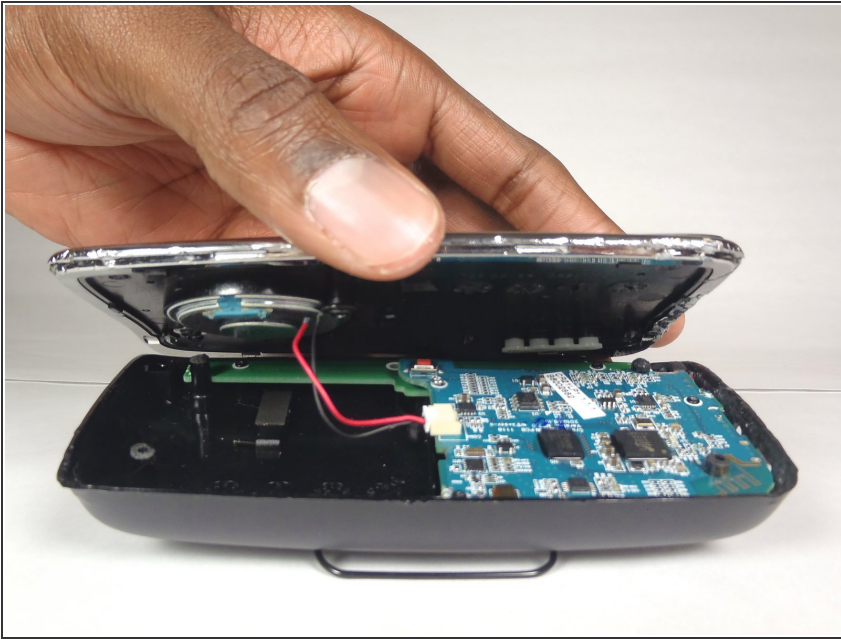
- Use the iOpener tool to unglue the adhesive of the device. The link to the iOpener instructions are listed below.
- [iOpener Instructions](#)

## Step 2



- Place the flat head of the bigger plastic opening tool in between the front plate and back plate.
- Pull the tool toward the back of the device to pry it open.
- Repeat this process over all edges of the device.

### Step 3



- Open up the device by pulling the front plate straight up from the back plate.

To reassemble your device, follow these instructions in reverse order.