



Dell Inspiron 15-3521 Hard Drive Replacement

This guide will show users how to replace their hard drive using the Dell Inspiron 15-3521 laptop model.

Written By: Andrew Dippre



**TOOLS:**

- [Phillips #0 Screwdriver \(1\)](#)

**PARTS:**

- [1 TB SSD / Upgrade Bundle \(1\)](#)
- [500 GB 5400 RPM 2.5" Hard Drive \(1\)](#)

Step 1 — Removing the Battery



⚠ We are removing the battery to avoid the possibility of an electrical discharge when working with this system.

- Flip the laptop over.
- Slide the latches toward the outside of the laptop to unlock the battery.
- Lift the battery out of the laptop.

Step 2 — Removing the Access Panel



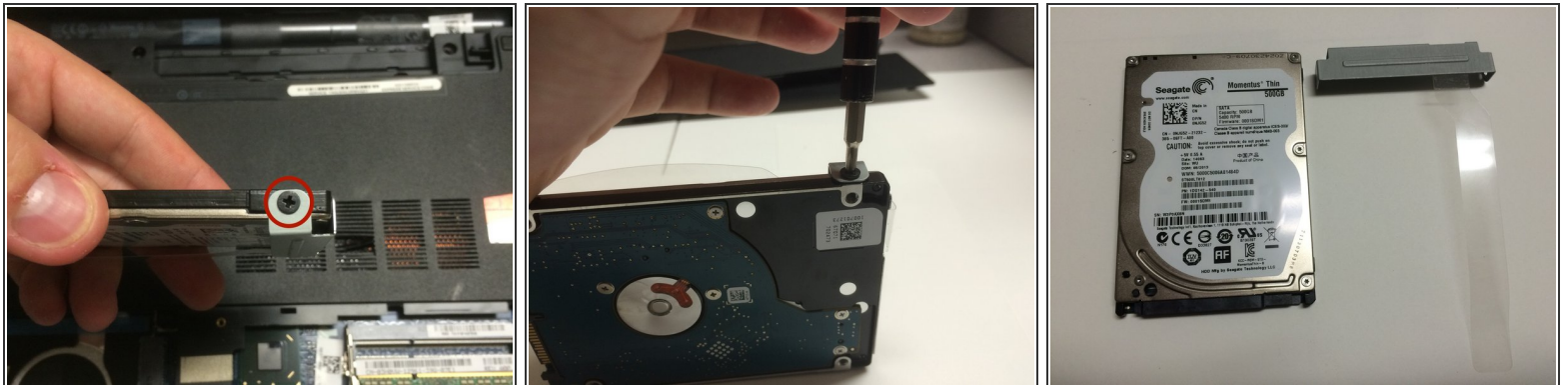
- Loosen the two screws attaching the access door to the laptop body.
- Using a spudger, pry open the access door from the laptop.
- Using your fingers, open and remove the access door from the laptop, exposing the memory cards underneath.

Step 3 — Remove the Hard Drive



- Locate the two hard drive screws, located on the left-hand side of the hard drive casing.
- Loosen and remove these screws using a phillips head screw driver PH0.
- Push the hard drive to the left, and then lift out of the laptop casing to remove from laptop.

Step 4 — Accessing Hard Drive



- Identify the Hard Drive caddy screws, one on each side of the hard drive casing.
- Remove these screws using a phillips head PH0 screwdriver.
- Now, with a new hard drive, attach the caddy/casing using the same screws removed from the old hard drive.

To reassemble your device, follow these instructions in reverse order.