



Canon PowerShot SD500 Digital ELPH Battery Replacement

This guide will show you how to remove and replace the battery in your Powershot SD500 Digital ELPH camera.

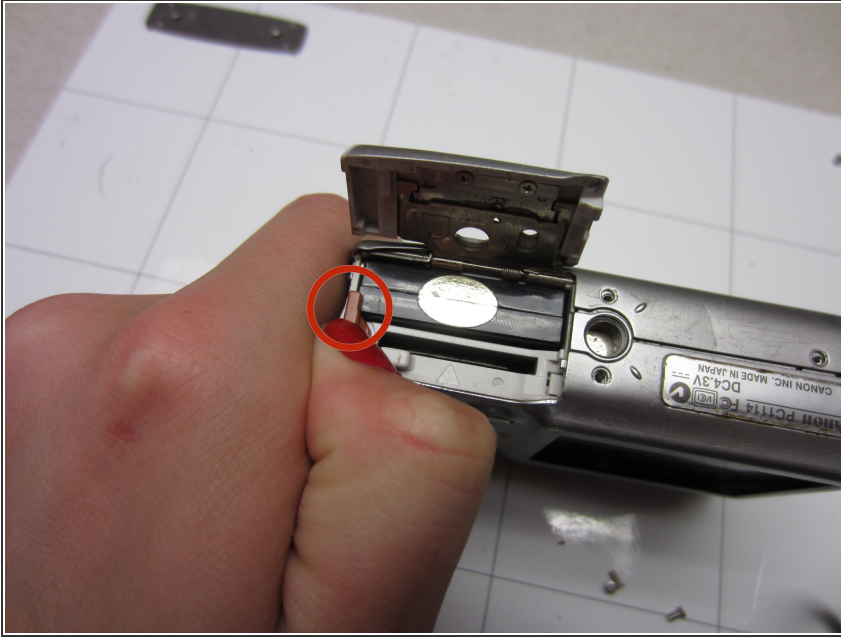
Written By: Taylor Shields



INTRODUCTION

Replacing the battery is a simple task, and should be the first thing you check if your camera is not turning on.

Step 1 — Battery



- Slide open the battery cover.
- Push the small orange tab to the side so the battery can be removed.

Step 2



- Slide the battery out of the battery compartment.

To reassemble your device, follow these instructions in reverse order.

This document was last generated on 2017-07-02 04:22:17 PM.

