



MacBook Pro 17" Models A1151 A1212 A1229 and A1261 Optical Drive Replacement

Written By: iRobot



INTRODUCTION

How to access the SuperDrive.



TOOLS:

- [Phillips #00 Screwdriver](#) (1)
- [Spudger](#) (1)
- [T6 Torx Screwdriver](#) (1)



PARTS:

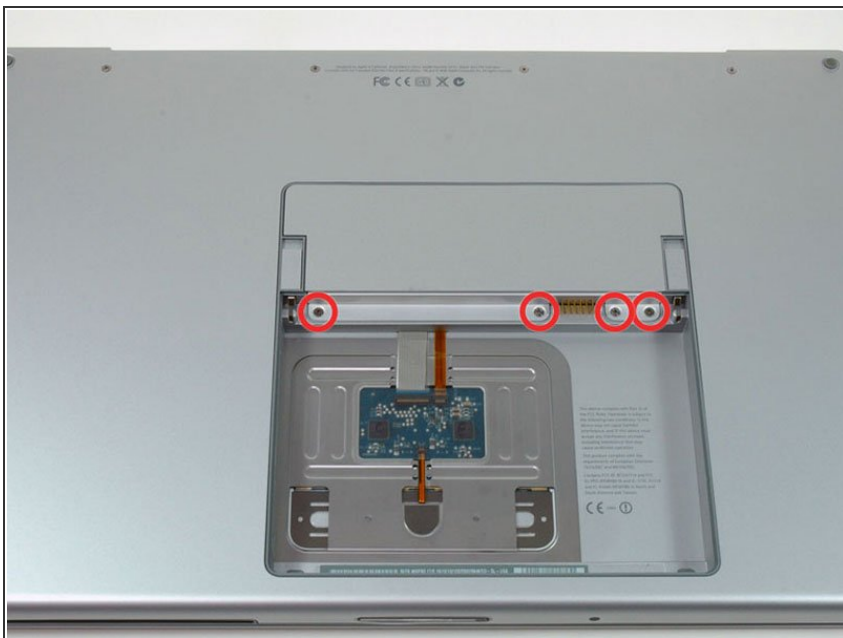
- [12.7 mm PATA 8x SuperDrive \(UJ-875\)](#)
(1)

Step 1 — Battery



- Use your fingers to push both battery release tabs away from the battery and lift the battery out of the computer.

Step 2 — RAM Shield



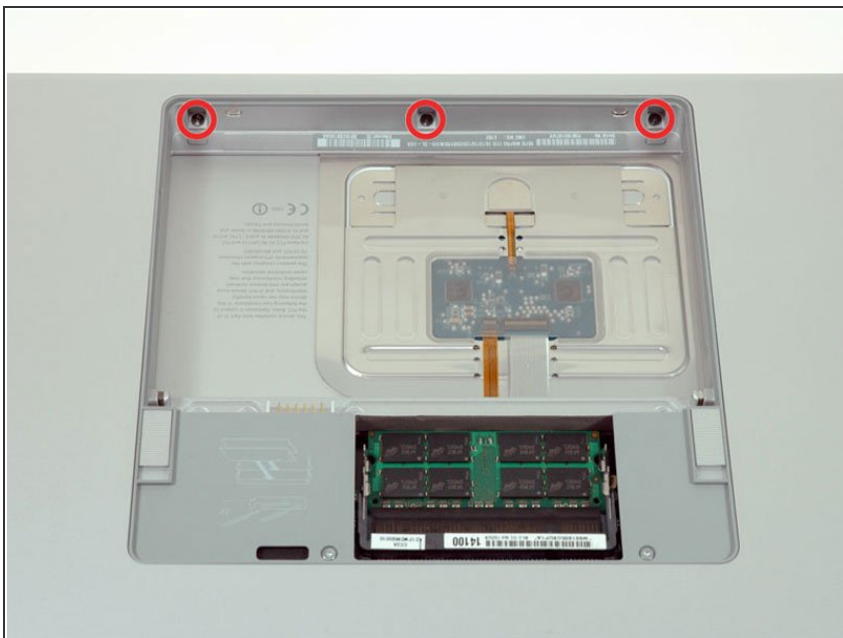
- Remove the four identical Phillips 3.4 mm screws from the memory door. These screws have 4 mm diameter heads rather than the 3 mm heads on the body screws.

Step 3



- Lift the memory door up enough to get a grip on it, and slide it toward you, pulling it away from the casing.

Step 4 — Upper Case



- Remove the three Phillips screws in the battery compartment near the latch. Apple was nice enough to tilt these screws at a slight angle to make them easier to remove. On the A1261 these screws have 4 mm diameter heads rather than the 3 mm heads on the body screws.

Step 5



- Remove the following six screws:
 - Two 14.5 mm T6 Torx screws on either side of the RAM slot.
 - Four 3.4 mm Phillips screws along the hinge.

Step 6



- Remove the four 3.4 mm Phillips screws on the port side of the computer.

Step 7



- Rotate the computer 90 degrees and remove the two Phillips screws from the rear of the computer.

Step 8



- Rotate the computer 90 degrees again and remove the four Phillips screws from the side of the computer.

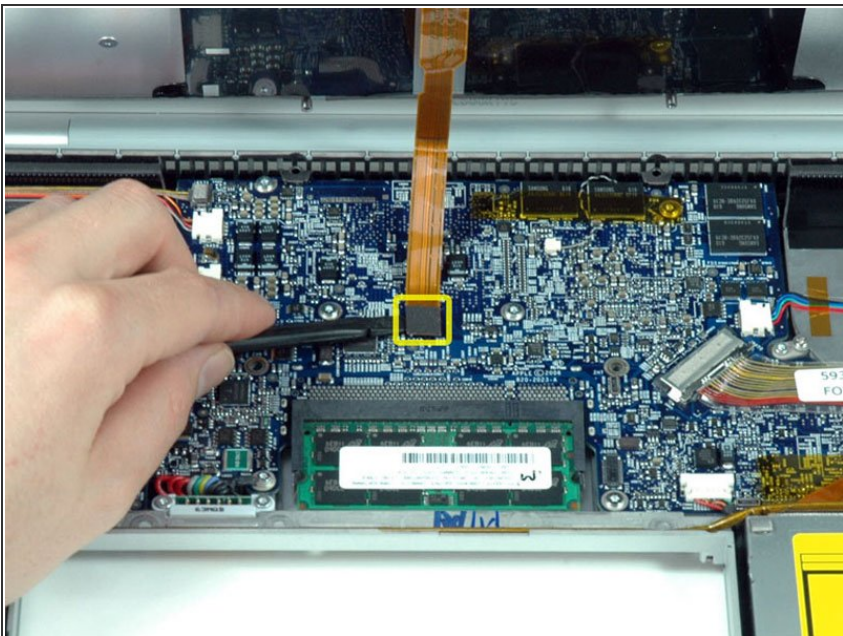
Step 9



⚠ Do not yank the upper case off quickly. The case is attached to the logic board via a ribbon cable.

- Lift up the back of the case and work your fingers along the sides, freeing the case as you go. Once you have freed the sides, you may need to rock the case up and down to free the front of the upper case.

Step 10



- Disconnect the trackpad and keyboard ribbon cable from the logic board.
- Remove the upper case.

Step 11 — Optical Drive



- Disconnect the orange SuperDrive ribbon cable from the logic board, removing tape as necessary.

Step 12



- Remove the following three screws:
 - Two black 4 mm T6 Torx screws on either side of the SuperDrive.
 - One 8.7 mm silver (black in some models) T6 Torx screw at the back of the drive near the speaker.

Step 13



- Use one hand to pull back the speaker cable and use your other hand to lift the optical drive up and out of the computer.
- ⓘ If you have a CD or any other object jammed in your optical drive, we have an [optical drive repair guide](#).

To reassemble your device, follow these instructions in reverse order.

This document was last generated on 2019-07-17 12:21:59 AM.