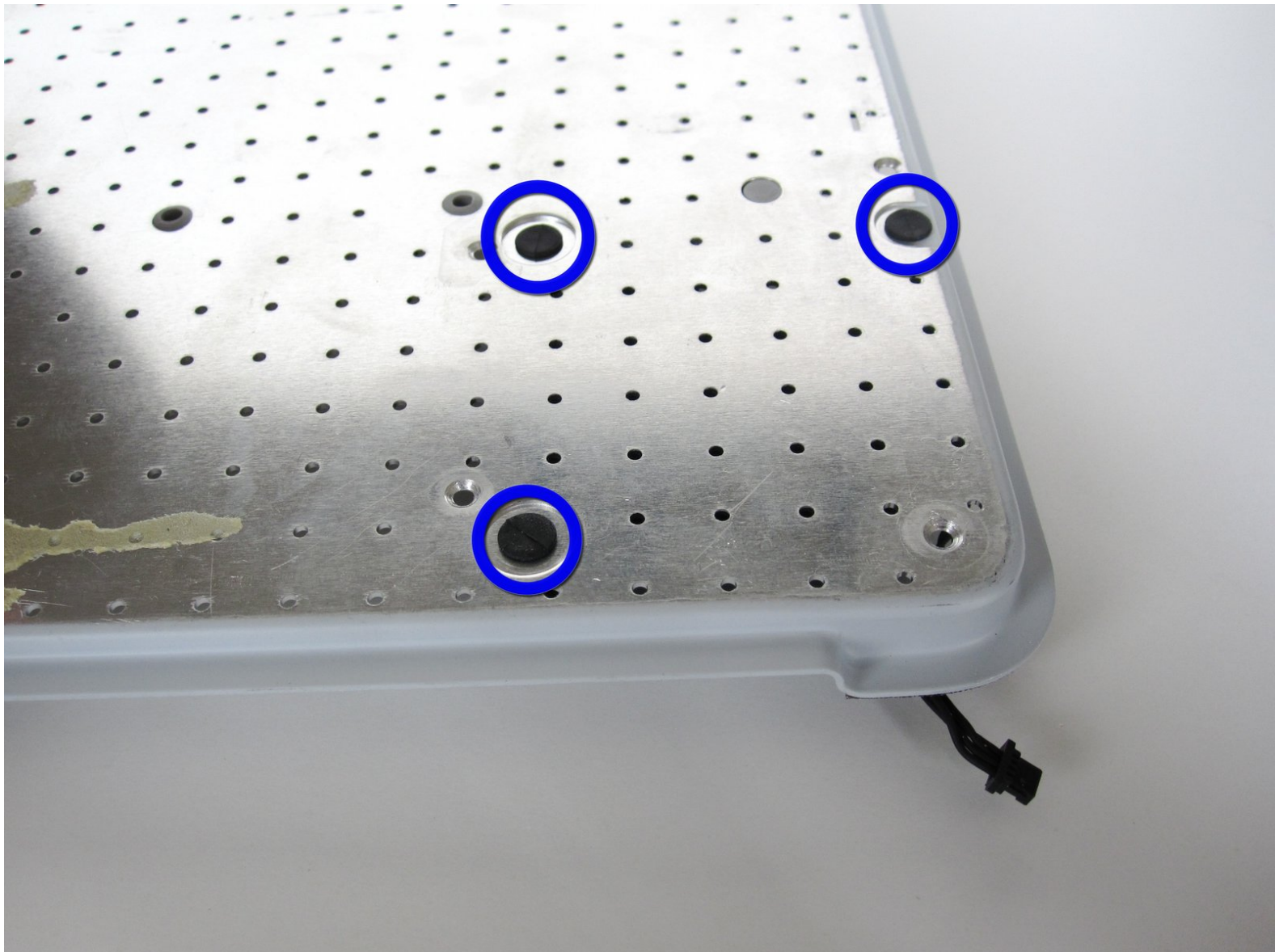




# Apple Time Capsule Model A1302 Fan Replacement

Learn how to replace the fan in your Apple Time Capsule Model A1302.

Written By: rousp



## INTRODUCTION

You are now going to:

1. Open Your Time Capsule
2. Remove the fan
3. Install a new fan. Or re-install the old fan if you are like me, and do this for fun..



### TOOLS:

- [Heat Gun](#) (1)
- [Phillips #00 Screwdriver](#) (1)
- [Spudger](#) (1)



### PARTS:

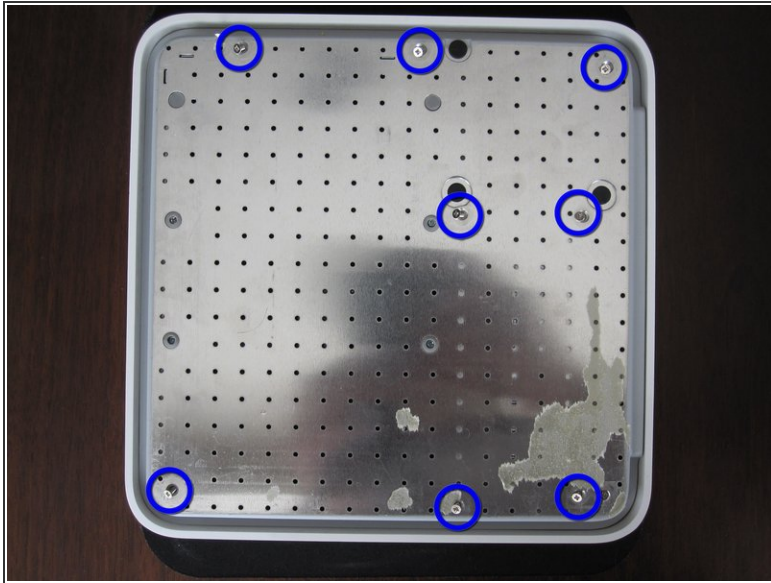
- [Apple Time Capsule Fan](#) (1)

## Step 1 — Remove the rubber base



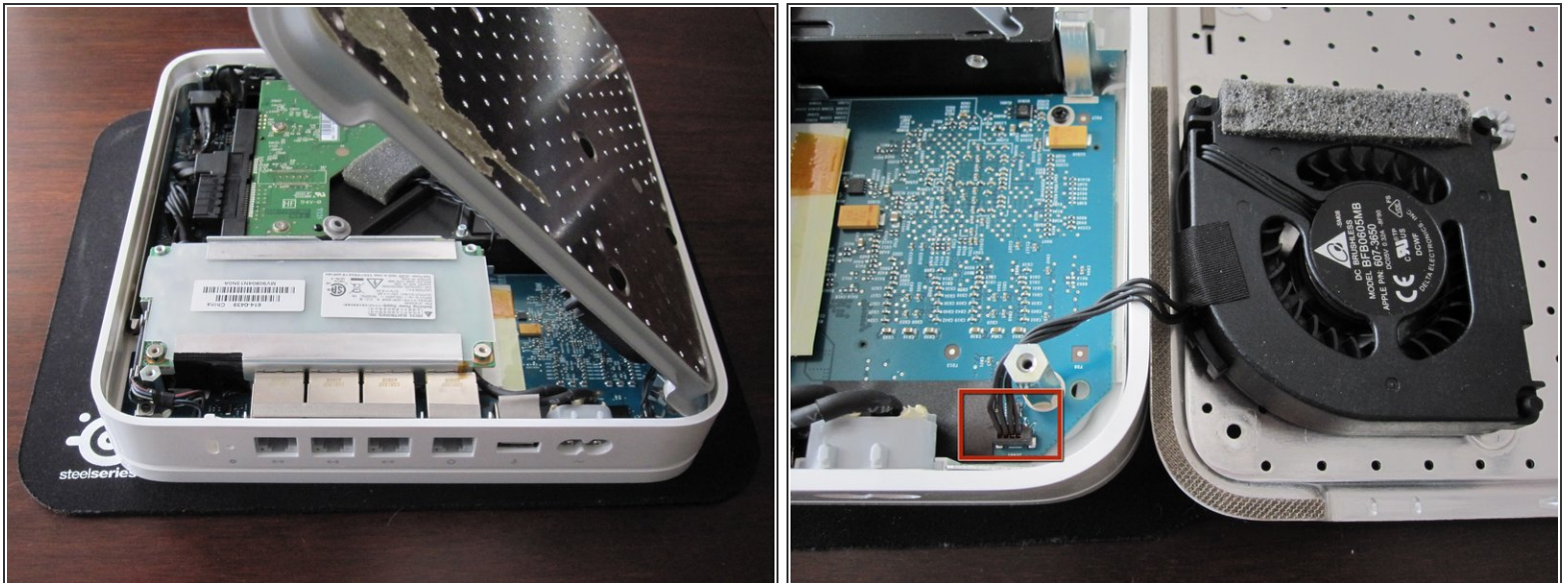
- i** Place a piece of cloth or a similar soft material on a clean, flat surface. Place the device upside down on top of the fabric.
- Open the Time Capsule by exposing the screws that hold the device together. The screws are concealed by the rubber base, which is the bottom surface of the device.
  - Use a heat gun or hair dryer to heat the rubber base, which softens the adhesive holding it on.
  - Starting in a corner, carefully lift the rubber base to prevent tearing. You can use a guitar pick or a small, plastic ruler to help separate the rubber from the metal.
- !** Take your time to prevent tearing the adhesive. Ensure that you don't overheat the device.
- i** If you tear some of the adhesive, don't worry. The existing adhesive is more than enough to allow the rubber base to stick back onto the unit during reassembly.
- i** During reassembly, you can apply heat to the rubber base. This will enable the adhesive to flow and form a better bond with the device's metal casing.

## Step 2 — Remove the screws



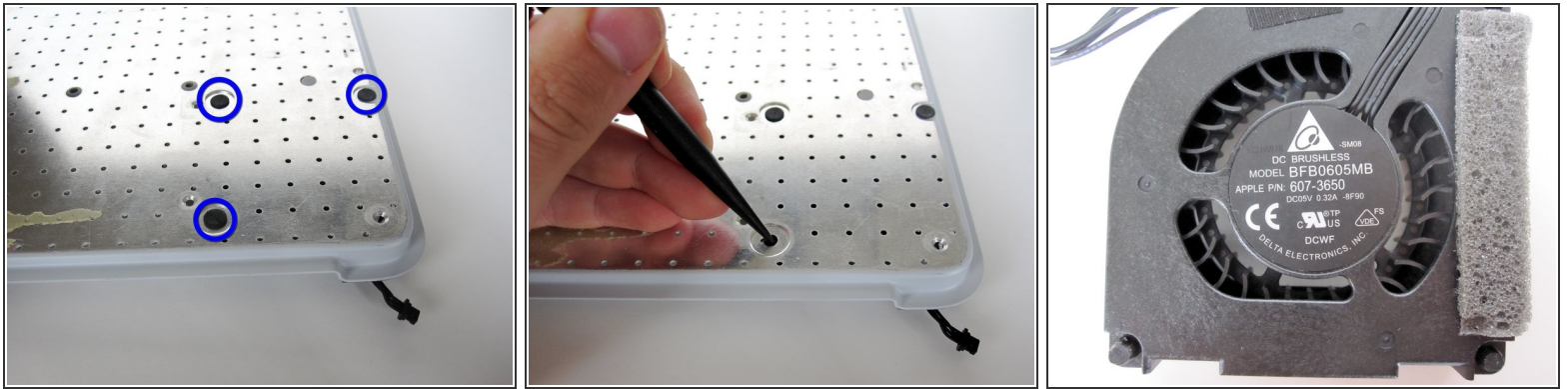
- Once the rubber base is separated from the device, remove the 8 Phillips PH00 screws that attach the metal bottom of the case to the plastic top of the case.
  - ☑ Use the Phillips #00 Screwdriver.
- ⓘ Some revisions of the Time Capsule have 10 screws. The A1254 revision has two screws in the upper right and lower left corners, as shown in the second image. In this situation, be sure to remove all 10 screws.

### Step 3 — Open the Time Capsule



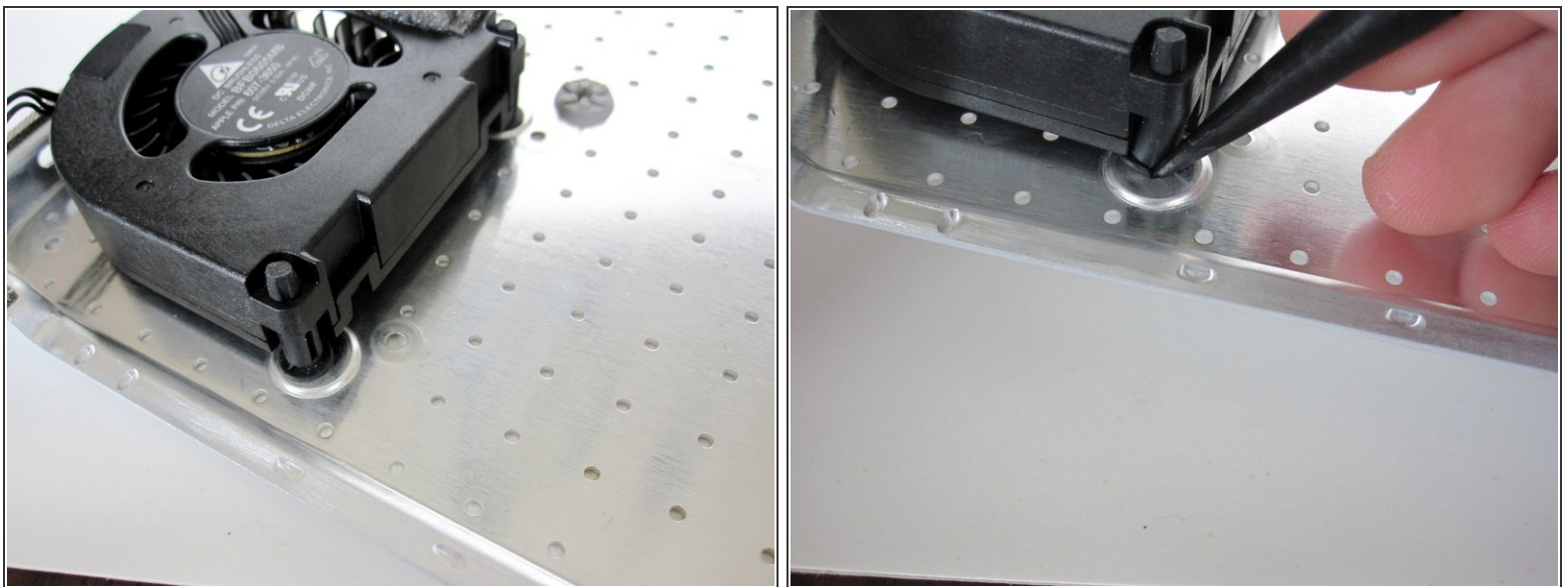
- ☞ Position the rear side of the device (the side with Ethernet connectors) so that it is facing you.
- Lift up the left side of the metal plate and slowly flip it over the right edge of the device.
- ⚠ To prevent damage, do not lift the metal plate straight up or use force. As shown in the second picture, the fan is attached to the metal plate and connected to the logic board next to the power connector.
- Since many people have had serious problems with the fan power connector breaking, it is advisable to NOT try to disconnect the fan power connector. Be VERY careful with this connector. It is extremely fragile. If you absolutely have to disconnect the fan from the logic board, VERY carefully use a spudger or tweezers to do so.

## Step 4 — Fan



- These three plastic plugs hold the fan in place.
- Use a plastic spudger or similar and press the plugs through the case to release the fan.

## Step 5



- To re-seat your fan use a spudger or similar to force the plastic plugs back in the way they came out. This can be fiddly, but after a few tries you master it.
- ⓘ If you are replacing your fan, make sure that the plastic plugs are included. Or be prepared to re-seat your fan using an alternative method like double sided tape or nuts and bolts.

To reassemble your device, follow these instructions in reverse order.