



CM Storm QuickFire Rapid LED Light Replacement

LED backlights can provide an aesthetically pleasing touch to your keyboard. This guide will show you how to replace them if they ever go out.

Written By: Andrew



INTRODUCTION

This guide will go over how to replace an LED on your CM Storm Quickfire Rapid keyboard.



TOOLS:

- [Keycap Removal Tool](#) (1)
- [iFixit Opening Tools](#) (1)
- [Phillips #0 Screwdriver](#) (1)
- [Soldering Iron](#) (1)
- [Desoldering Braid](#) (1)



PARTS:

- [LED](#) (1)

Step 1 — Removing Keycap



- Insert the keycap puller around the key with the defective LED and pull upward.

Step 2



- Using a Philips #0 screwdriver, remove the .5cm screw from the back of the keyboard.

⚠ This will void your warranty!

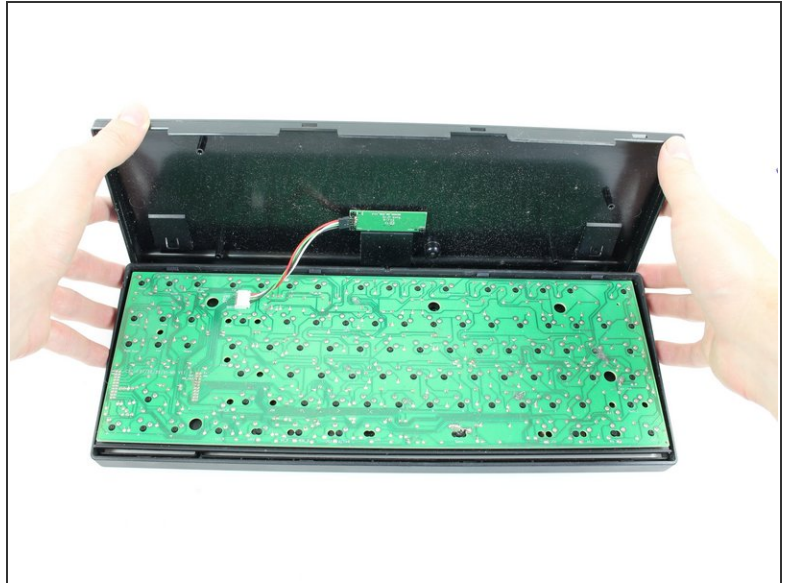
⚠ When inserting the screw after fixing the faulty LED, make sure to not screw in too tight. This may cause erratic behavior with the keyboard.

Step 3



- Wedge a plastic opening tool between the rear plate and rim of the keyboard and slide it through the circled areas to separate the plastic hooks that mount the rim to the rear plate.

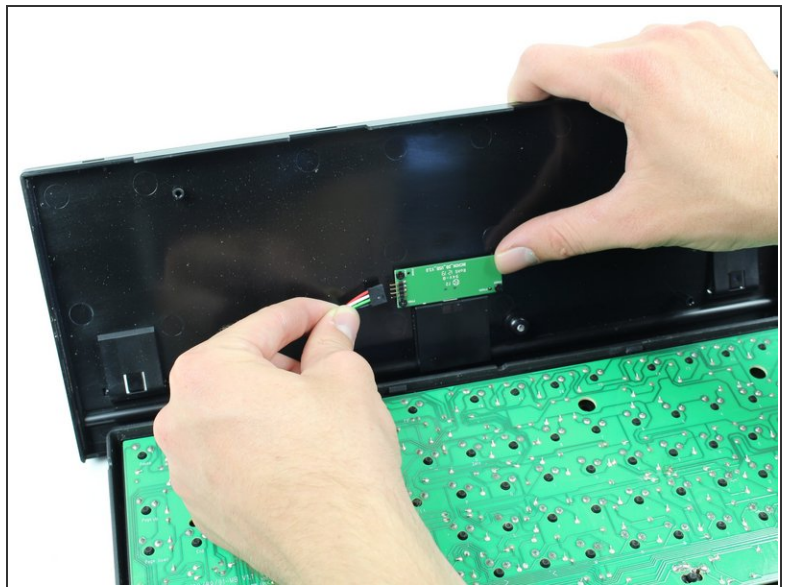
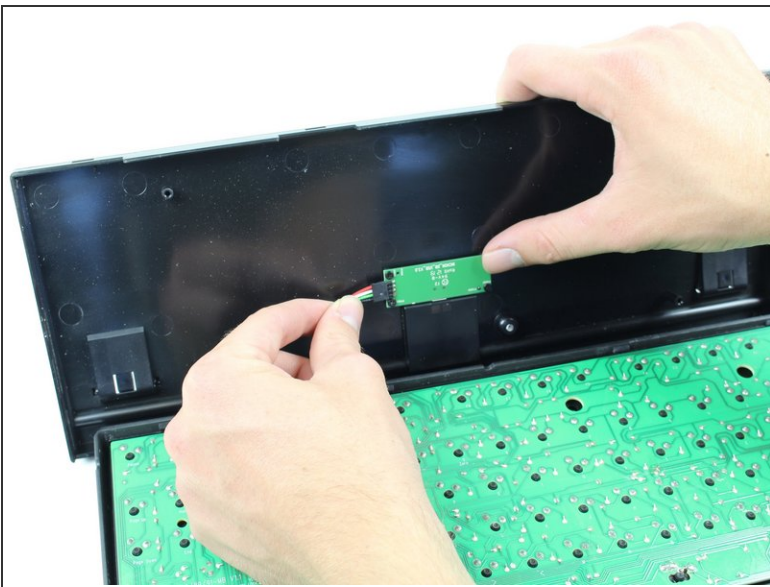
Step 4



- Firmly grasp the bottom panel of the keyboard and carefully detach it from the rest of the board.

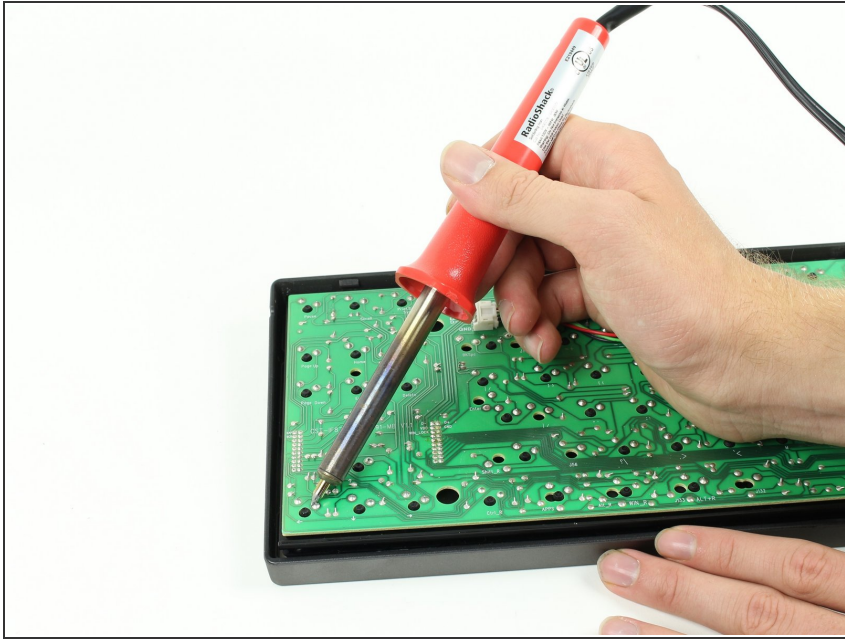
⚠ Do not put strain on the ribbon cable when lifting the bottom panel.

Step 5



- Detach the 4-pin cable from the bottom panel of the keyboard.

Step 6



- [Desolder](#) the joints holding the faulty LED and switch to the PCB.
- Slide the faulty LED out and replace it with the functional one.

To reassemble your device, follow these instructions in reverse order.