



# Samsung Galaxy Fame S6812i Camera Replacement

We are going to demonstrate how to open the case and replace the rear facing camera.

Written By: Charles



 **TOOLS:**

- [iFixit Opening Tools](#) (1)
  - [Tweezers](#) (1)
  - [Phillips #00 Screwdriver](#) (1)
-

## Step 1 — Remove the battery cover



- Turn the phone off and make sure your hands are clean. Use your thumb nail or a plastic spudger to pry open the back cover,

## Step 2 — Remove the battery



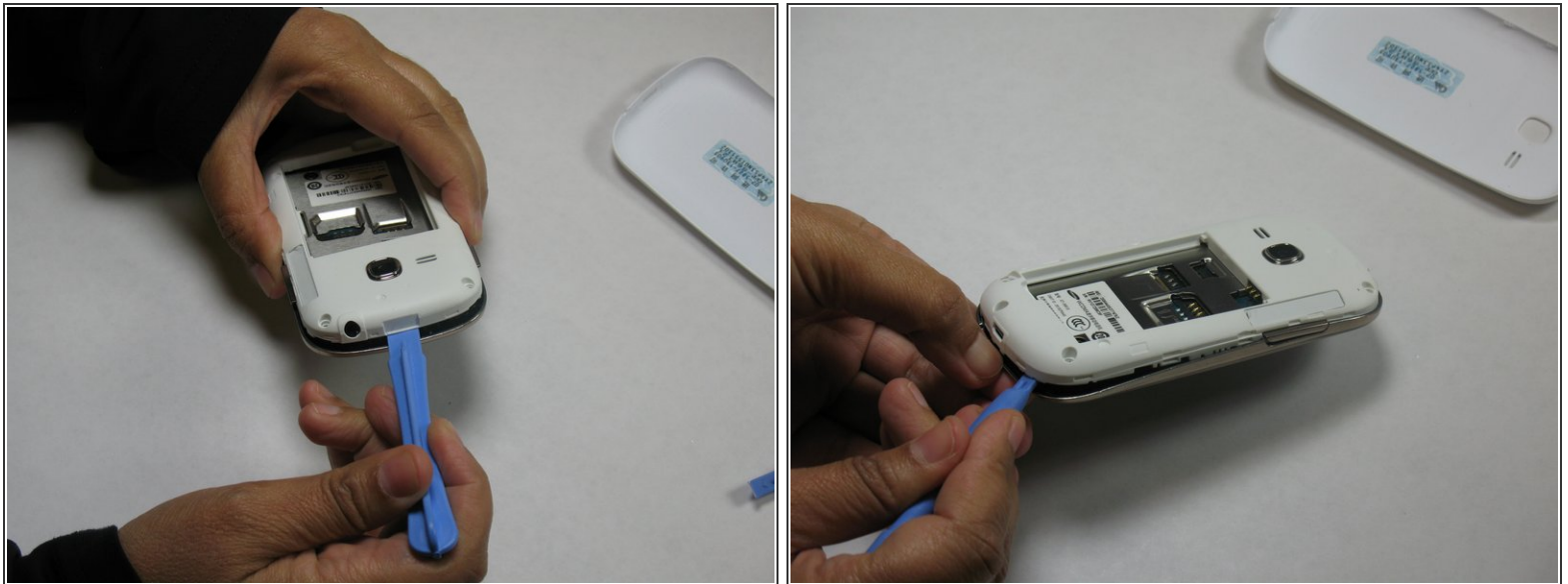
- Use the plastic opening tool or your thumb nail to lift the battery out of the receptacle.

### Step 3 — Removing screws and stickers



- Remove the five 4 mm screws with a Phillips#00 screwdriver.
- Make sure you remove the sticker hiding the screw on the left bottom corner.

### Step 4 — Removing the mid-frame.



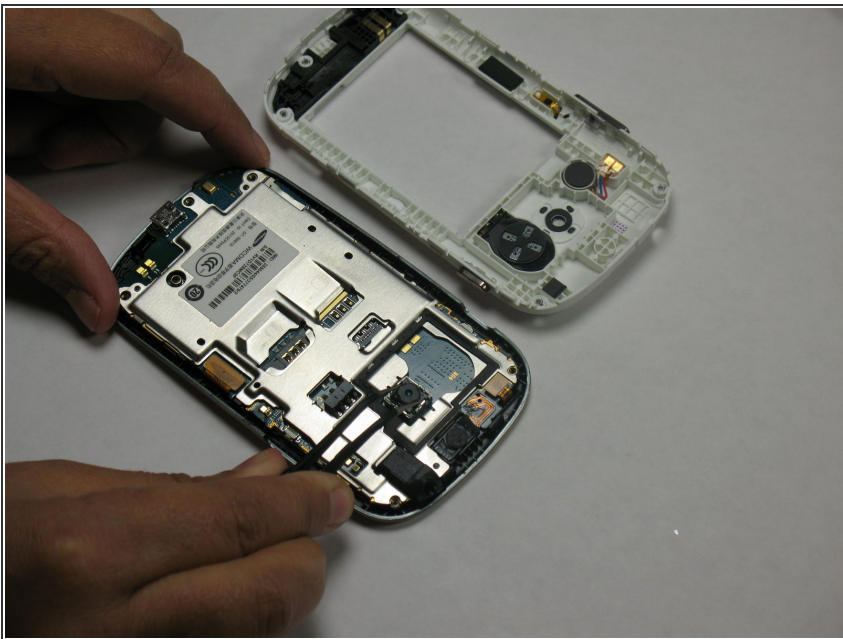
- Using the plastic opening tool pry into the bezel to remove the mid-frame
  - Continue moving the plastic opening tool around the mid-frame to separate it from the display assembly.
- ⚠** Be gentle the plastic mounting clips are very fragile. Pay extra attention when working around the volume button.

## Step 5



- After separating the two frames, you will have access to the camera

## Step 6



- ⚠ Pull the camera off the system by using the tweezers. Perform this step with caution.

To reassemble your device, follow these instructions in reverse order.