



Krups F203 Coffee Grinder Base Plate Replacement

This guide will instruct how to remove the base plate of the Krups F203 in order to access the parts inside.

Written By: Brian Wolfskill



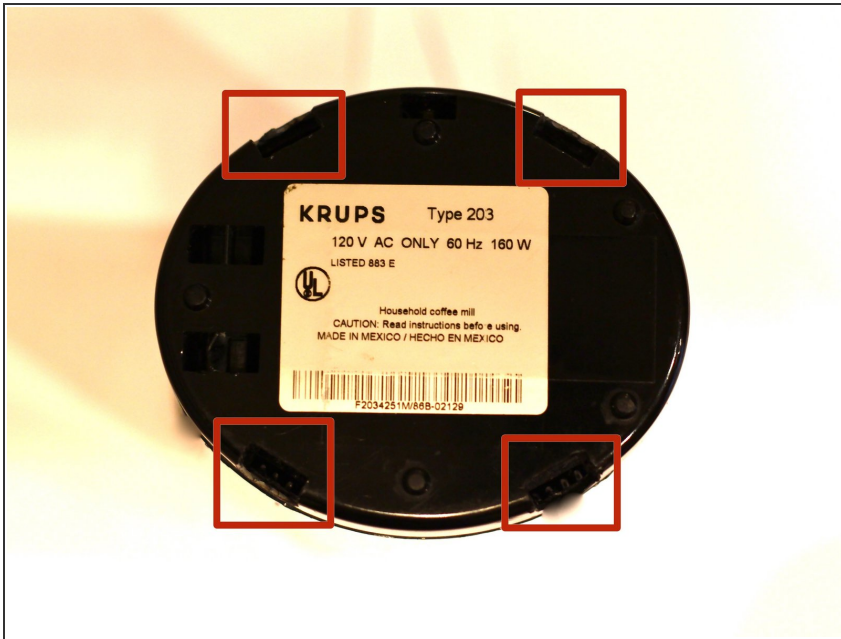
INTRODUCTION

The base plate of the Krups F203 is deceptively difficult to remove. In order to access the parts on the inside, it is necessary to remove the base plate.

TOOLS:

- [Spudger](#) (1)
-

Step 1 — Base Plate




- In each of the four rectangular slots on the bottom of the device, there is an E-shaped clip.

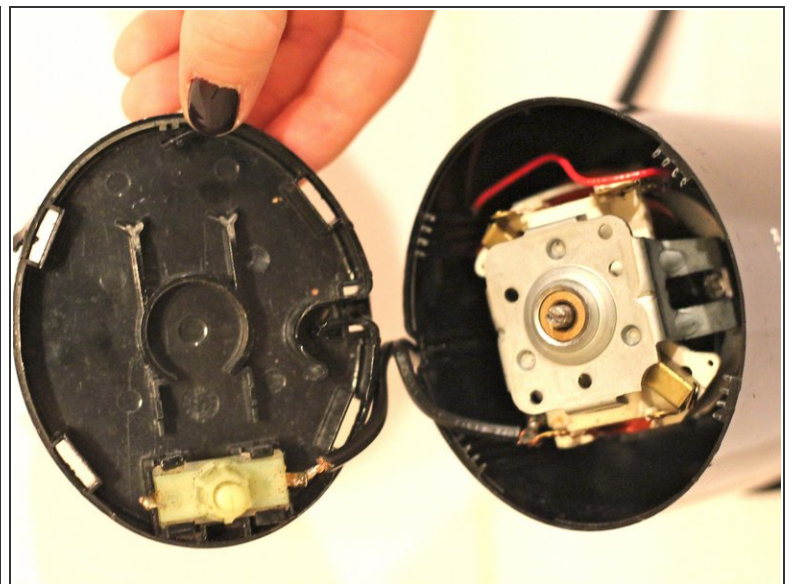
Step 2



- Wedge the spudger between the flat side of the E-clip and the outside wall of the slot. Then, loosen up the clip by prying it inward with the spudger.

 Try not to break these clips as this will cause structural integrity issues upon reassembly

Step 3



- Work your way around the four clips, loosening each a little at a time. Eventually, all four clips will be loose enough to remove the base plate.

To reassemble your device, follow these instructions in reverse order.

This document was generated on 2020-11-16 12:26:24 PM (MST).

