



JD Razor 2000 Quick-Release Lever Replacement

Replace the quick-release lever. The lever allows the scooter to collapse into a portable form. This guide will show the replacement process.

Written By: Shane





TOOLS:

- [T25 Torx Screwdriver](#) (1)
- [Phillips #2 Screwdriver](#) (1)
- [Macro Bit Set](#) (1)



PARTS:

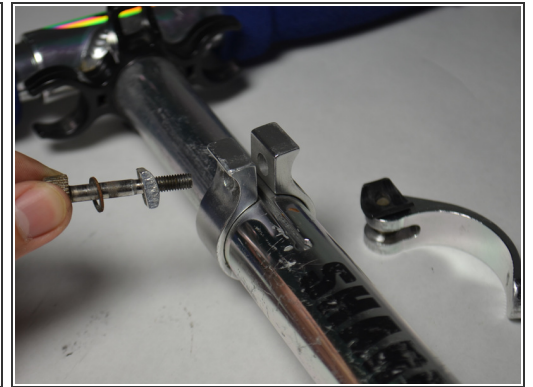
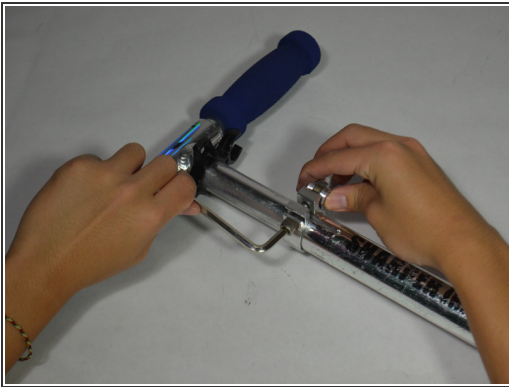
- [Razor Quick Release Level](#) (1)

Step 1 — Unlocking the Lever



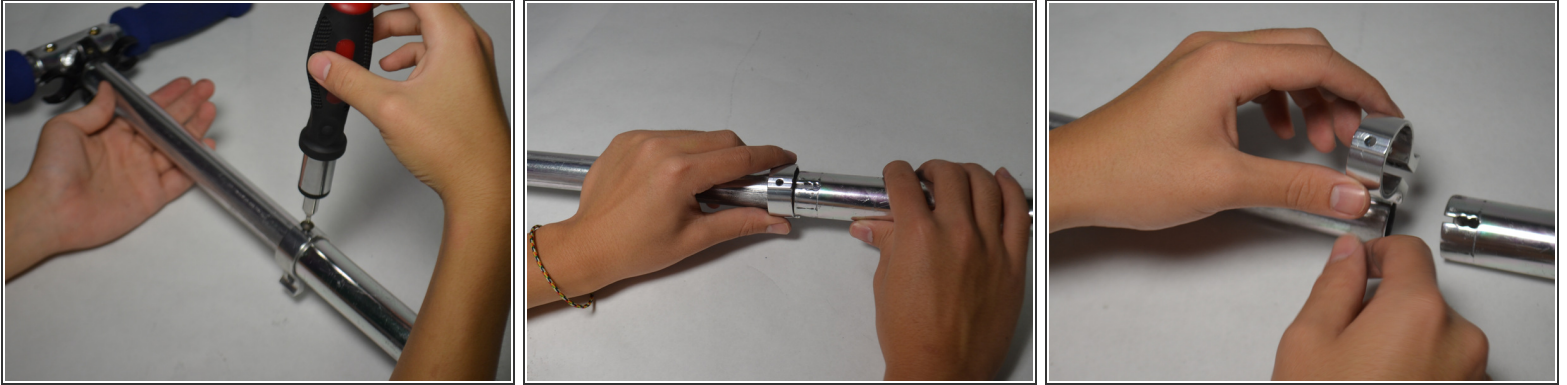
- Unlock the quick-release lever by turning the lever from a tightened position.

Step 2 — Loosening the Screw



- Use a 7/32" Allen Wrench or T25 Screwdriver to loosen the screw shown.
- Be sure to fasten the opposite side of the screw before unscrewing.
- ☑ Remove the screw and note the order of the parts for reassembly.

Step 3 — Removing the Latch



- Turn the quick-release lever over to reveal an 8mm screw.
- Use the Phillips #2 screw driver to remove the screw.
- After removing the screw, the circular latch will be detachable.

To reassemble your device, follow these instructions in reverse order.

This document was last generated on 2017-06-19 07:12:53 AM.