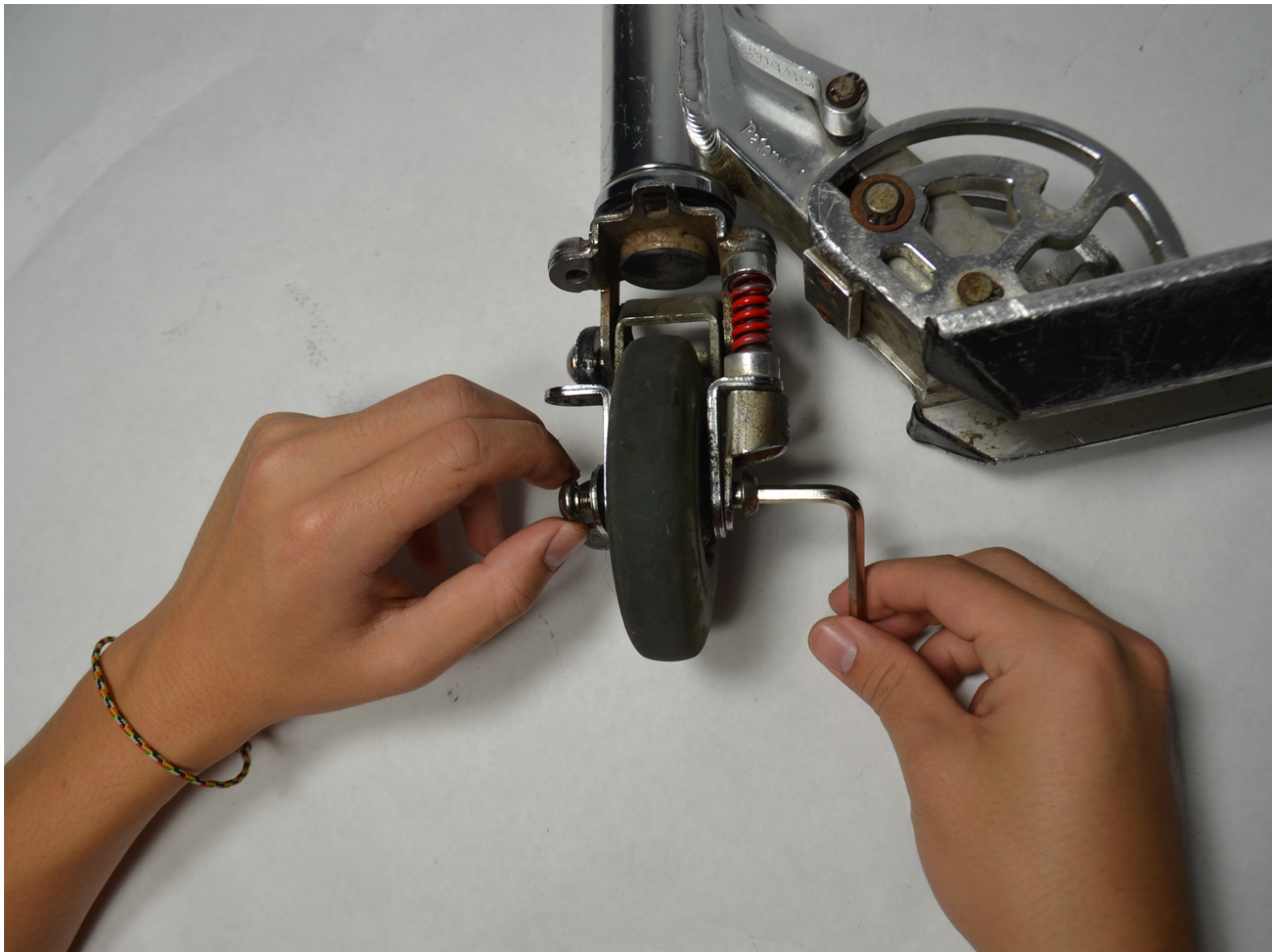




JD Razor 2000 Front Wheel Replacement

Replacing the front wheel.

Written By: Kaylan Naicker



INTRODUCTION

The front wheel of the JD Razor 2000 is located directly underneath the handlebar and T-Bar.



TOOLS:

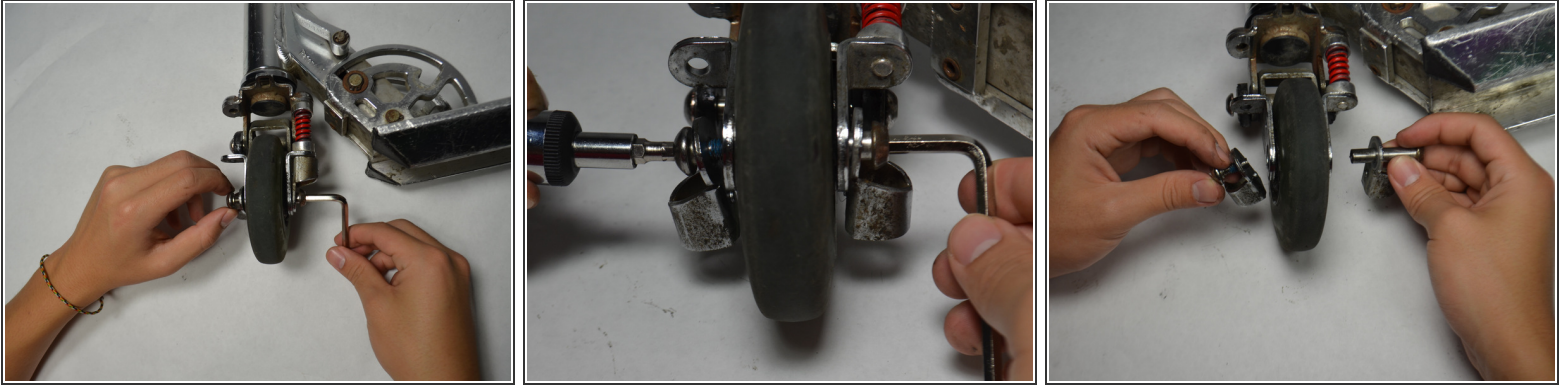
- [Lubricant](#) (1)
- [Macro Bit Set](#) (1)



PARTS:

- [98 mm Scooter Wheel](#) (1)
-

Step 1 — Removing the 1.75" Axle Bolt



- Orient the scooter so that the front wheel is facing you. Observe the right and left side of the wheel. Remember which is which throughout the guide.
- Using an Allen wrench, unscrew the axle bolt slowly from the right side while applying a constant pressure with your hand on the left side of the bearing.
 - ⓘ If the left side of the bolt turns while you unscrew the right side, you will need to use a second Allen wrench to prevent it from moving
 - ⓘ If the bolt does not move at all, or moves very little, try applying a lubricant on as much of the screw as possible and try again in 5 minutes.
- Carefully pull apart the bolt and bearing from either side of the wheel.

Step 2 — Removing the Wheel



- Grip the bottom of the wheel and gently slide it out.

To reassemble your device, follow these instructions in reverse order.

This document was last generated on 2017-06-24 07:33:47 AM.