



# DualShock 3 Battery Replacement

Replace your DualShock 3's lithium battery.

Written By: Andrew Bookholt



---

## INTRODUCTION

Use this guide to replace the internal lithium battery inside PlayStation 3 controllers.

---

### TOOLS:

- [Phillips #00 Screwdriver](#) (1)
  - [Tweezers](#) (1)
-

## Step 1 — Rear Cover



- Remove the five 7.2 mm Phillips screws securing the rear cover to the controller.

## Step 2



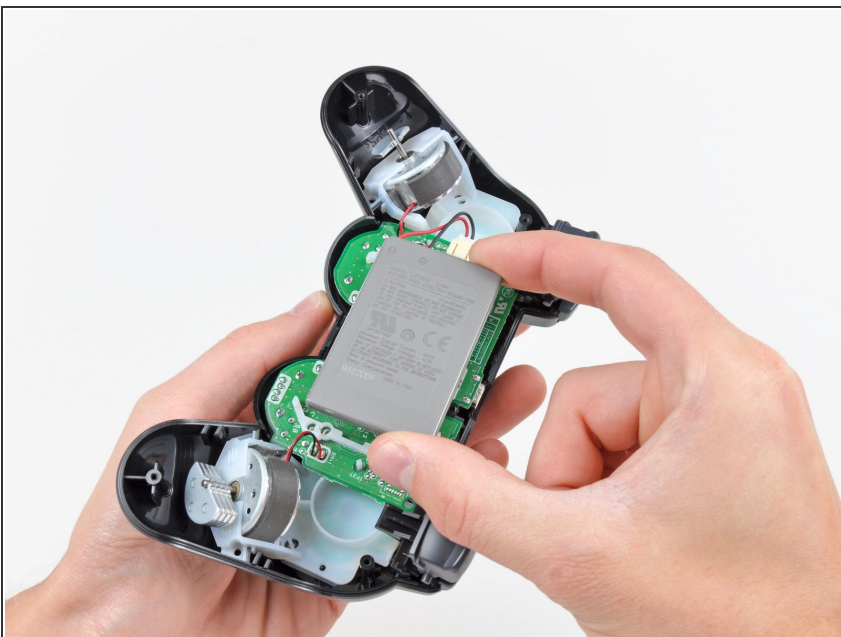
- Press on the rear cover between the analog sticks and slightly lift the lower edge of it away from the rest of the controller.

### Step 3



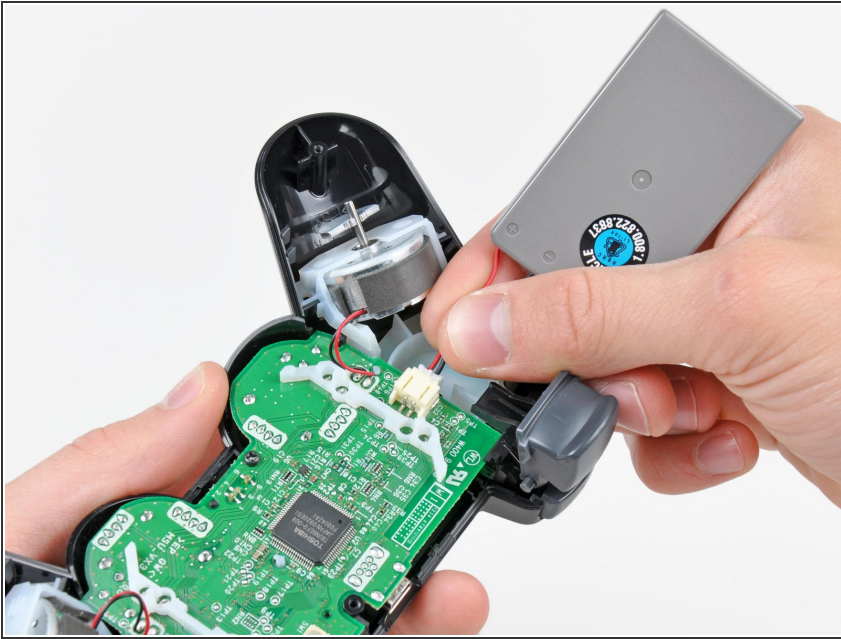
- Push the rear cover slightly toward the top edge of the controller to clear the front edge of the #2 triggers.
- Pull the rear cover away from the rest of the controller, being careful not to pop off the #2 triggers.
- ⓘ If you happen to accidentally pop off the trigger buttons, we have a [trigger button guide](#) to reattach them.

### Step 4 — Battery



- Lift the battery off the motherboard for enough clearance to access the battery connector.

## Step 5



- Carefully pull the battery connector away from its socket on the motherboard.
- ⓘ It may be helpful to use a pair of tweezers or pliers to grab the battery connector when you disconnect it for the first time. Only pull on the connector. Do not try to remove by pulling on the red and black wires.

To reassemble your device, follow these instructions in reverse order.

This document was last generated on 2019-07-13 09:19:43 PM.