



HP Photosmart Premium C309g Wireless Card Replacement

Replacement of the wireless card may be required if your printer is having wireless connectivity and communication problems.

Written By: Charles



INTRODUCTION

By opening up the printer by unscrewing a few screws. This will allow you to take the wireless card out of its socket and replace it.

TOOLS:

- [T9 Torx Screwdriver](#) (1)
 - [iFixit Opening Tools](#) (1)
-

Step 1 — Wireless Card



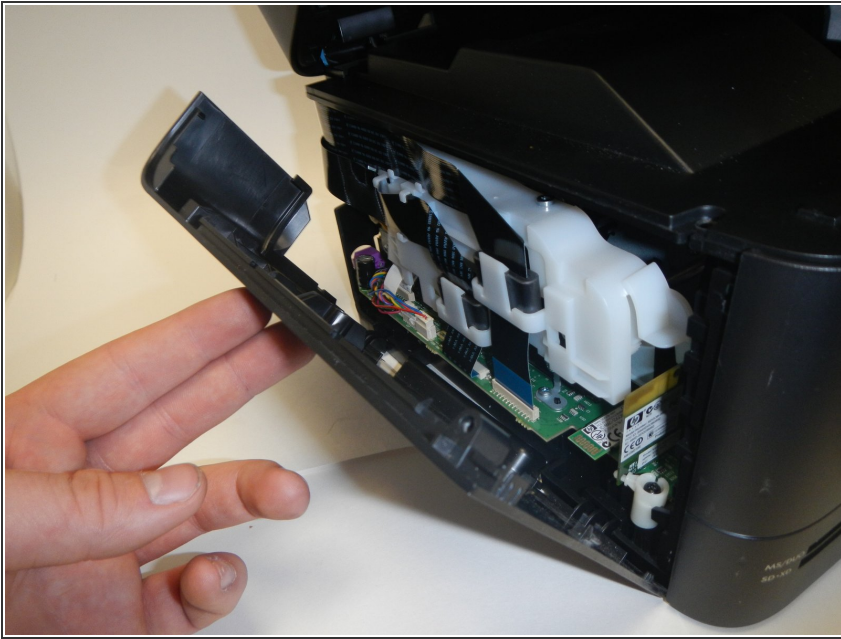
- Open the top of the printer as shown.
- ⓘ The wireless card is located on the left side of the printer if you are viewing it from the front.

Step 2



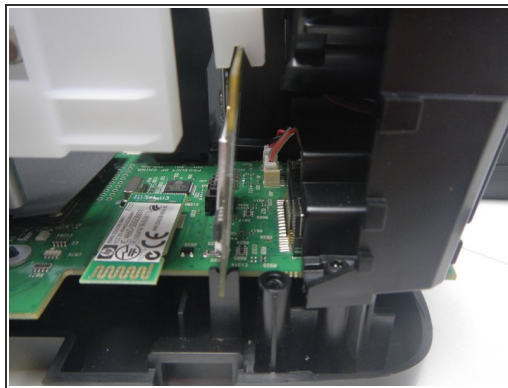
- Using the T9 Torx Security screwdriver bit, unscrew the 12 mm screw on the far left side on the top of the printer.

Step 3



- After unscrewing the screw, the left side will slide down revealing the wireless card.

Step 4



- Unscrew one 12mm screw and gently disconnect the wireless card from the motherboard.

To reassemble your device, follow these instructions in reverse order.