



LG G3 Loudspeaker Replacement

This guide shows how to replace or remove a broken or worn out loudspeaker in the LG G3 (D855).

Written By: Dominik Schnabelrauch



INTRODUCTION

Use this guide to replace or remove a broken or worn out loudspeaker in the LG G3 (D855).

The loudspeaker in the LG G3 is attached to the bottom half of the plastic panel above the daughterboard. To replace the loudspeaker, it's necessary to replace the panel as well.

TOOLS:

- [Spudger](#) (1)
- [Phillips #00 Screwdriver](#) (1)

PARTS:

- [LG G3 Speaker Assembly \(ATT\)](#) (1)
- [LG G3 Speaker Assembly \(T-Mobile\)](#) (1)
- [LG G3 Speaker Assembly \(Sprint\)](#) (1)

Step 1 — Back Cover



i Power off your phone before beginning disassembly.

- Insert a thumbnail, or a prying tool like a spudger, into the notch at the bottom left of the back cover.
- Pry the back cover up to separate its plastic clips.

Step 2



- Lift the back cover to release the rest of the plastic clips and remove it.
 - ⓘ In case you can't lift the back cover completely, slide your fingernail or your prying tool around the midframe to release the remaining clips.
- 🔧 To reinstall the back cover, press it firmly into place until you hear a snap from the plastic clips to form a seamless connection with the rear side of the phone.

Step 3 — Battery



- Use a fingernail or a prying tool at the marked notch to lever the battery out of its recess.

Step 4



- Lift the battery out of its recess and remove it.

Step 5 — Loudspeaker



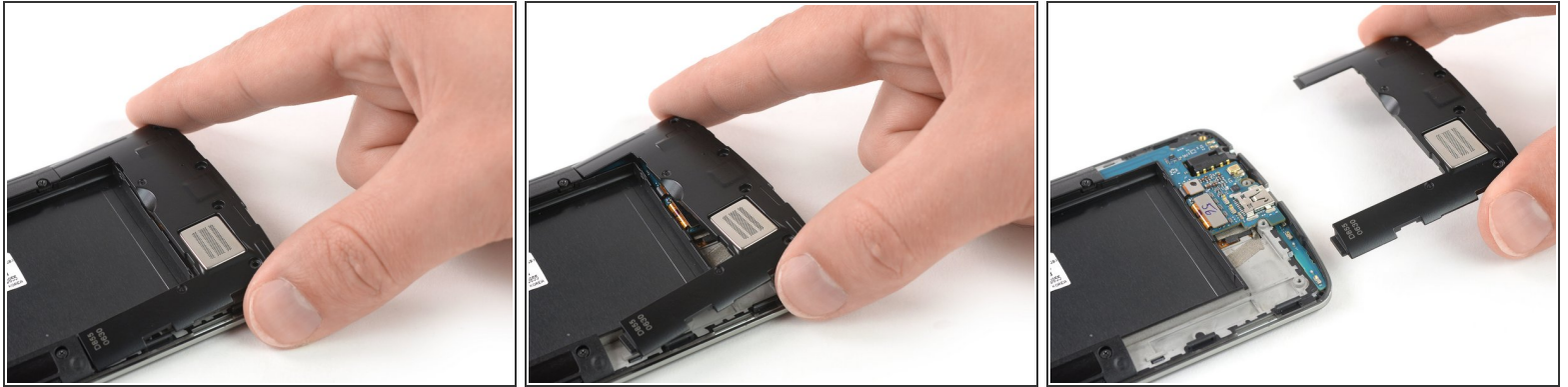
- Remove the four Phillips #00 screws (4 mm length).

Step 6



- Insert a thumbnail, or a prying tool like a spudger, into the notch at the bottom left of the back cover you used earlier to remove the back cover.
- Pry up the plastic panel, including the loudspeaker, until you can get a good grip.

Step 7



- Carefully remove the plastic panel including the loudspeaker by gently pulling it away from the phone assembly.

If possible, turn on your device and test your repair before installing new adhesive and resealing.

Take your e-waste to an [R2 or e-Stewards certified recycler](#).

Repair didn't go as planned? Try some [basic troubleshooting](#), or ask our [Answers Community](#) for help.