



Samsung Galaxy Light USB Charging Port Replacement

This guide is simple and easy to follow, it will walk you through replacing your USB charging port.

Written By: Diandra



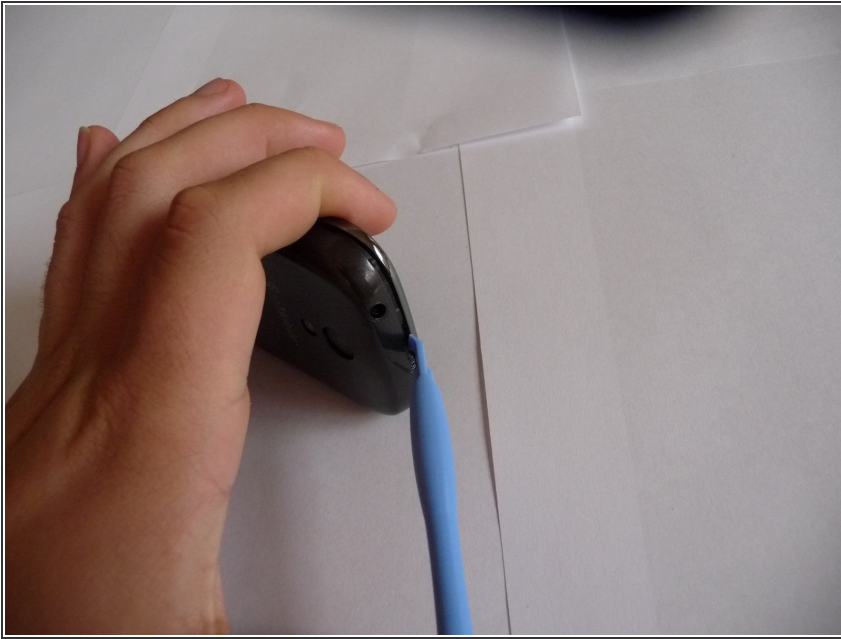
INTRODUCTION

Outline what you are going to teach someone how to do.

TOOLS:

- [iFixit Opening Tools](#) (1)
 - [Phillips #0 Screwdriver](#) (1)
-

Step 1 — Remove back cover



- Remove the back cover with the opening tool to reveal the battery

Step 2 — Remove battery



- Now remove the battery and keep it somewhere safe for now

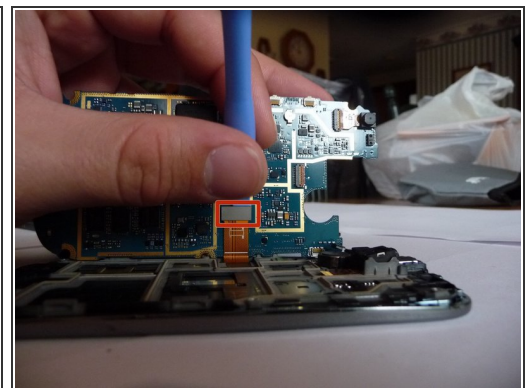
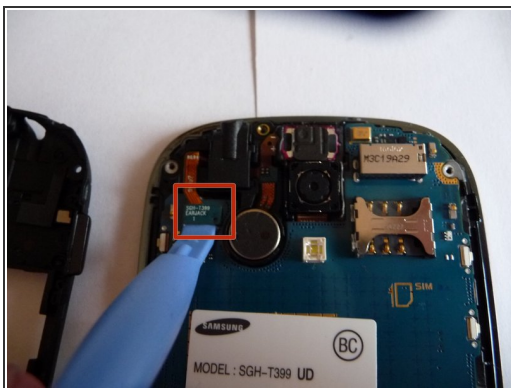
Step 3 — Unscrew motherboard from plastic protection



- Unscrew the nine screws shown with the Philips #0 screwdriver

⚠ Be sure not to lose any screws

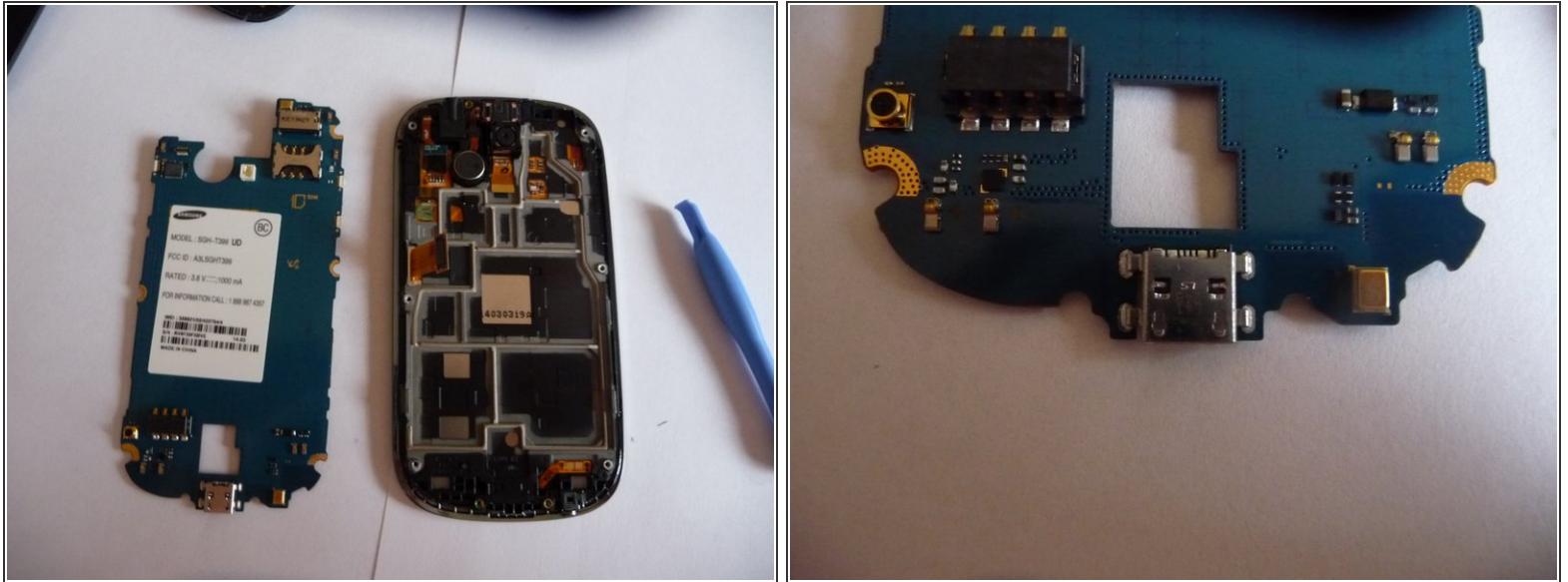
Step 4 — Detaching the motherboard



- You must detach and replace the entire motherboard the replace the charging port
- Slowly lift the motherboard up to pull it off the orange strip

⚠ Pull slowly, you do not want to break this strip

Step 5 — Inserting in new motherboard



- Due to the connector being sawdered on you must replace the whole mother boar so, insert your new motherboard
- ☑ Make sure you line it up correctly with the orange strip

To reassemble your device, follow these instructions in reverse order.