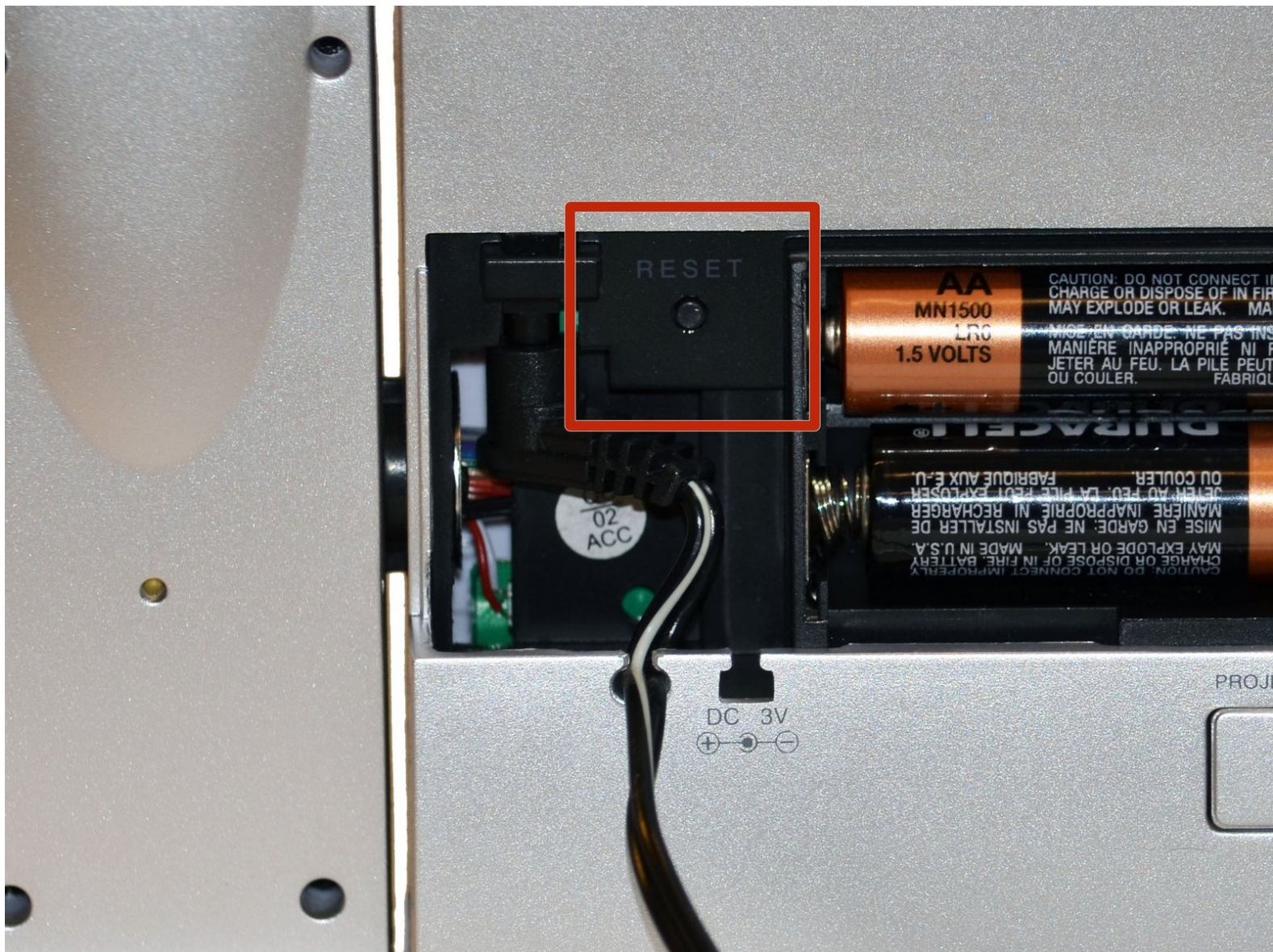




Oregon Scientific RM318PA Reset

This guide will help you reset your clock.

Written By: Liz Matresse



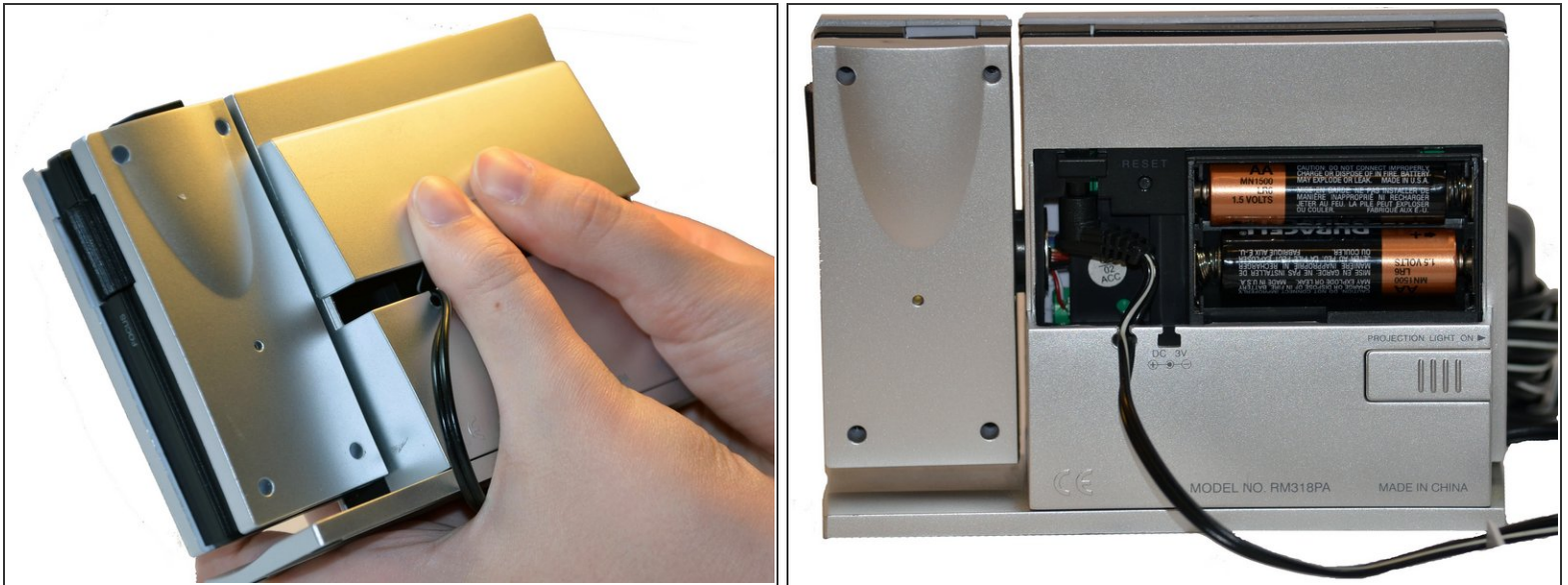
INTRODUCTION

This guide will provide instructions for removing the battery compartment cover and accessing the reset button.

TOOLS:

- [Pencil](#) (1)
-

Step 1 — Battery Cover



- Hold the clock so the screen is facing away from you.
- Using your thumbs, push up on the battery cover to remove.

Step 2 — Reset Button



- Using a pencil or other fine tipped instrument, press the RESET button.

To reassemble your device, follow these instructions in reverse order.

This document was last generated on 2019-07-15 01:03:20 PM.