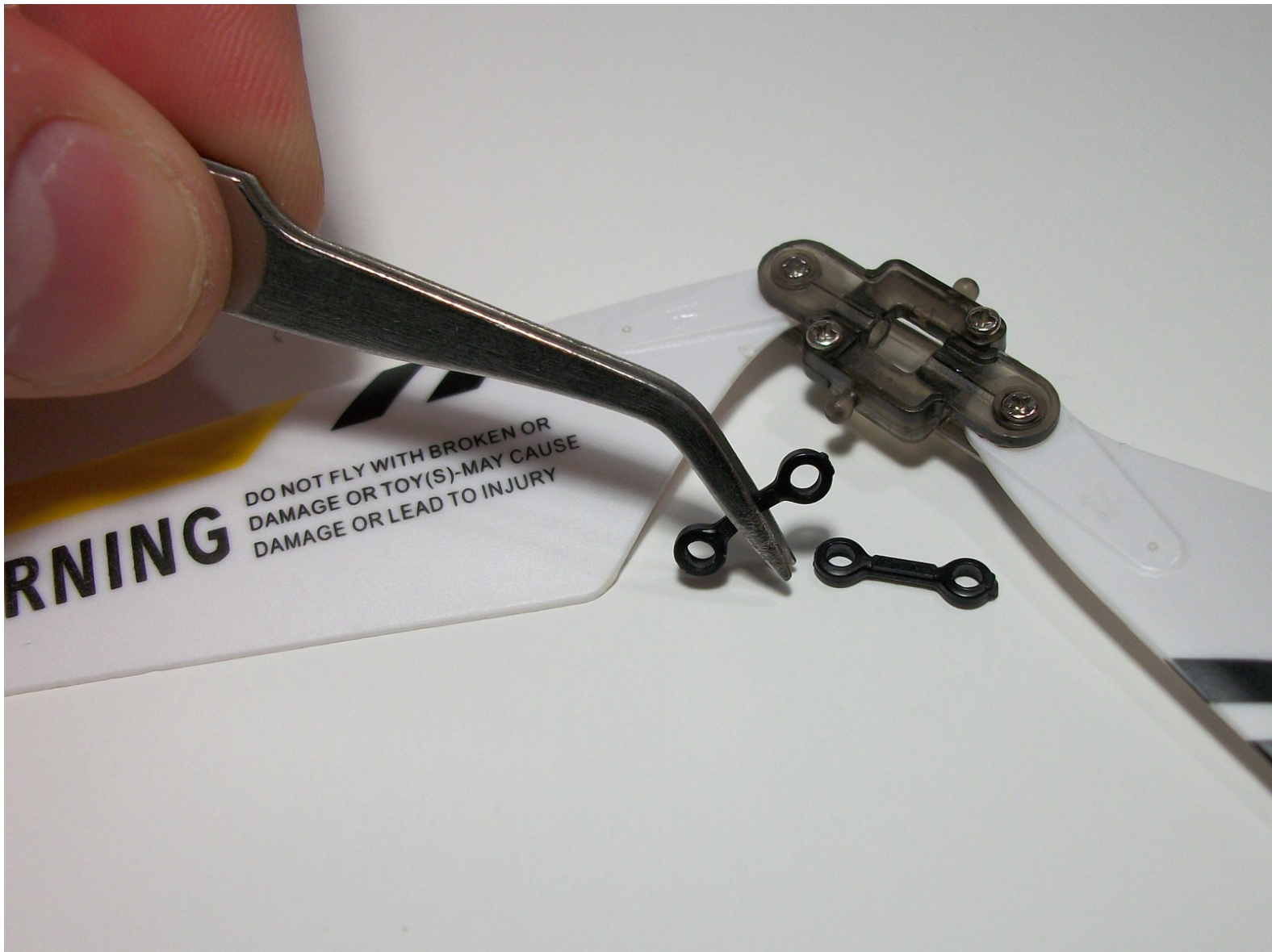




Syma S107 Gyro Replacement

Syma S107 gyro replacement.

Written By: Christopher Smith



INTRODUCTION

Replace the the gyro on your Syma S107 so that it stops self destructing.



TOOLS:

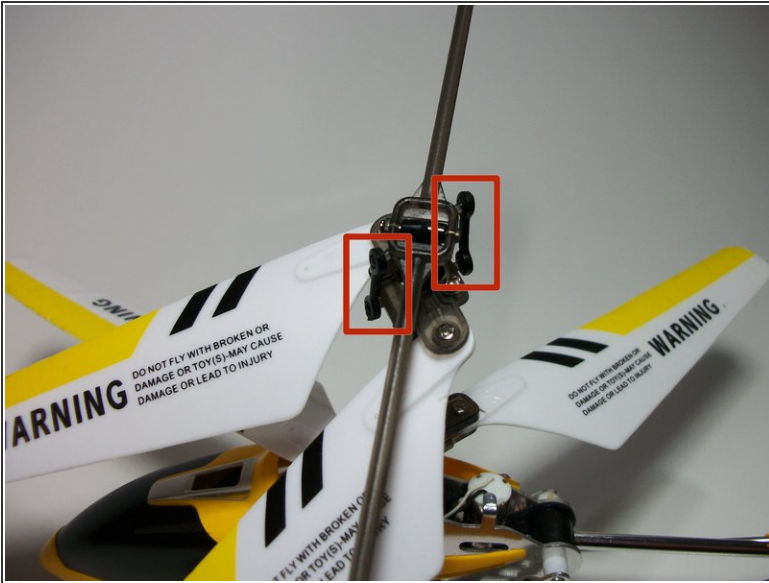
- [Phillips #0 Screwdriver](#) (1)
- [Tweezers](#) (1)



PARTS:

- [Syma S107 Full Set of Replacement Parts](#) (1)

Step 1 — Counterweight Bar



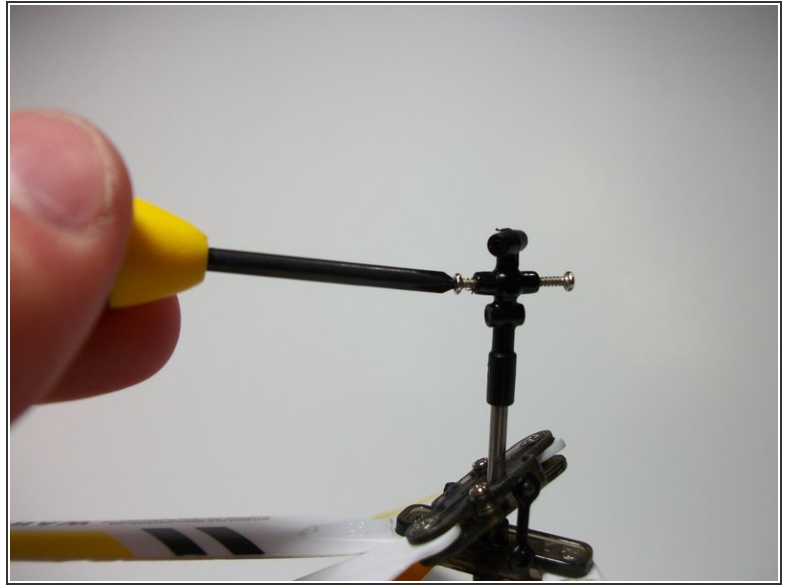
- Using tweezers, gently remove the two stabilizing links by pulling straight away from the point of connection.

Step 2



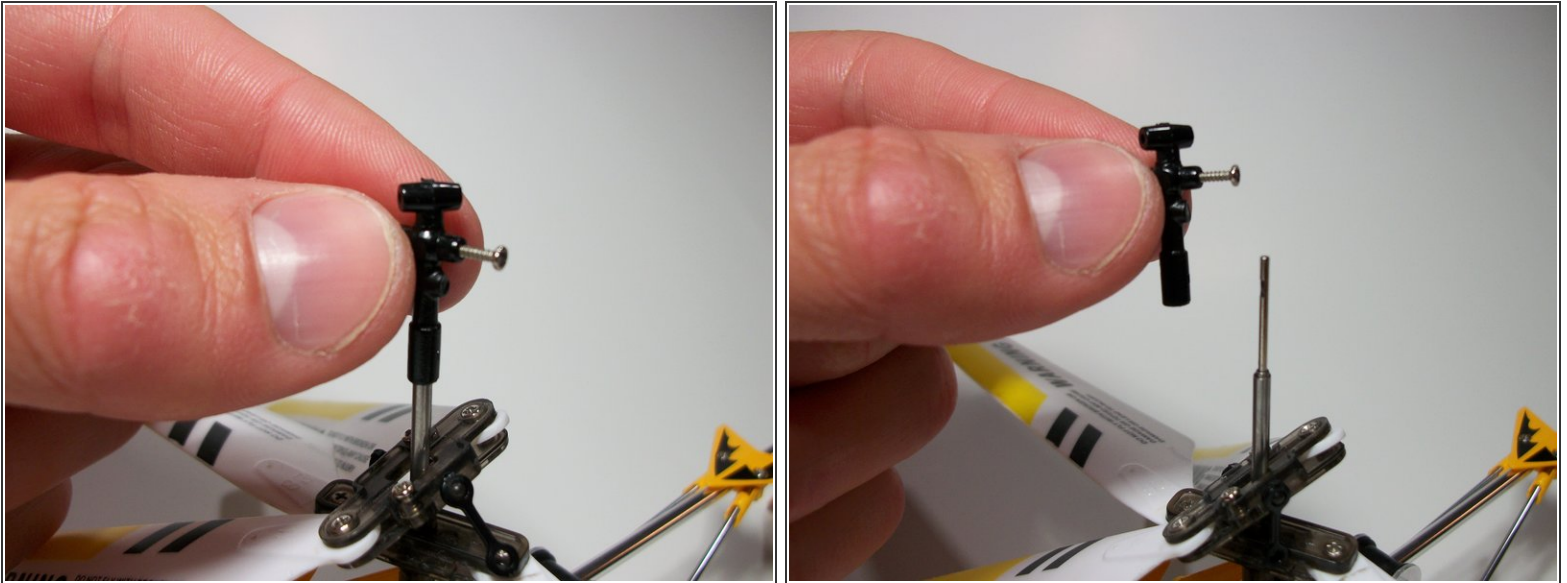
- Remove the counterweight bar by removing the screw.
 - One 10.1mm Phillips #0.

Step 3 — Gyro Carriage



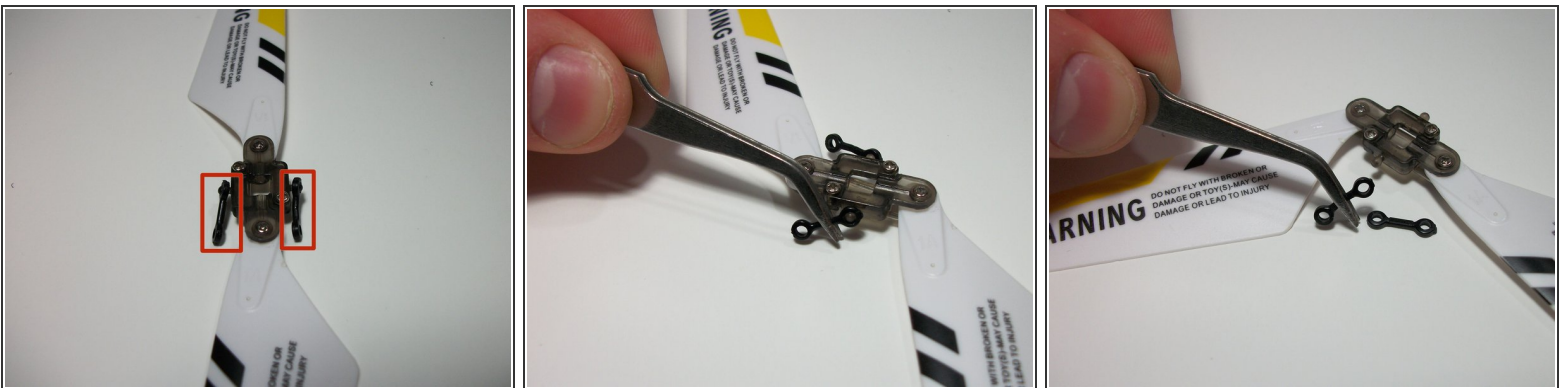
- Remove the gyro carriage by removing the following screws:
 - Two 5.6mm Phillips #0.
- ☞ When reinstalling these screws make sure to line up one screw with the keyway on the main rotor shaft.

Step 4



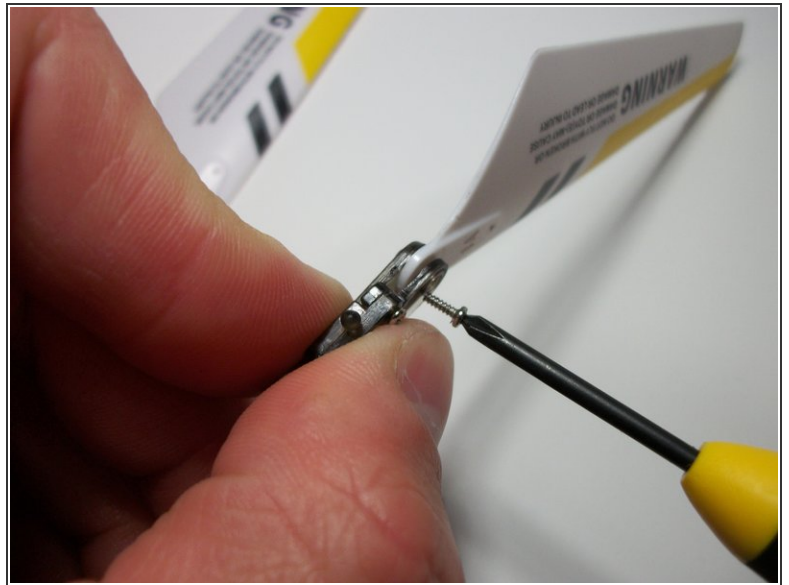
- Gently remove the broken gyro carriage by pulling up.
- Remove blade assembly by simply sliding it up and off the shaft.

Step 5 — Blade Carriage



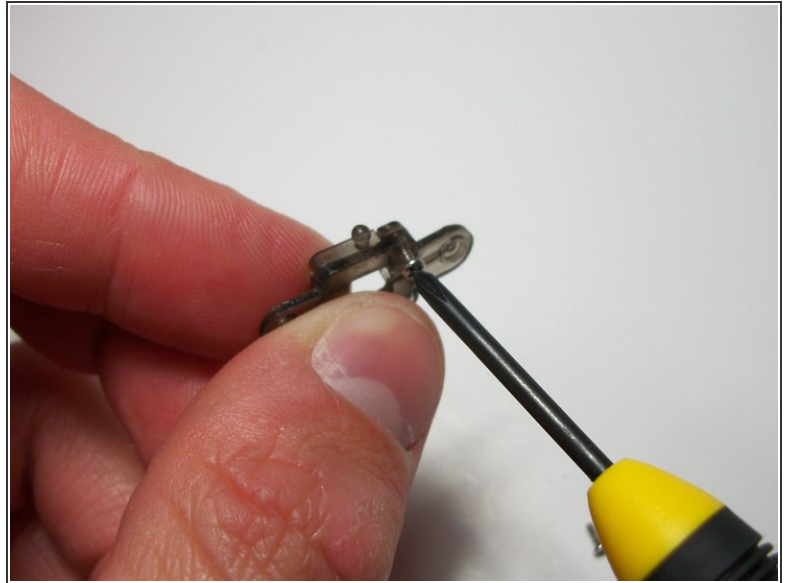
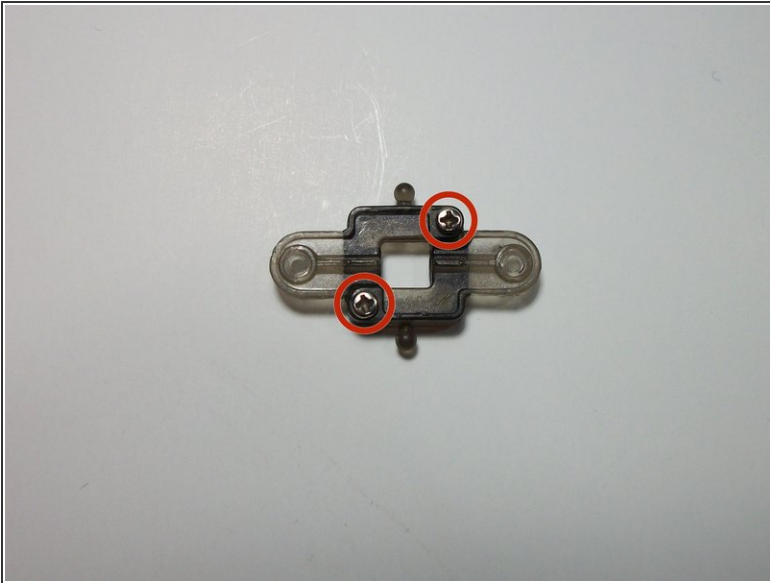
- Again using tweezers gently remove the stabilizing links from the blade carriage by pulling straight away from the point of connection.

Step 6



- Remove the blades from the blade carriage by removing the following screws:
 - Two 4.7mm Phillips #0.

Step 7



- Remove the following screws:
 - Two 4.5mm Phillips #0.
- ⓘ Make sure to remove any broken plastic pins before reassembling the components.
- ✦ You will have to slide the two halves of the blade carriage over the pins on the gyro carriage first when reassembling.

To reassemble your device, follow these instructions in reverse order.