



Canon EOS Rebel T2i Top Casing Replacement

This guide demonstrates how to replace the power button.

Written By: Stefan Seitler



INTRODUCTION

Removal of all outer casing in order to access the power button.

TOOLS:

- [Phillips #00 Screwdriver](#) (1)
 - [iFixit Opening Tools](#) (1)
 - [Phillips #000 Screwdriver](#) (1)
-

Step 1 — Remove the battery.



- Remove the battery using the 00 screwdriver.
- Remove the neck strap
- Remove the plastic casing around the viewing lens

Step 2 — Remove the back casing.



- Remove these screws.

Step 3 — Remove the front casing..



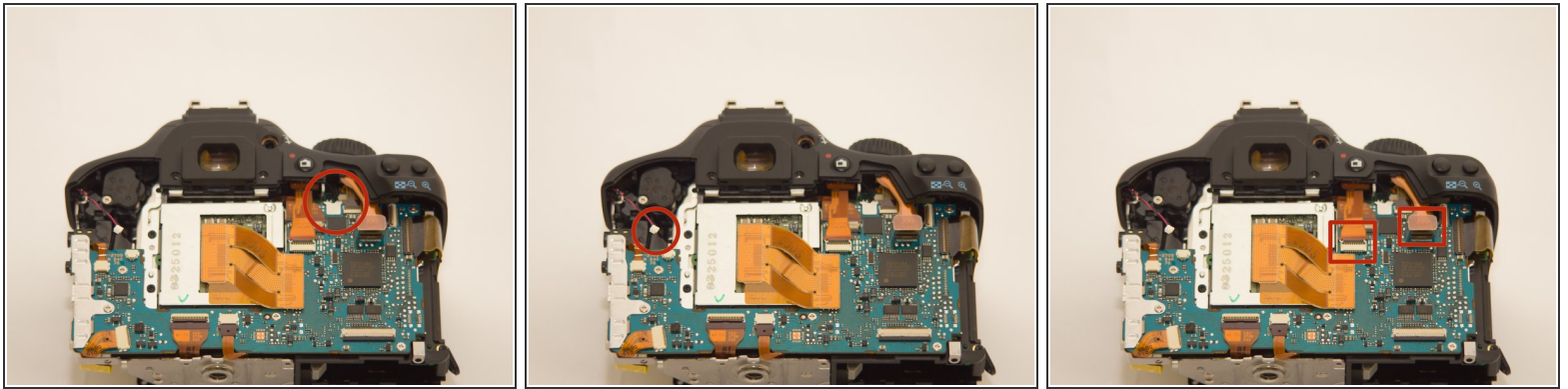
- Remove these screws.

Step 4 — Remove the top casing.



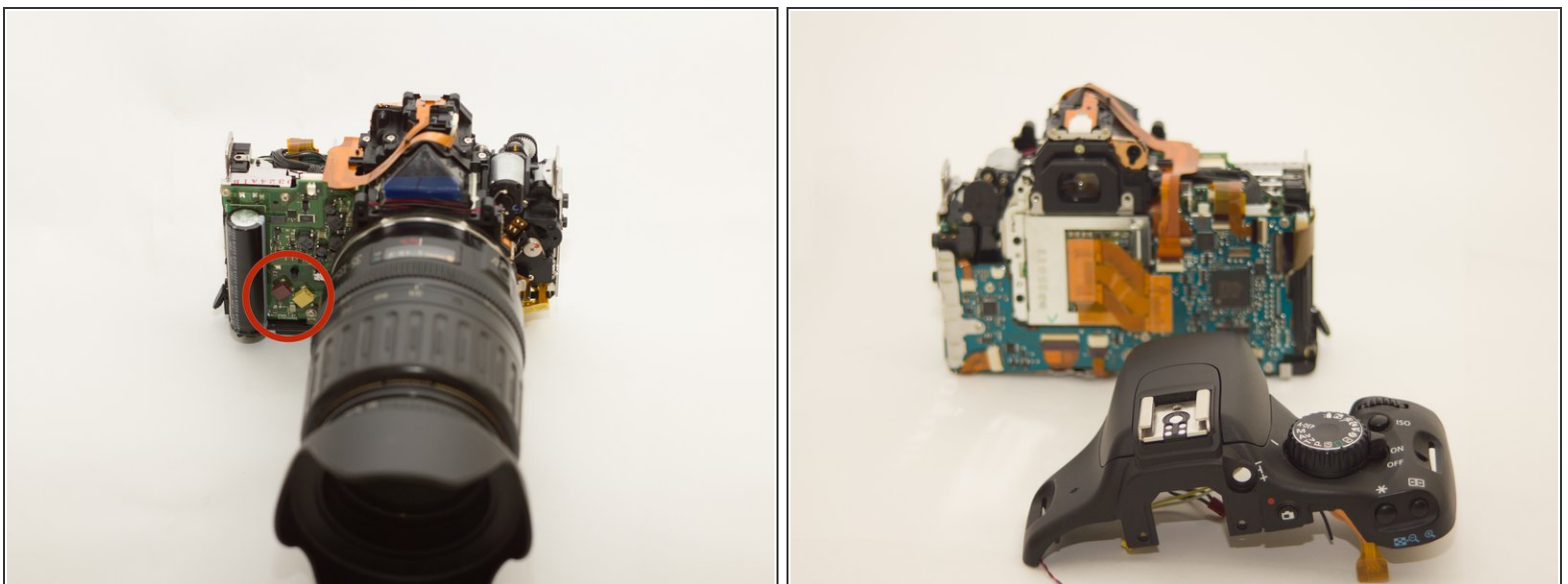
- Remove the screws below the view finder.
- Remove the screw of the focus wheel right from the view finder using the 000 screw driver
- Remove the top screws.
- Using your fingers, remove the left wire connecting the microphone.

Step 5 — Remove top casing continued.



- Use your fingers to complete the following steps. Remove the black wire beneath the power switch.
- Remove the wire on the left side shown.
- Remove the two ribbon wires on the right side.

Step 6 — Remove top casing and replace with a new casing.



- Remove the circled wires on the front with your fingers.
- Remove the top casing and replace it with a new one. This casing should include a new power switch. Reconnect all wires and replace the back and front casings.

This guide demonstrates how to replace the power button. To reassemble your device, follow these instructions in reverse order.