



Apple TV 1st Generation Power Indicator LED Replacement

Many Apple TV forums report a weakening or dimming of the white power indicator. This is due to premature failure of a white LED. It is possible to replace the LED and restore the power light.

Written By: John Matheson

INTRODUCTION

This repair requires either an extremely fine tipped soldering iron and extremely steady hands, or an SMD rework station.

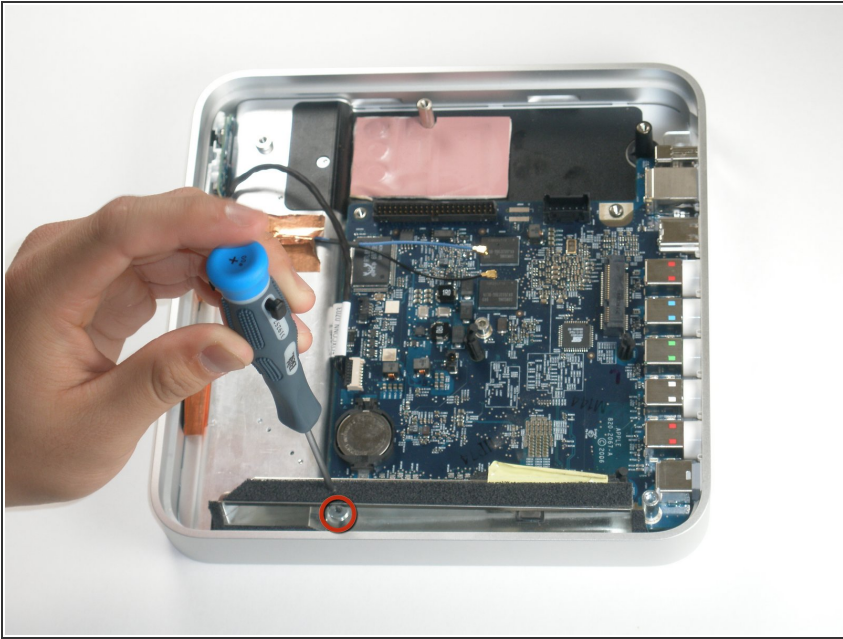
TOOLS:

- [Desoldering Braid](#) (1)
- [Soldering Iron](#) (1)
- [T20 Torx Screwdriver](#) (1)
- [T8 Torx Screwdriver](#) (1)
- [Tweezers](#) (1)

PARTS:

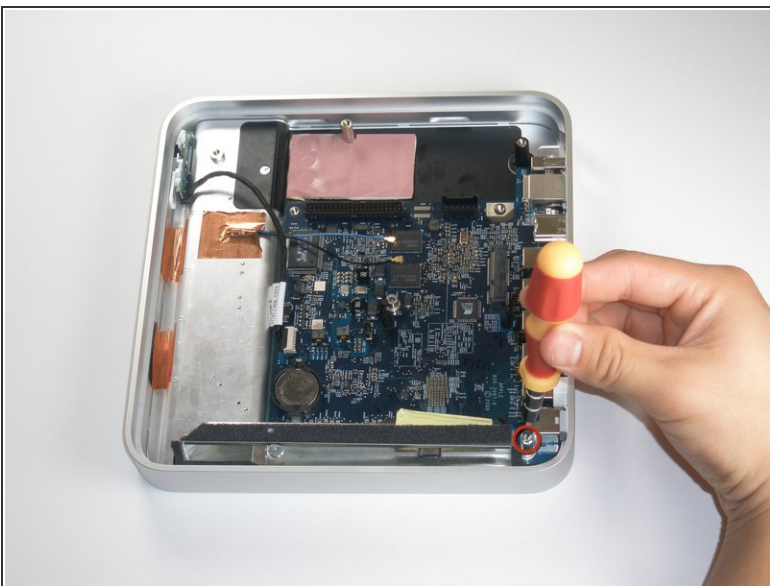
- [White LED](#) (1)

Step 1 — Logic Board



- Remove the T8 Torx screw securing the metal shield to the case.
- ⓘ To remove the T8 screw, you must insert the screwdriver through the access hole in the metal shield. The access hole is located near the PRAM battery.

Step 2



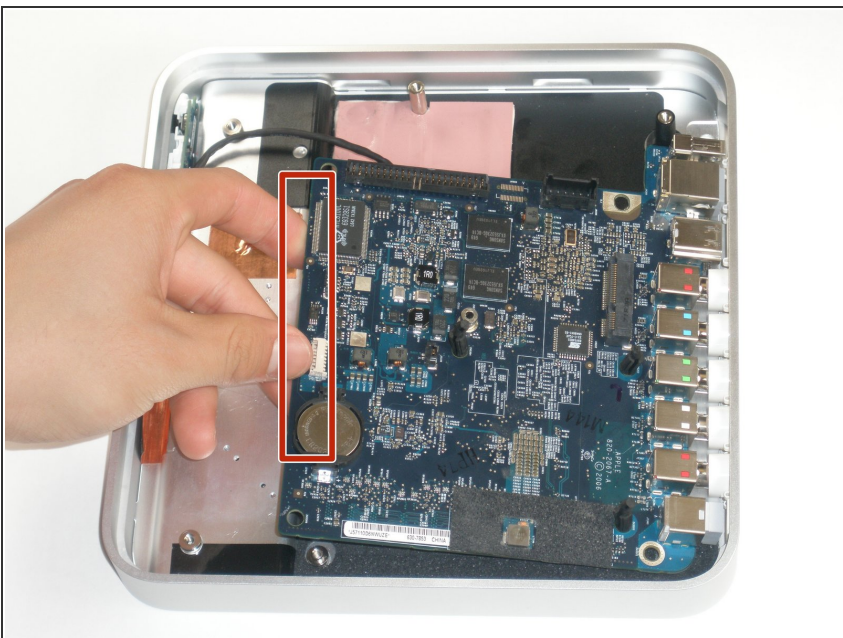
- Remove the T20 screw located near the digital audio port.
- Lift and remove the metal shield from the upper case of the Apple TV.

Step 3



- Use a pair of tweezers to pull the IR cable straight away from its socket on the logic board.
- ⓘ Make sure to pull the connector parallel to the face of the logic board. Do not pull the connector straight up.

Step 4



- Lift the left edge of the logic board (nearest the PRAM battery) upwards and slide it out of the case, away from the ports.
- ⚠ Be careful not to damage the ports when sliding the logic board out of case.
- The logic board remains.

Step 5 — Power Indicator LED



- Carefully peel back the two copper sticky grounding strips near the LED module.
- Swing the outer aluminium case up and carefully slide it towards the connector side of the logic board until it comes off. Remove the two Phillips #0 screws securing the LED module.
- Carefully unplug the module from the logic board and remove it from the case.

Step 6



- There are two miniature SMD LEDs. One is clear and one is yellow. Unsolder the YELLOW colored LED. Replace with another high intensity SMD LED. The anode (+) is marked on the circuit board and is located away from the infrared receiver side.
- ⓘ SMD LEDs are difficult to find as a spare part. You can carefully ground down a normal sized LED with a Dremil until it is the correct fit.
- Reassemble the Apple TV following the reverse of these to steps used to disassemble it.

To reassemble your device, follow these instructions in reverse order.