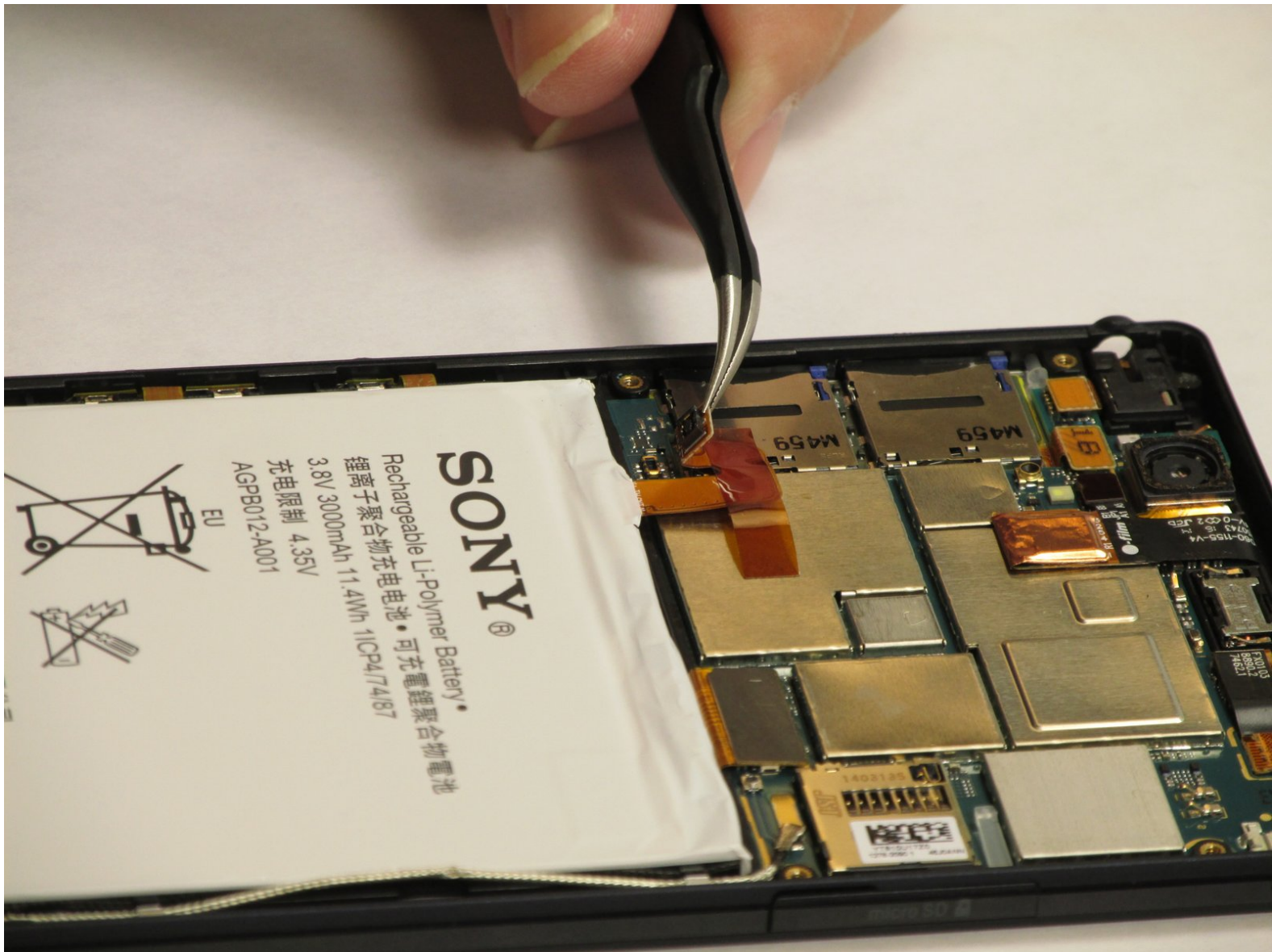




# Sony Xperia T2 Ultra Dual Battery Replacement

Replace your dying battery to bring the power back to your Sony Xperia T2 Ultra Dual.

Written By: Christina Wojaczyk



---

## INTRODUCTION

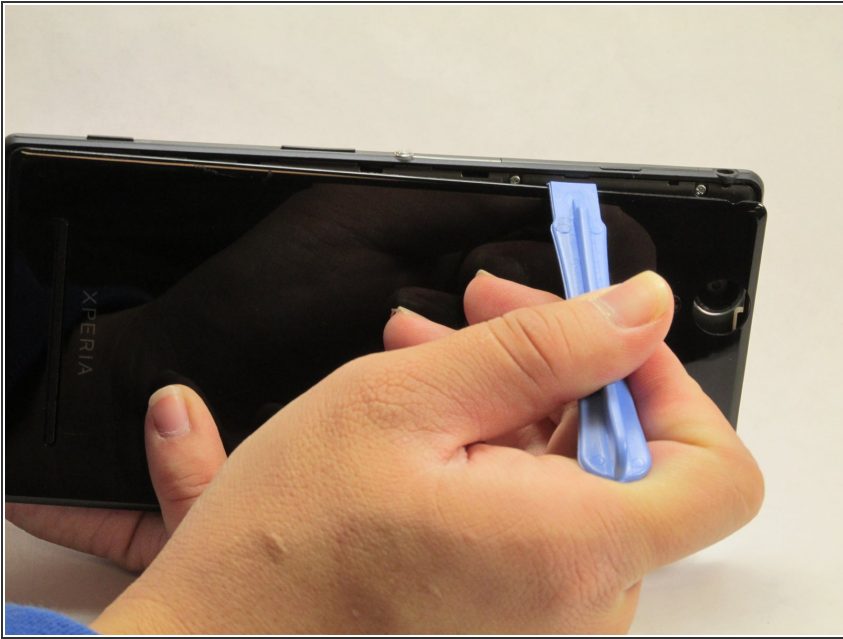
This guide is to show what components need to be removed in order to replace your battery.

---

### TOOLS:

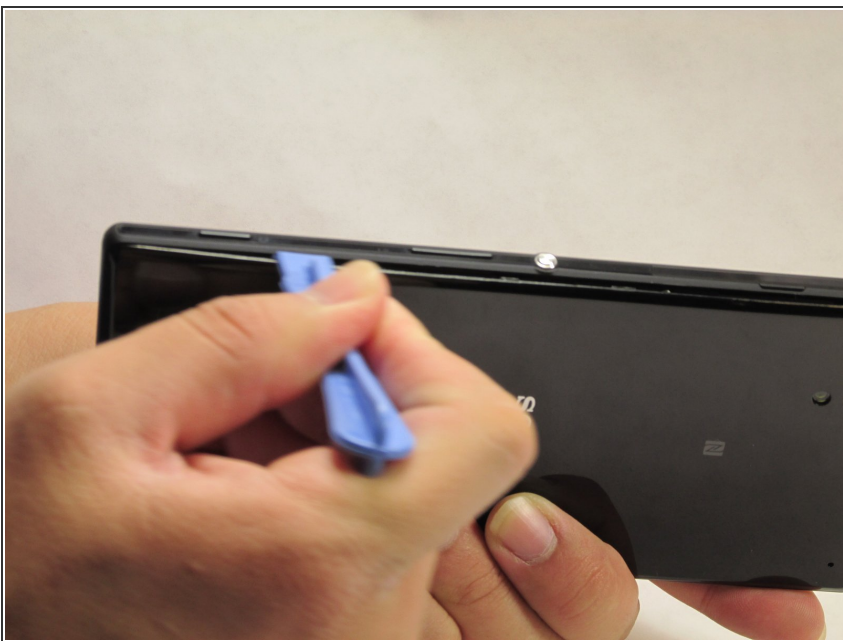
- [Phillips #00 Screwdriver](#) (1)
  - [Tweezers](#) (1)
  - [iFixit Opening Tools](#) (1)
-

## Step 1 — Rear Case



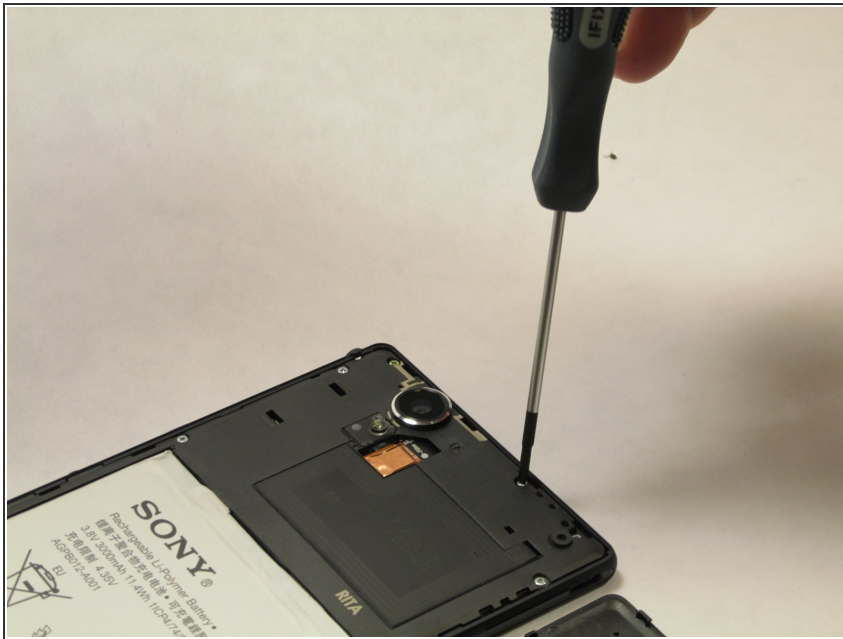
- Using the spudger, pry open the back cover by starting alongside the edge of the back cover.

## Step 2



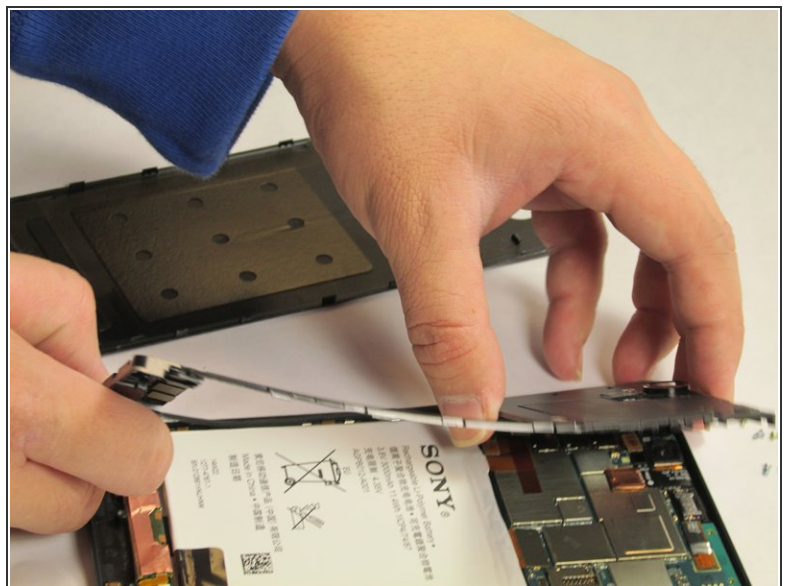
- Once the part of the back cover has been opened up. Slide the spudger to pry completely detach the cover from the phone.

### Step 3 — Removing the internal cover



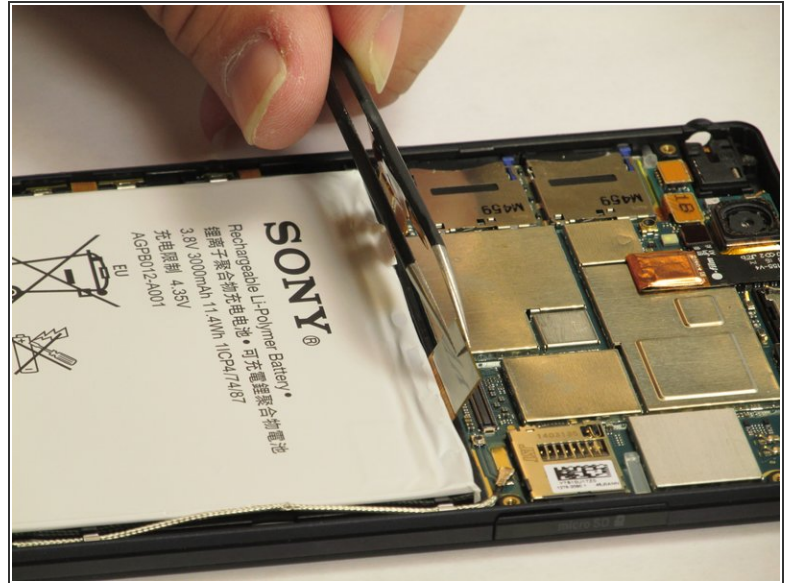
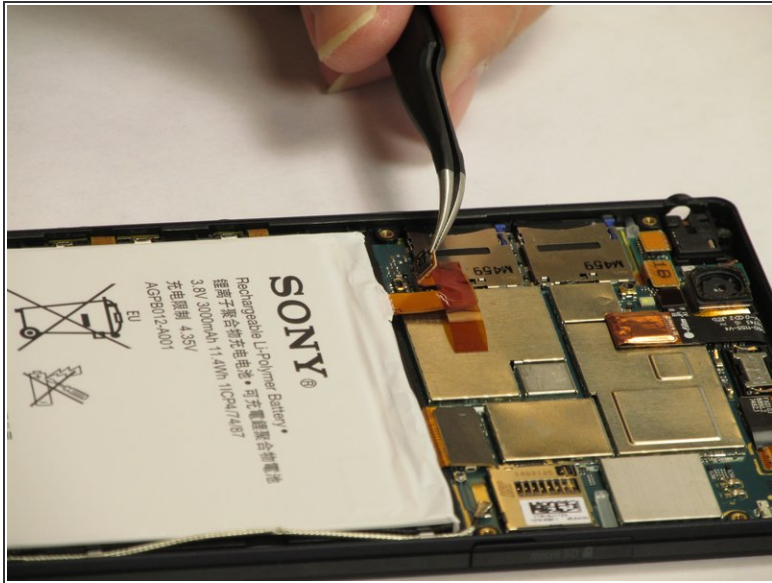
- Using the Phillips #00 Precision screwdriver, take out 8 silver screws (3.15mm) and 5 gold screws (3.9mm) for a total of all the screws attached to the flat plate. 3 of the gold screws are located at the top of the phone and the other 2 screws are located at the bottom of the phone.

### Step 4



- To remove the internal cover, use the plastic spudger tool and pry the cover from the phone as shown in the picture.

## Step 5 — Battery



- Using the Tweezer, carefully pry open the corresponding chips that are attached to the battery as shown. Then using the spudger, pry the battery away from the phone and watch out for the sticky substance keeping the battery to the phone.

To reassemble your device, follow these instructions in reverse order.