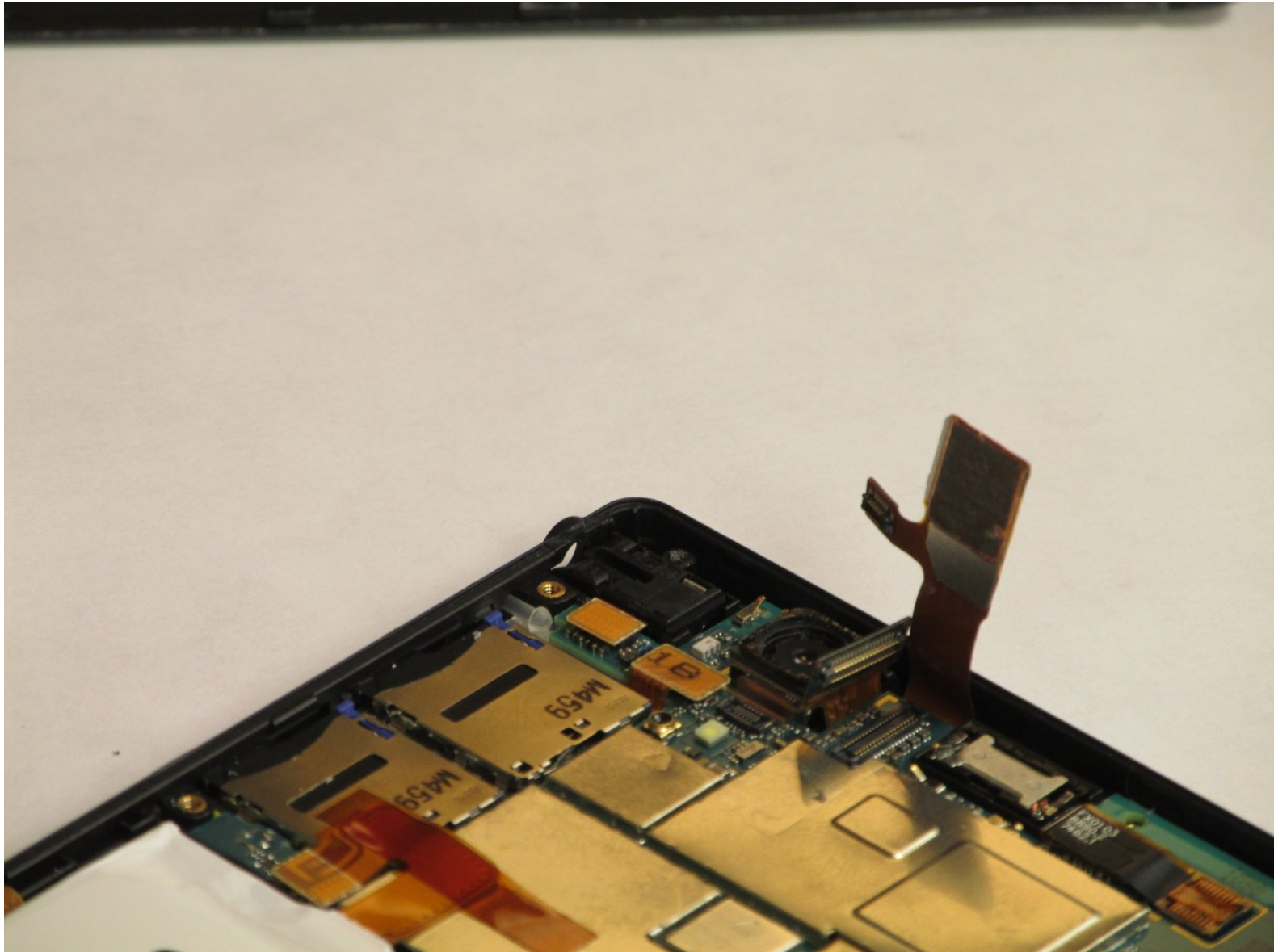




# Sony Xperia T2 Ultra Dual Front Facing Camera Replacement

Can't take a selfie? Replace that front facing camera!

Written By: Christina Wojaczyk



---

## INTRODUCTION

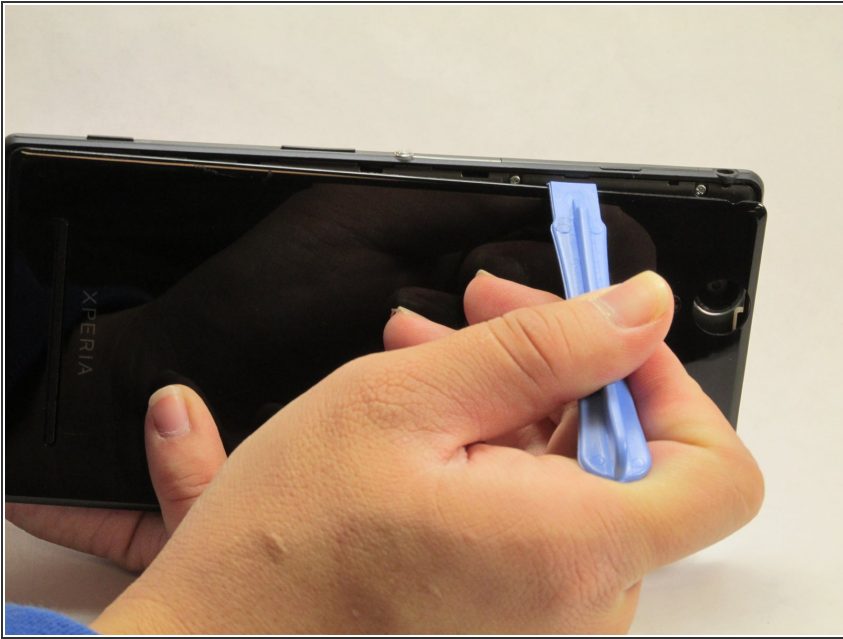
This guide can help you remove the front facing camera.

---

### TOOLS:

- [Tweezers](#) (1)
  - [iFixit Opening Tools](#) (1)
  - [Phillips #00 Screwdriver](#) (1)
-

## Step 1 — Rear Case



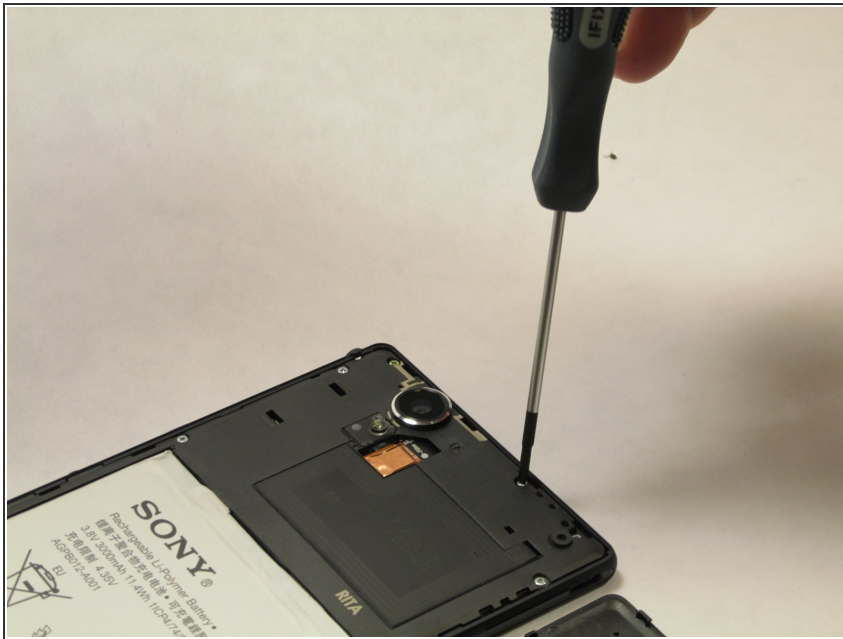
- Using the spudger, pry open the back cover by starting alongside the edge of the back cover.

## Step 2



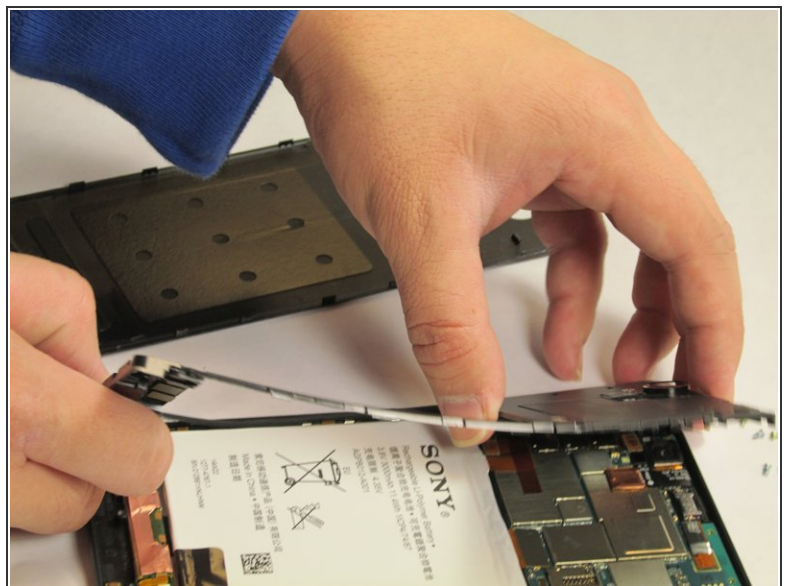
- Once the part of the back cover has been opened up. Slide the spudger to pry completely detach the cover from the phone.

### Step 3 — Removing the internal cover



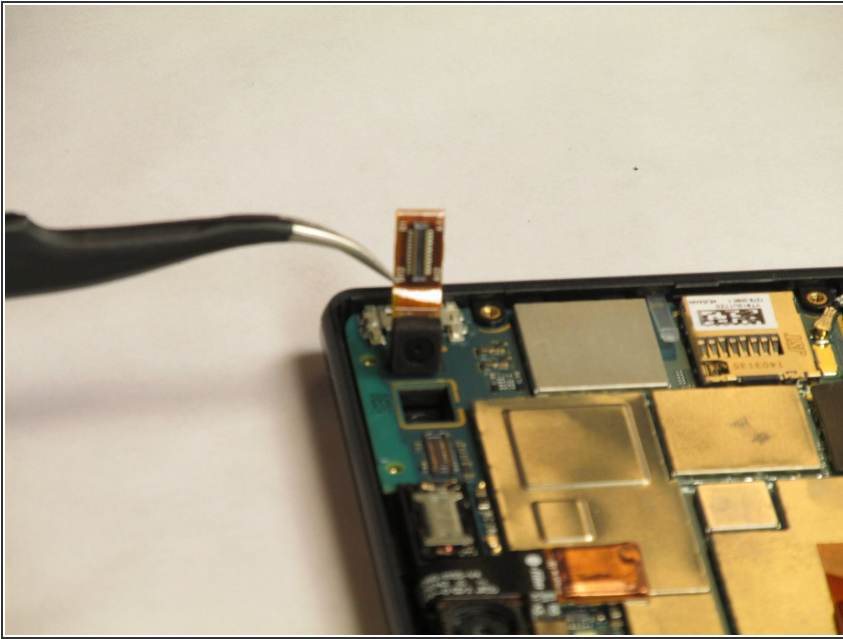
- Using the Phillips #00 Precision screwdriver, take out 8 silver screws (3.15mm) and 5 gold screws (3.9mm) for a total of all the screws attached to the flat plate. 3 of the gold screws are located at the top of the phone and the other 2 screws are located at the bottom of the phone.

### Step 4



- To remove the internal cover, use the plastic spudger tool and pry the cover from the phone as shown in the picture.

## Step 5 — Removing the Front Camera



- Using the tweezers, carefully pry open the chip for the front facing camera as shown. Then using the tweezers, carefully remove the front facing camera component.

To reassemble your device, follow these instructions in reverse order.

This document was last generated on 2019-07-23 03:01:23 PM.