



# LG G2 mini LTE Front Facing Camera Replacement

If the front camera is no longer able to take pictures or is cracked, it will need to be replaced. These steps will assist you in doing so.

Written By: Aung Myin Thu Mayet



 **TOOLS:**

- [Spudger](#) (1)
- [Phillips #2 Screwdriver](#) (1)

 **PARTS:**

- [LG G2 mini Front Facing Camera Replacement Part](#) (1)

## Step 1 — Remove the Battery Cover



- Remove the back cover by placing your fingernail in the crease between the cover and the charging port.
- Pry upward and the cover should pop off easily.

## Step 2 — Remove the Battery



- Remove the battery from the battery bay by prying with your finger at the groove on the lower end of the battery bay.

### Step 3 — Unscrew the Motherboard Cover



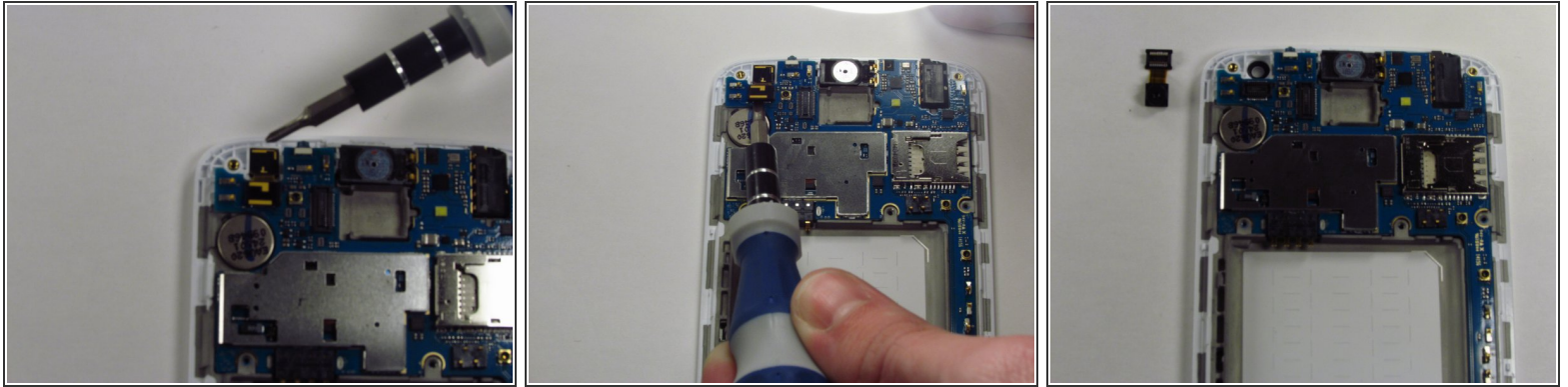
- Locate 10 screws and remove each one using a Philips head screw driver.

### Step 4 — Remove the Motherboard Cover



- Use a plastic spudger tool to pry away the cover by placing it between the cover and the phone.
- Pry all the way around the phone about every centimeter until the cover is completely separated from the phone.

## Step 5 — Remove the Front Facing Camera



- Locate the front facing camera.
- Pry the ribbon cable off of it's connector using the plastic spudger tool or a flat head screwdriver.
- Use your finger to remove the camera.

To reassemble your device, follow these instructions in reverse order.