



# Samsung CLP-300 Fuser Unit Replacement

This guide will help you replace the fuser unit in your Samsung CLP-300 in order to alleviate problems with blurry print quality.

Written By: Heather Howard



## INTRODUCTION

Follow these steps to replace the fuser unit by taking off the back cover of your Samsung CLP-300.

## Step 1 — Fuser Unit



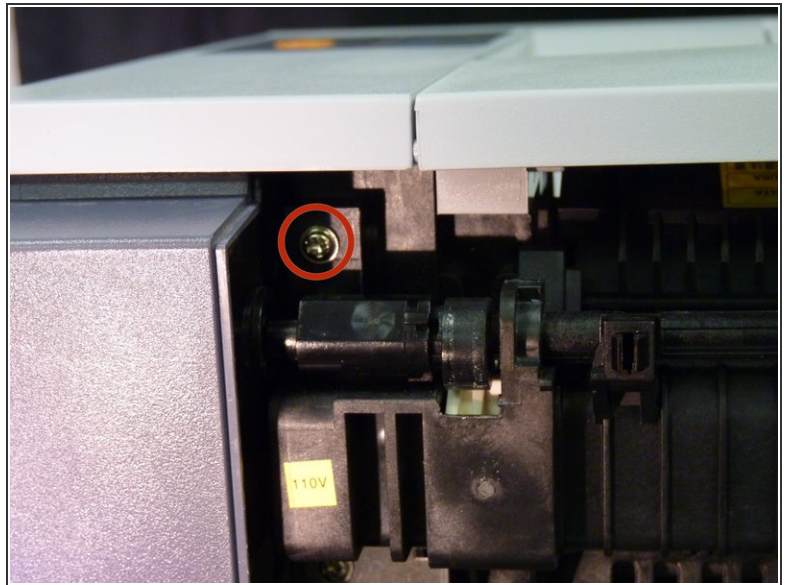
- Turn the printer off and wait a few minutes for it to cool.
- Turn printer around so that you are looking at the rear panel.

## Step 2



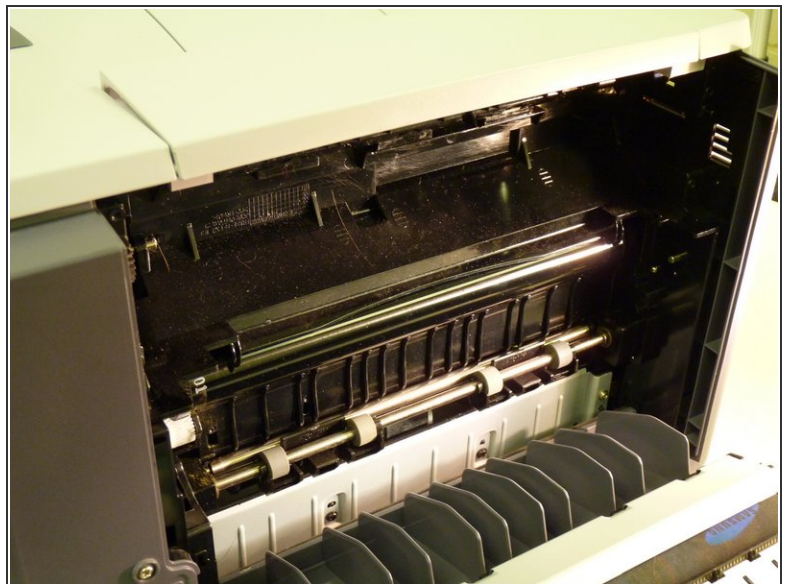
- Open back of printer by pushing down handle.

### Step 3



- Remove the four screws that attach the fuser unit to the printer.

### Step 4



- Slide fuser unit out of the printer.
- Remove packaging from new fuser unit.
- Insert new fuser unit.

To reassemble your device, follow these instructions in reverse order.

This document was last generated on 2019-07-16 11:56:19 AM.