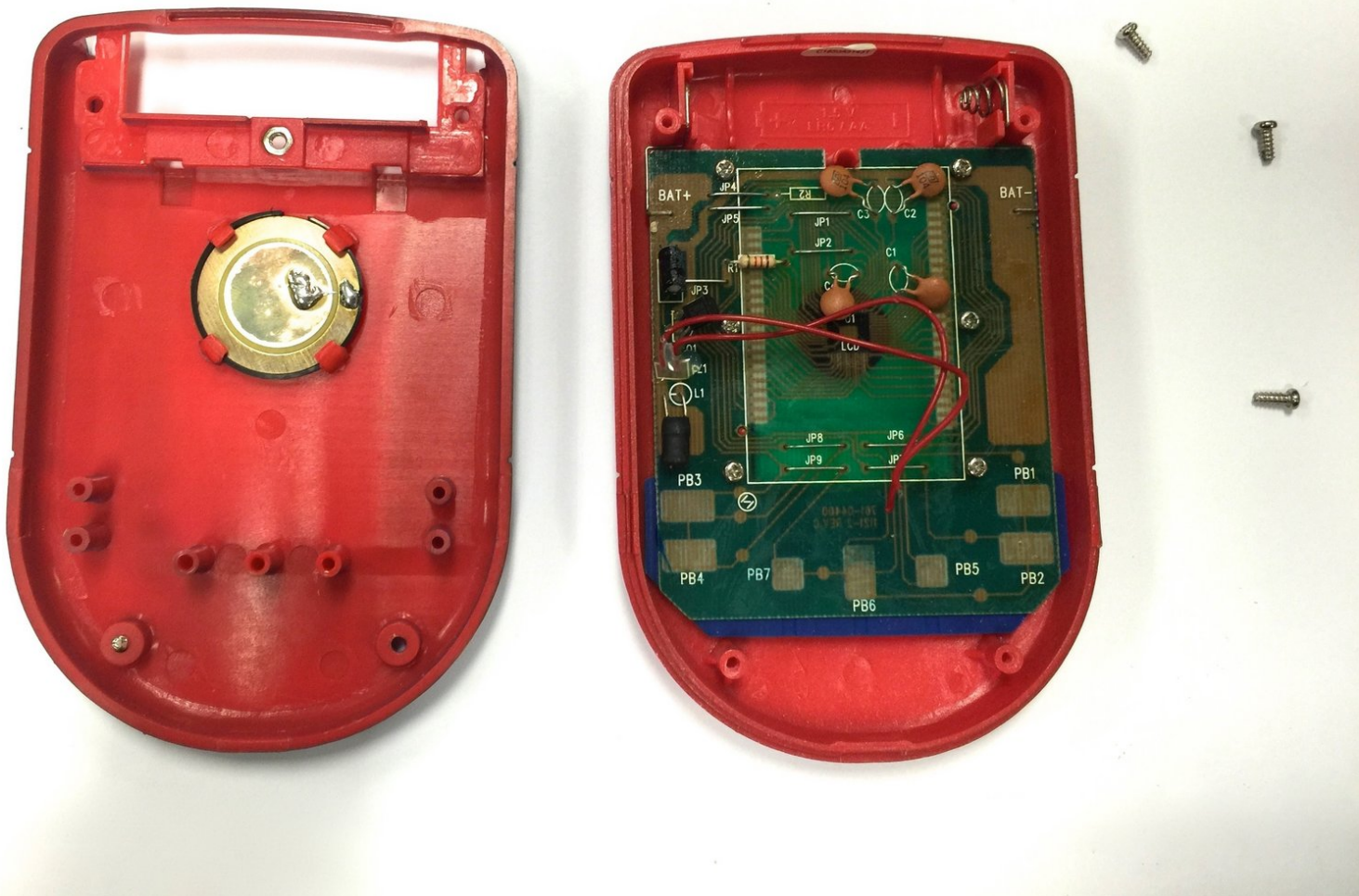




# Connect Four Electronic Handheld Back Casing Replacement

This guide will show you how to remove and replace the back casing for the Connect Four Electronic Handheld.

Written By: Wil



---

## INTRODUCTION

To access any of the internal components of the Connect Four Electronic Handheld, you will need to remove the back casing.

---

### TOOLS:

- [Small Phillips Head Screwdriver](#) (1)
-

## Step 1 — Ensure the device is off.



- Make sure the Connect Four Electronic Handheld is off. There is no off button, so you will need to let it shut off automatically.

## Step 2 — Removing the battery casing.



- Take a Phillips head screwdriver and remove the (9.1mm length) #2 screw in the middle of the battery casing.
- Slide the cover off and remove the battery.

## Step 3 — Removing/Replacing the Back Casing



- Using a Phillips head screwdriver, remove the four (7.1mm- length) #3 screws that hold the back casing in place.
  - Carefully remove the back casing.
- ⚠ When removing the back casing, make sure not to rupture the wires that connect the speaker to the circuit board.

To reassemble your device, follow these instructions in reverse order.