



Motorola Moto G 1st Generation Battery Replacement

An easy step-by-step guide for replacing your battery with minimal efforts.

Written By: Radostin Lobodov




 **TOOLS:**

- [iFixit Opening Tools](#) (1)
 - [T5 Torx Screwdriver](#) (1)
 - [Tweezers](#) (1)
-

Step 1 — Rear Panel



 Before you start following any of the steps of this guide, completely turn the device off.

- Take the plastic back cover off by either using a plastic Pry tool or simply using your hands. Start from the bottom by the charging port
- Remove any installed SIM card and memory microSD cards.
 - Push the SIM card into the phone, and the spring eject mechanism should release the card.
 - The microSD memory card(s) may not have an eject mechanism. If so, they must be removed **carefully** by pushing on the raised edge/bump that is built onto the card. Use your fingernail or a plastic or rubber tool, but not one that will scratch and damage the delicate card.

 Patience must be taken to prevent irreversible damage and loss of data on the card.

Step 2 — Removing the Screws



- Unscrew the 3.5mm screws, total of 14, located on the back protective cover by using a T5 Torx screwdriver.

Step 3 — Battery Cover



- Use a plastic opening tool to remove the protective cover.
- ⚠ Carefully work the plastic tool around all the edges of the phone.
- ⓘ The protective cover holds the **Volume** and the **Home** buttons which might fall off the assembly when the cover is removed.

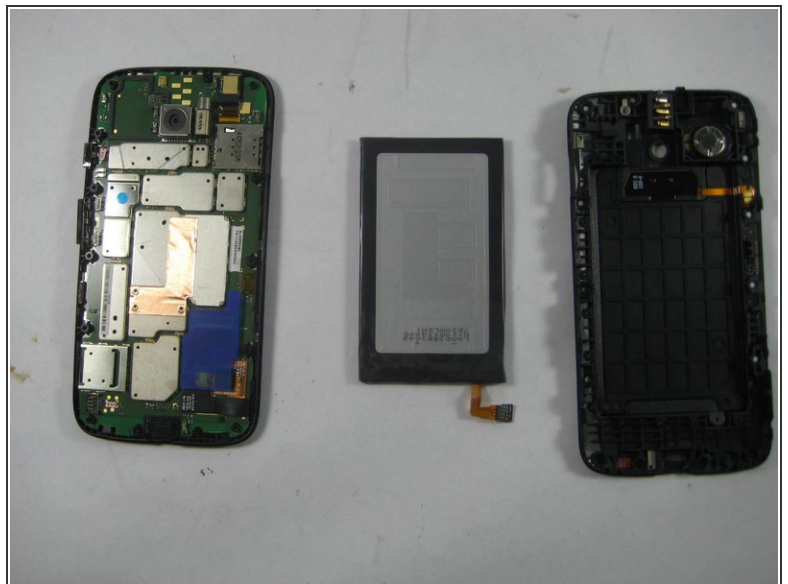
This document was generated on 2021-03-22 06:36:53 AM (MST).

Step 4 — Disconnecting the Battery




- Disconnect the connection between the Battery and the Mother Board by using the Pry tool.

Step 5 — Removing the Battery



- With the battery already disconnected, work around its edge with the pry tool to remove it from the assembly.

 The battery is attached with a sticker, so it may take some work to pry up. Just work at it slowly and carefully until you get it.

To reassemble your device, follow these instructions in reverse order.