



Nokia Lumia 920 Back panel Replacement

Replace the back panel if: cracked, charging port is broken, panel is cracked.

Written By: Jonathan



INTRODUCTION

Remove the back panel to access the internal components of your Nokia Lumia 920.

TOOLS:

- [T5 Torx Screwdriver](#) (1)
 - [iFixit Opening Tools](#) (1)
 - [SIM Card Eject Tool](#) (1)
-

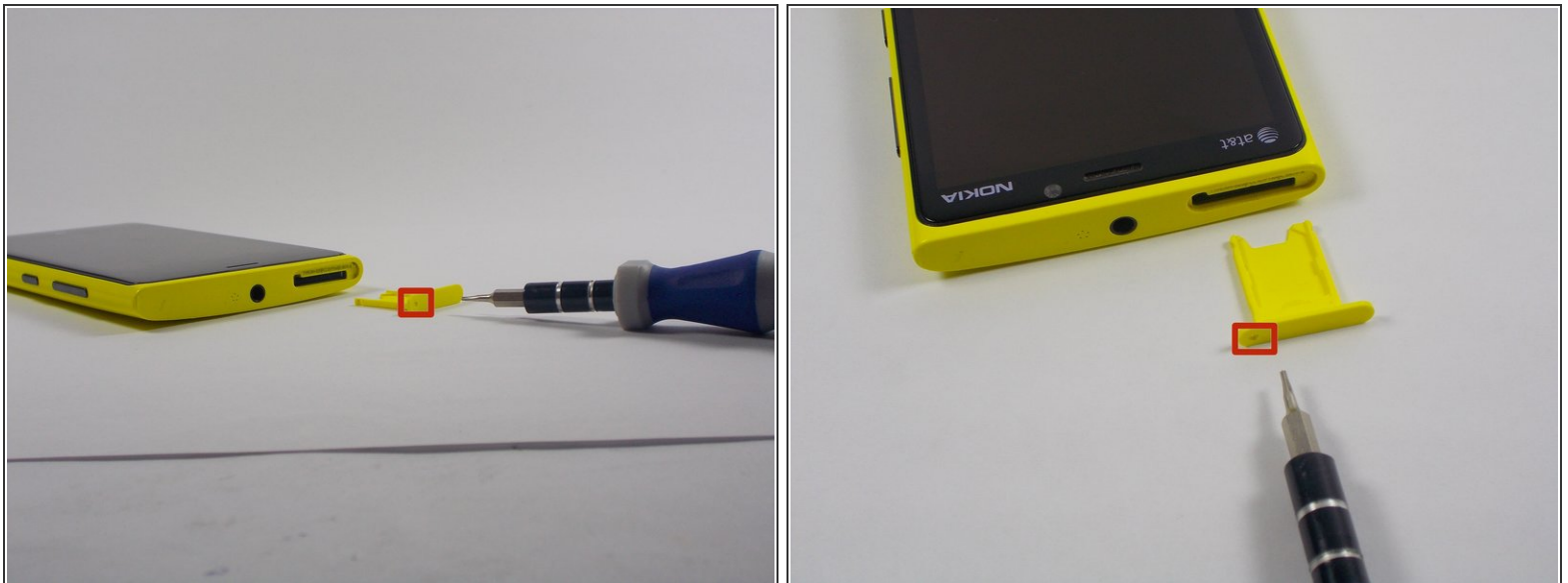
Step 1 — Remove the Bottom Screws



i Make sure the phone is off.

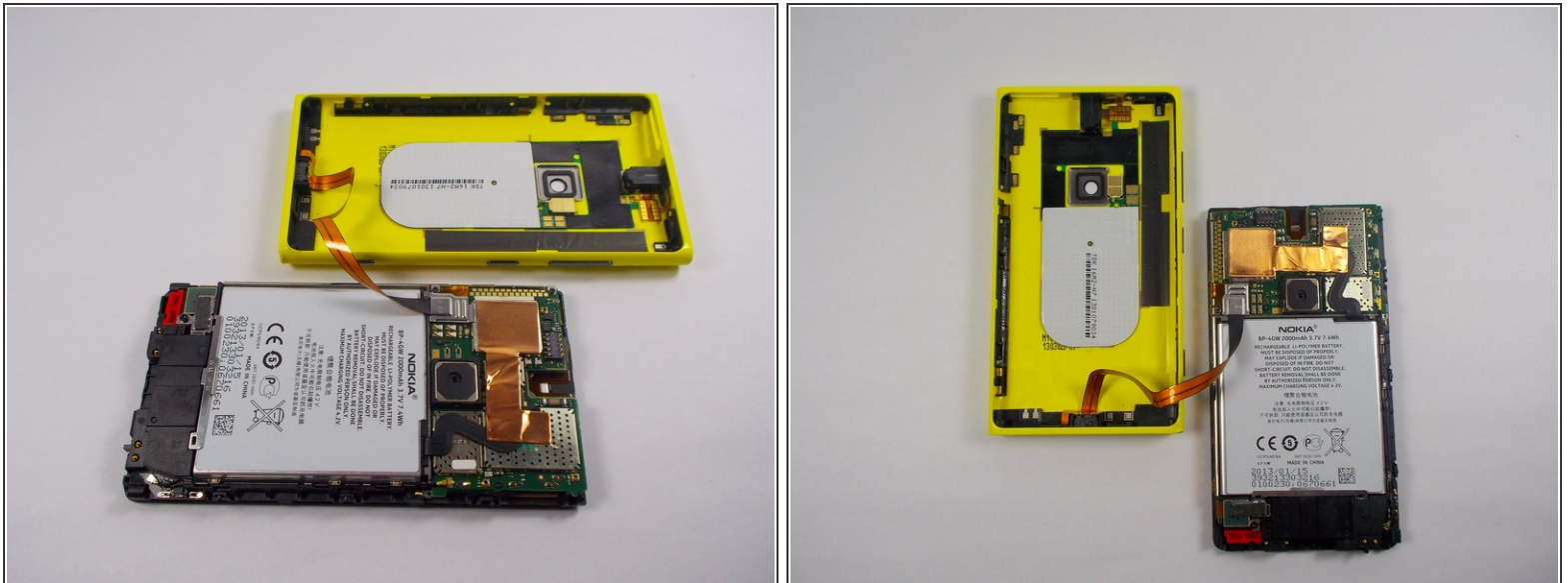
- Use the T5 screwdriver to remove the two 8.6mm long screws, located at the bottom of the phone. (Head size is 2.5mm)

Step 2



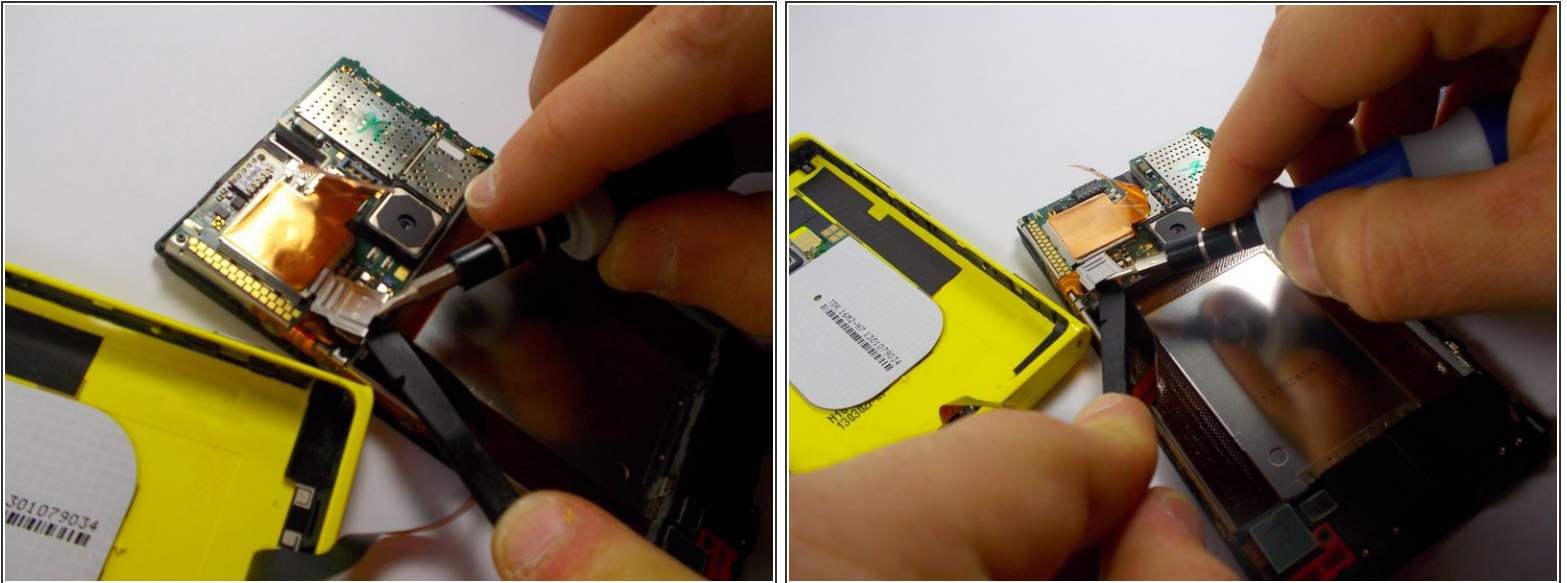
- Use the smallest Torx screwdriver or another small poking tool and push into the hole on the SIM card slot. The plastic SIM protective piece should pop out quite easily.
- Put that plastic piece aside.

Step 3



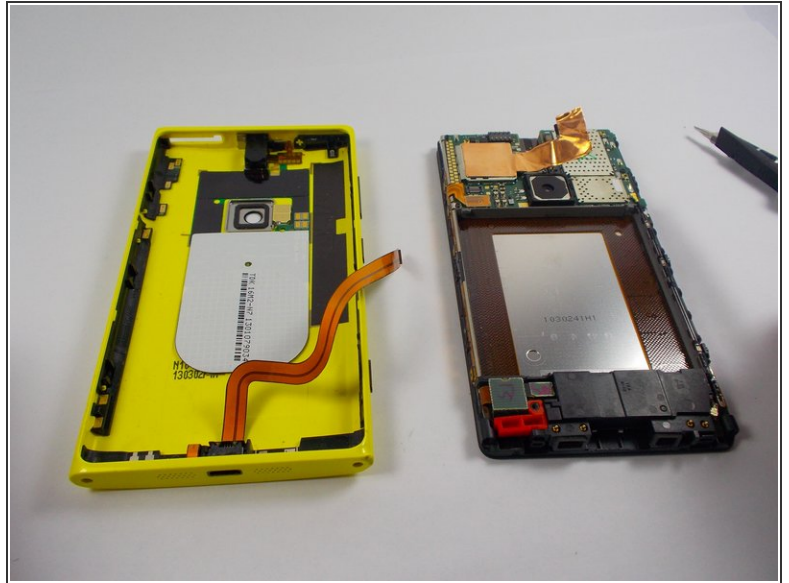
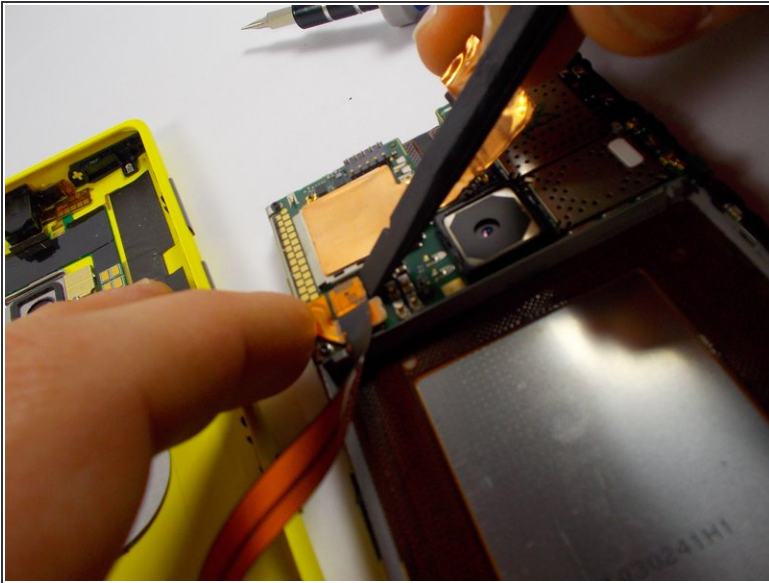
- Once both screws on the bottom are removed, and the plastic SIM protective piece is removed, gently push on the outside of the screen.
- The screen should become separated using little force. And should like the pictures shown once complete.

Step 4



- i** This step may be easier to remove the battery first, but it is not mandatory.
- Place the spudger tool or flat plastic tool on top of the ribbon cable to avoid damaging it when prying up on the metal clip.
 - Use a plastic opening tool, or gently use a small metal flat-head screwdriver to pry up the metal clip. (It is recommended to use a plastic tool; However, if the opening tool does not work or fit into the small opening underneath the clip, use the flat-head.)

Step 5



- Once the metal clip is removed, gently pry up on the ribbon cable connection, located underneath the metal clip you have just removed.

To reassemble your device, follow these instructions in reverse order.