



iRobot looj 120 Controller Buttons Replacement

If a button on the iRobot Looj 120 has broken, and is no longer working, you may have to remove the button. This guide will show you how to replace the rear motor.

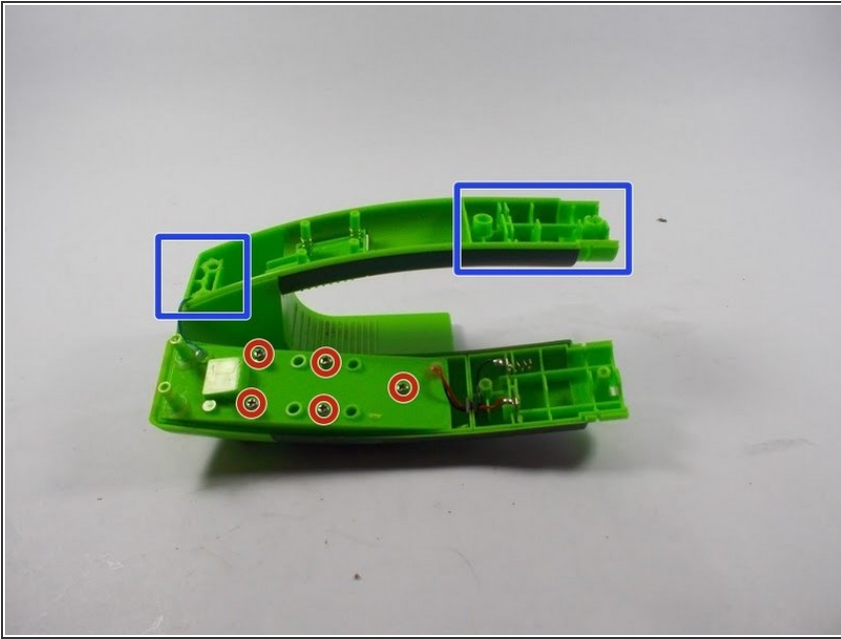
Written By: Lucas Otto



 **TOOLS:**

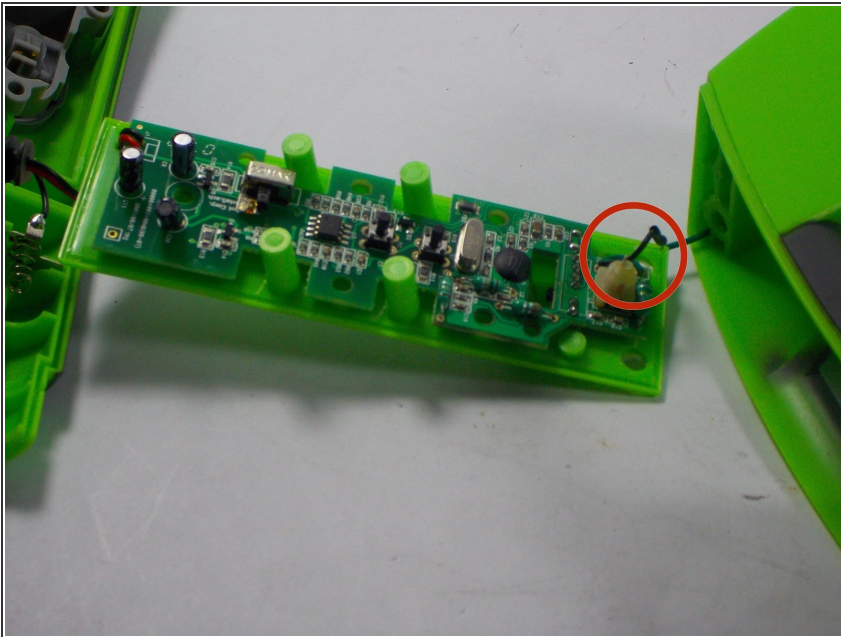
- [Phillips #0 Screwdriver](#) (1)
 - [Flathead Screwdriver](#) (1)
-

Step 1 — Removing Screws



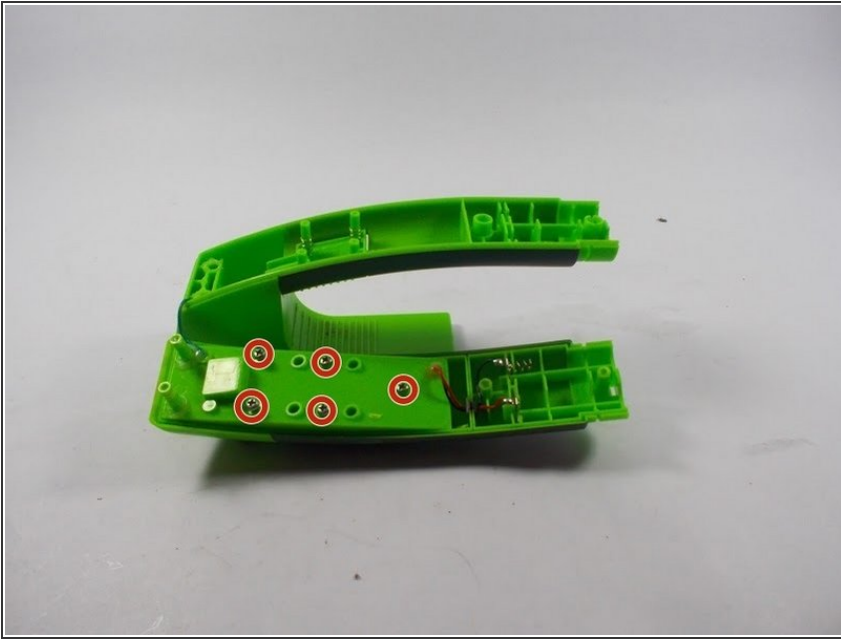
- Remove the four exterior screws located under controller and on the handle.
- Remove the five screw shown, and then carefully remove top plate. Electrical components are attached to top plate.

Step 2 — Locate Circuitry



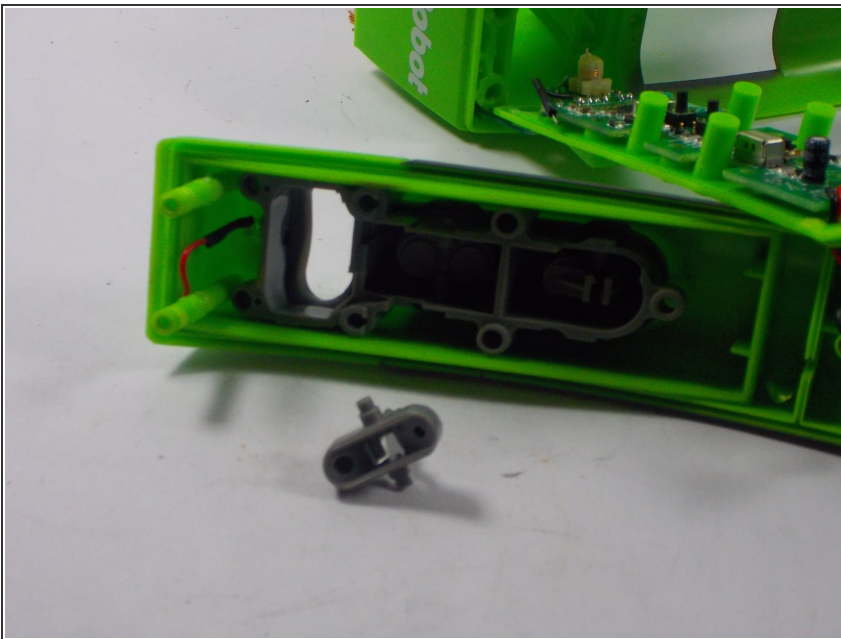
- Disconnect circuit board from power leads, and install new circuit board.

Step 3 — Remove Exterior Screws



- Remove the four exterior screws to gain access to inner components. These screws are located on the bottom of the controller and on the handle.
- Remove the five inner screws to access the Buttons

Step 4 — Accessing the Buttons



- Remove top plate carefully so that none of the electrical components are damaged.
- Remove broken button and insert new button into the mounting holes.

To reassemble your device, follow these instructions in reverse order.