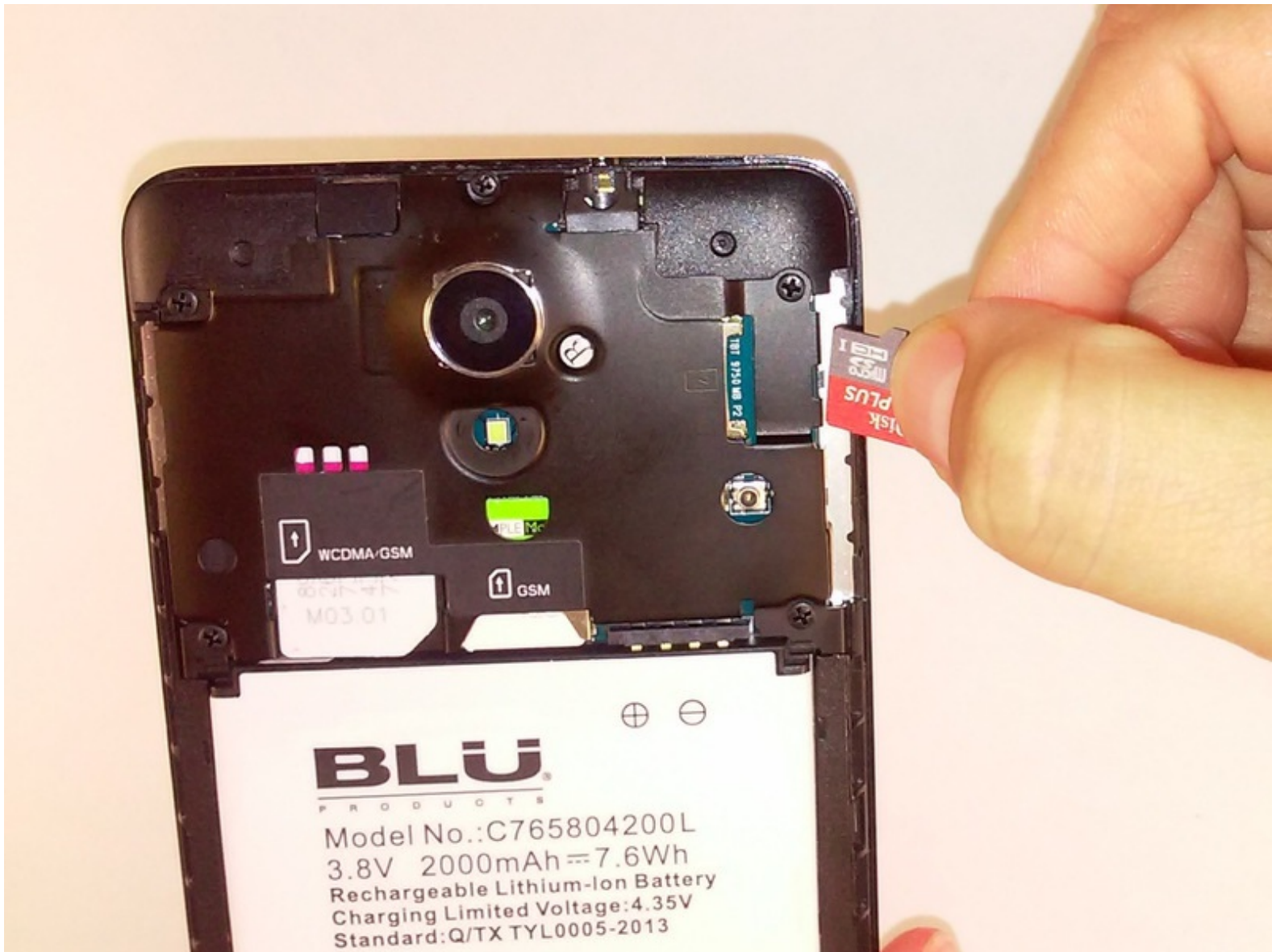




# Blu Studio 5.0 S II MicroSD Card Replacement

This guide will accomplish the memory card replacement.

Written By: Sandra Estevane



## INTRODUCTION

This guide will show you how to replace the memory card of the Blu Studio 5.0 S II.

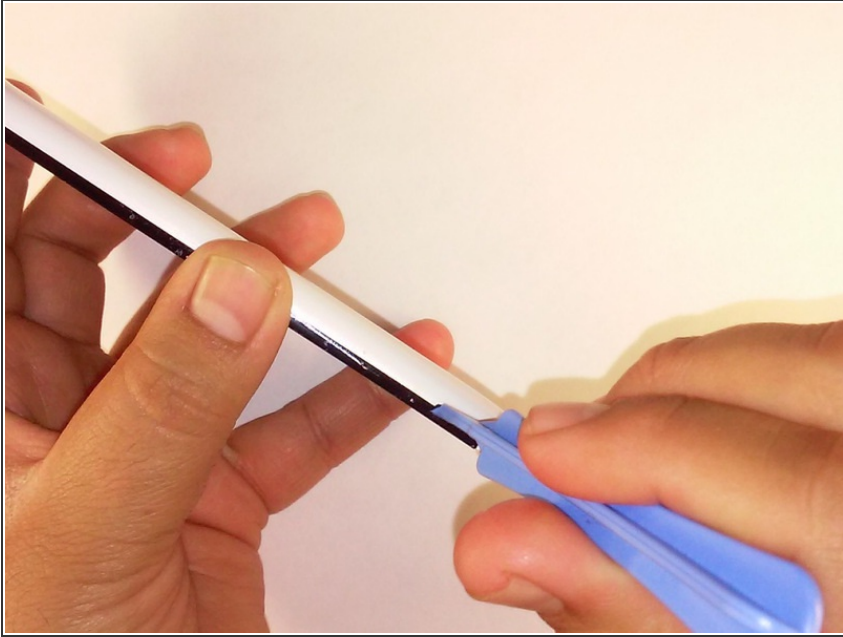
---



### TOOLS:

- [iFixit Opening Tools](#) (1)
-

## Step 1 — Remove back cover



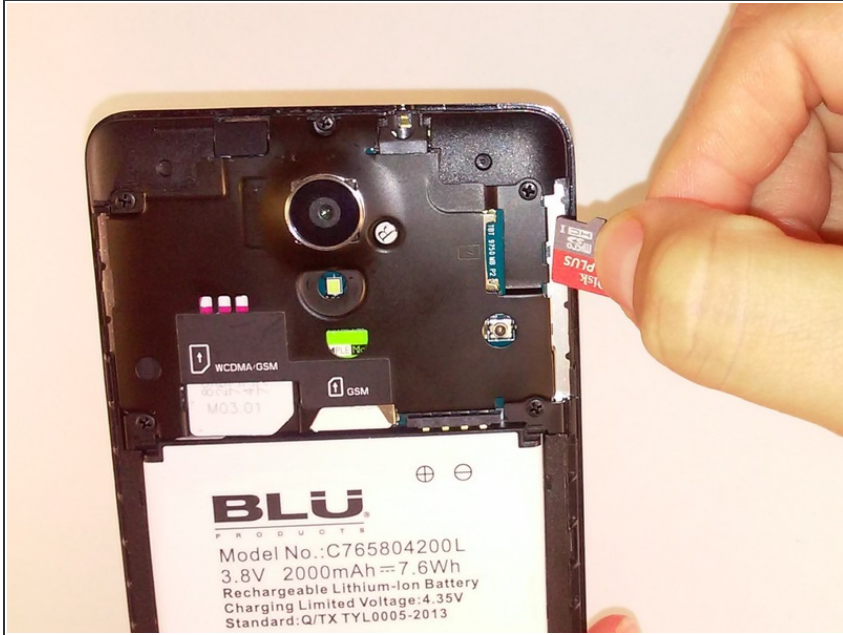
- Remove the back cover of the phone with the plastic opening tool.

## Step 2 — Remove memory card



- Using a pair of tweezers or your fingers, gently pull out the memory card.

### Step 3 — Insert new memory card



- Replace the old memory card by inserting new memory card.

To reassemble your device, follow these instructions in reverse order.

This document was last generated on 2017-09-30 03:40:34 PM.