



Xbox 360 Optical Drive Replacement

Written By: Walter Galan



INTRODUCTION

This guide is used as an internal prereq.

Step 1 — Optical Drive



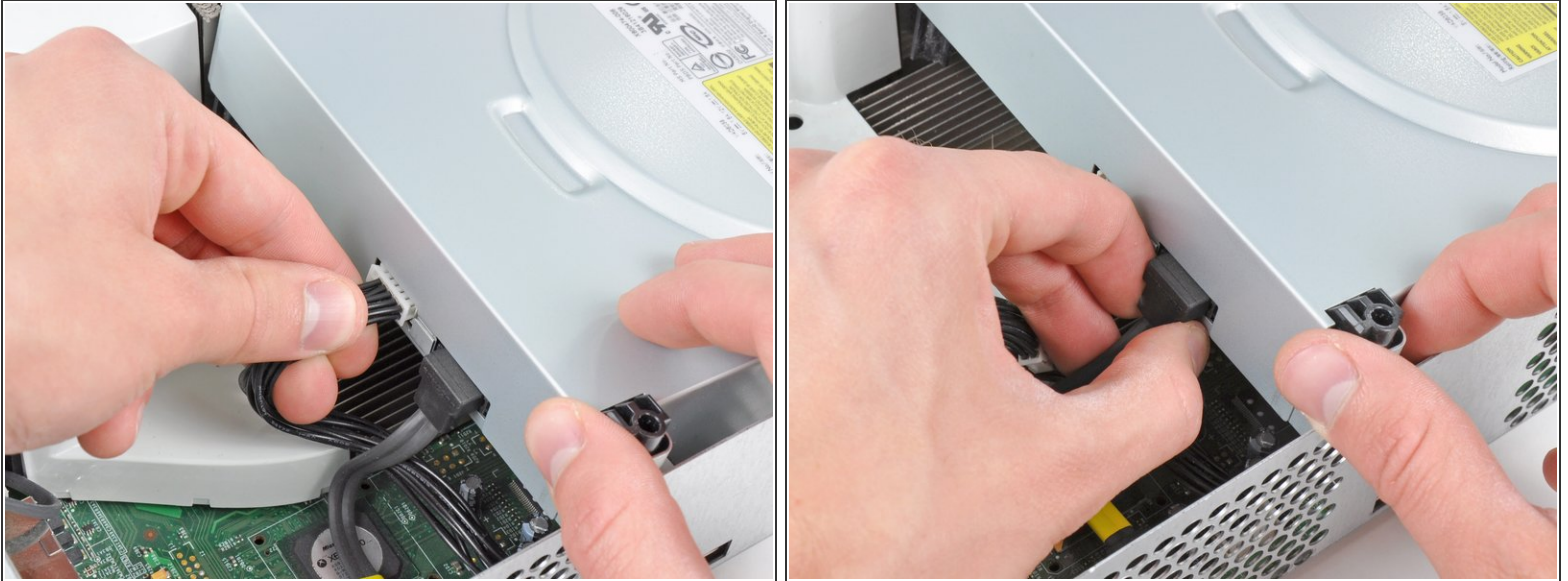
- Peel the silver tape securing the optical drive to the metal casing.

Step 2



- Slightly lift the optical drive upwards to gain clearance to disconnect the SATA and power connectors located on the backside of the optical drive.
- ⚠** Don't try to completely remove the optical drive just yet. Two cables still connect it to the motherboard.

Step 3



- Grab the power connector by its cables and pull it straight out of its socket on the optical drive.
- Disconnect the SATA data connector from its socket on the optical drive by pulling it straight away.

Step 4



- Lift the optical drive assembly out of the metal casing.

To reassemble your device, follow these instructions in reverse order.