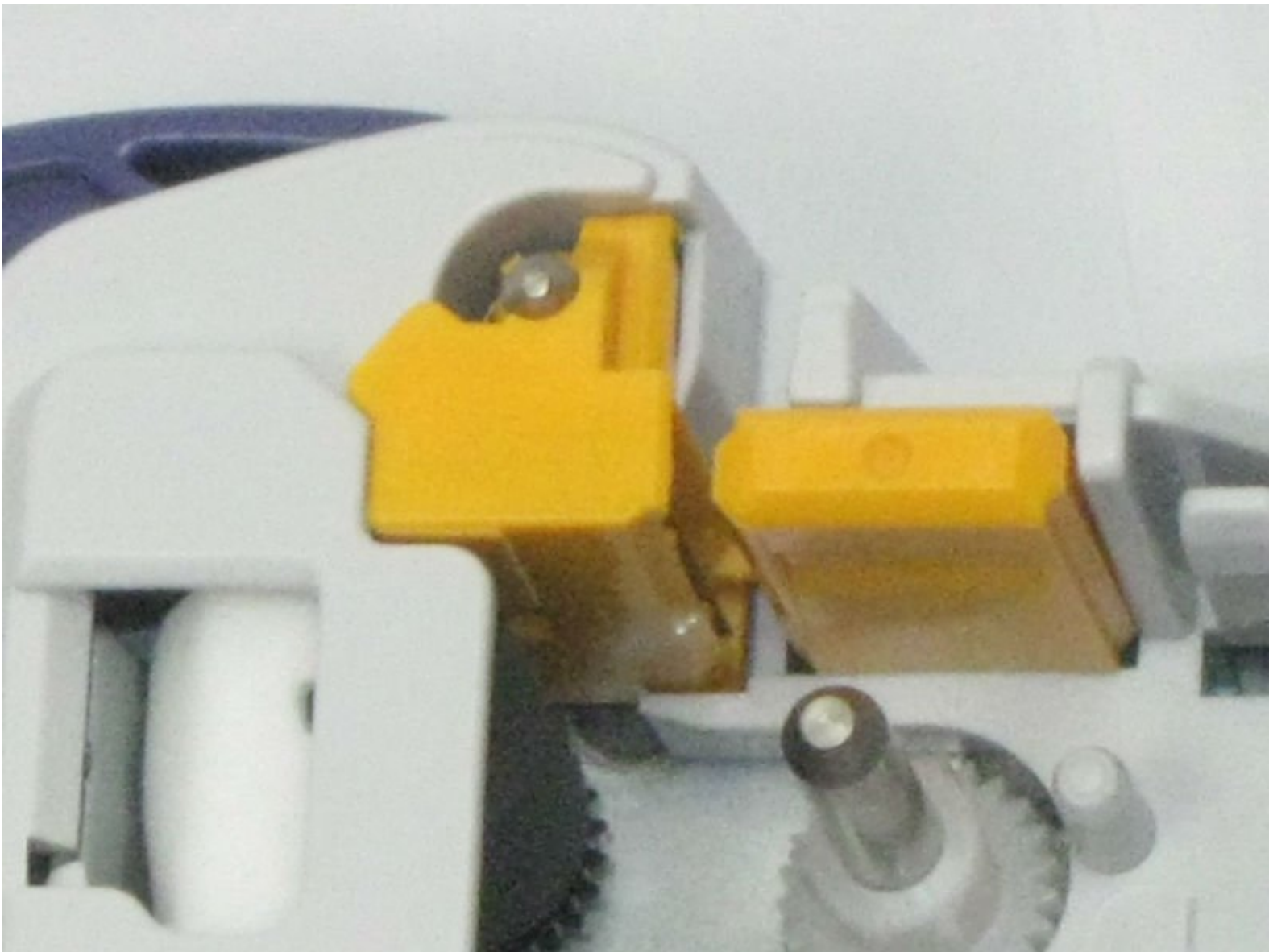




Brother PT-1010 Cutter Blade Replacement

This guide shows you the process of replacing a blunt or broken cutter blade unit on your PT-1010 device.

Written By: Haley Sweet

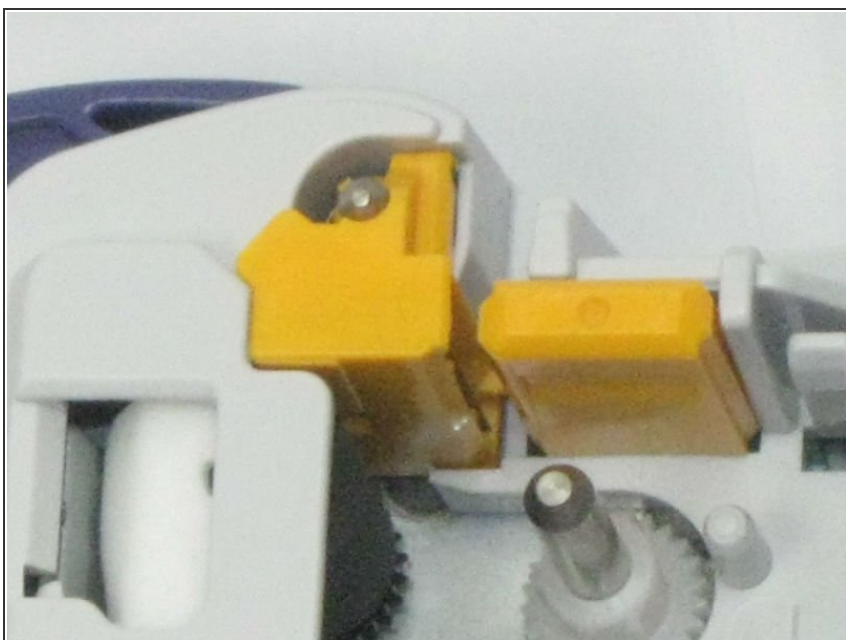


Step 1 — Remove Back Cover



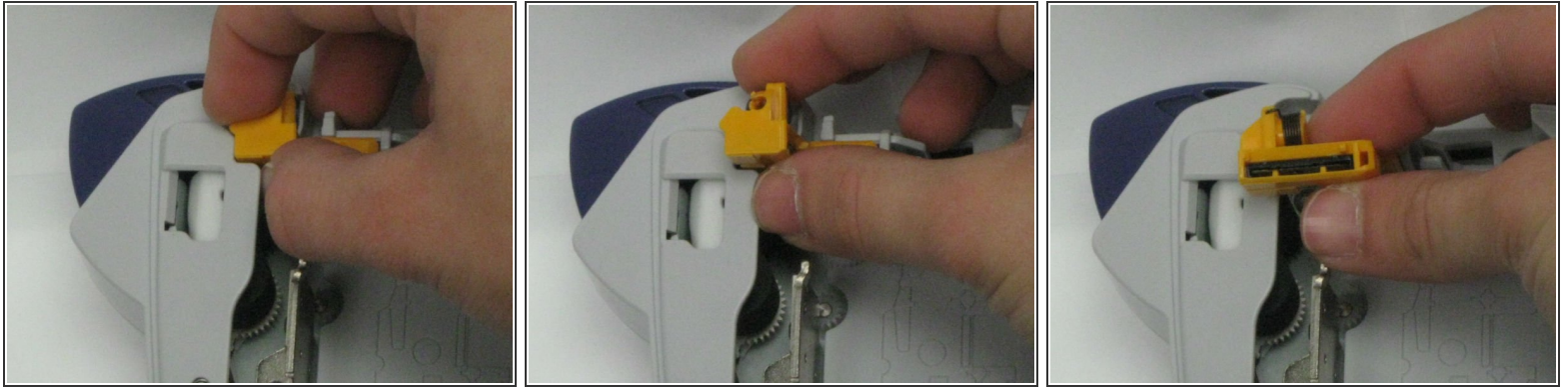
- Open the back cover of the device by pressing on the indication arrow and pulling it open.

Step 2 — Locate Cutter Blade Unit





- Locate the yellow cutter blade unit as shown in the photo.

Step 3 — Remove Cutter Blade



- Using your thumb and forefinger, pull up, applying a small amount of pressure until the blade loosens and comes out.

 Be very careful when pulling out the cutter blade, it is very sharp.

 The Brother no. TL 5 Cutter Blade Unit is required for replacement.

To reassemble your device, follow these instructions in reverse order.