



Toshiba Satellite 1805-S177 Keyboard Replacement

Keys stuck? Replace your old, broken keyboard with this guide!

Written By: Hannah



INTRODUCTION

Oftentimes, things get stuck in between keys, or keys labels get worn out with use. This guide will assist in replacing that broken keyboard with a new one.

TOOLS:

- [Flathead Screwdriver](#) (1)
 - [Phillips #00 Screwdriver](#) (1)
 - [Spudger](#) (1)
-

Step 1 — Keyboard



- Stick a spudger in one of the sides of the top panel. Lift slowly from one side to the other and it will pop off.

Step 2



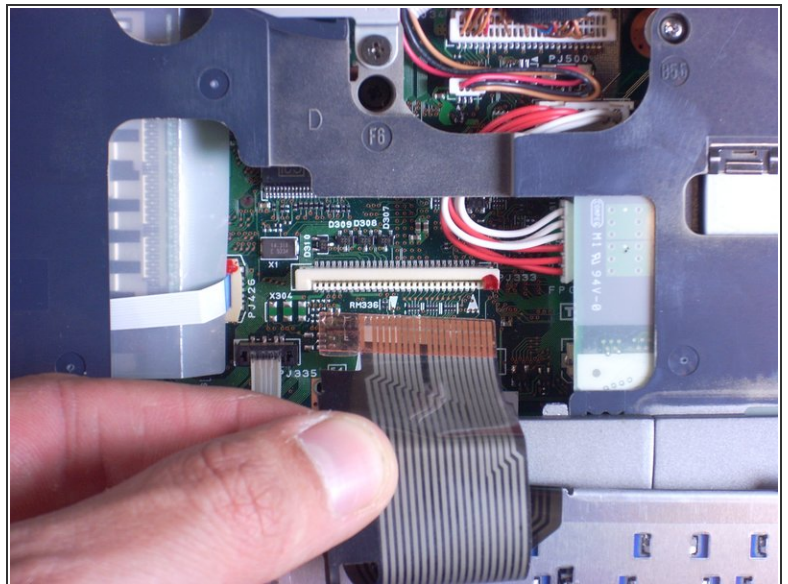
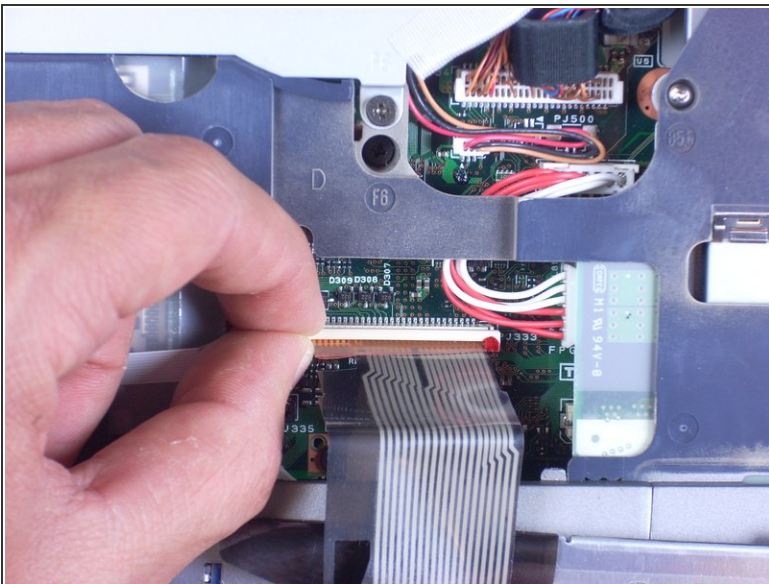
- Using an Phillips screwdriver, unscrew and remove two screws labeled B2.6.

Step 3



- Using your hands, lift keyboard up toward you, starting from the edge closest to the screen.
- ⚠ The keyboard is still connected to the laptop by a ribbon. Place the keyboard gently on top of the trackpad, keys side down.

Step 4



- Find the white ribbon connector (where the keyboard is still attached to the rest of the laptop).
- Slide the white ribbon connector up and lift the ribbon out of it.

To reassemble your device, follow these instructions in reverse order.