



# Toshiba Satellite 1805-S177 RAM Replacement

Tired of having your computer crash when it runs lots of programs at once? Replace your RAM to get help rid your life of constant restarts and closing programs to make room for others.

Written By: Hannah



---

## INTRODUCTION

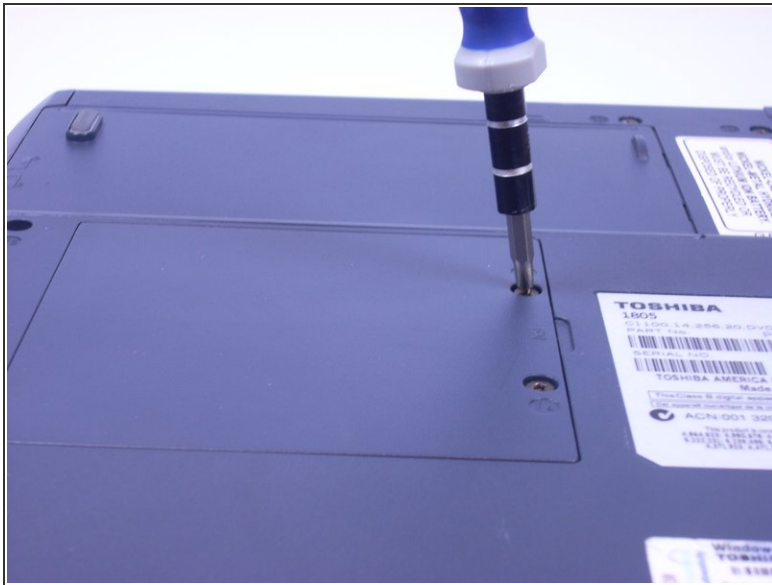
For the individual who constantly needs to run lots of programs at once, RAM that comes with a laptop often isn't enough. This guide shows you how to replace RAM that is either too small or gone bad.

---

### TOOLS:

- [Flathead 3/32" or 2.5 mm Screwdriver](#) (1)
-

## Step 1 — RAM



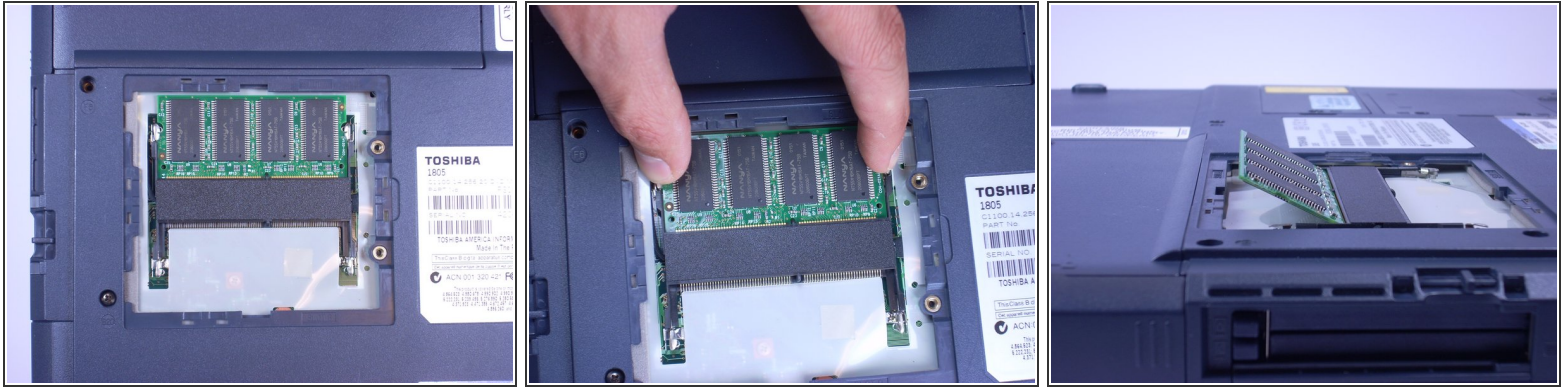
- Using a Phillips screwdriver, unscrew and remove two screws labeled F4 from the plastic piece on the back of the laptop with the RAM indicator.

## Step 2



- Using a flathead screwdriver or a shiv, insert the flathead of the screwdriver in the space between the plastic piece and the rest of the laptop. Pry the plastic piece off by moving the flathead screwdriver up and down.

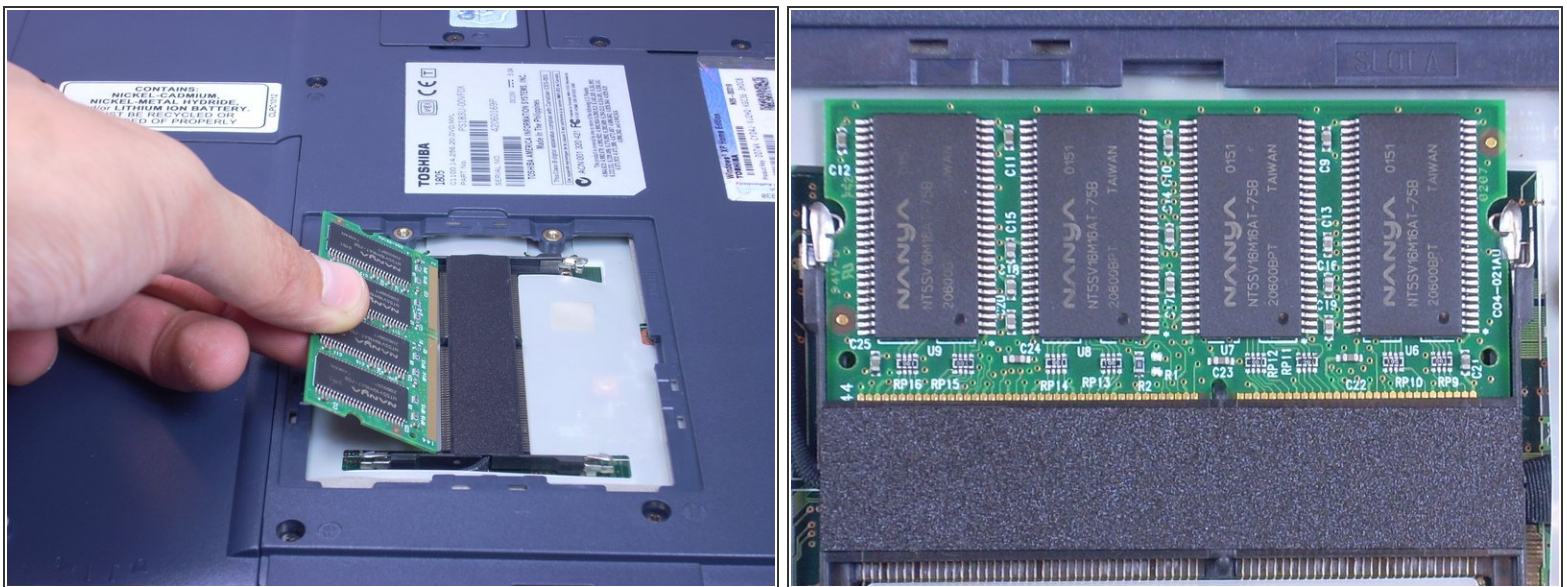
### Step 3



- Using your fingers, push two shorter sides of RAM away from each other.

**i** Note: The RAM should pop up automatically.

### Step 4



- Using your fingers, pull RAM out of the laptop by gently lifting up.

**!** When reinstalling ram be sure to line up the ram correctly with the slot and notch in the ram

To reassemble your device, follow these instructions in reverse order.

This document was last generated on 2019-07-30 04:05:45 AM.