



Brother PT-1010 Keyboard Replacement

This guide will show you how to remove and replace the keyboard of your Brother PT-1010 label maker.

Written By: Haley Sweet



 **TOOLS:**

- Phillips #00 Screwdriver (1)
-

Step 1 — Remove Back Cover



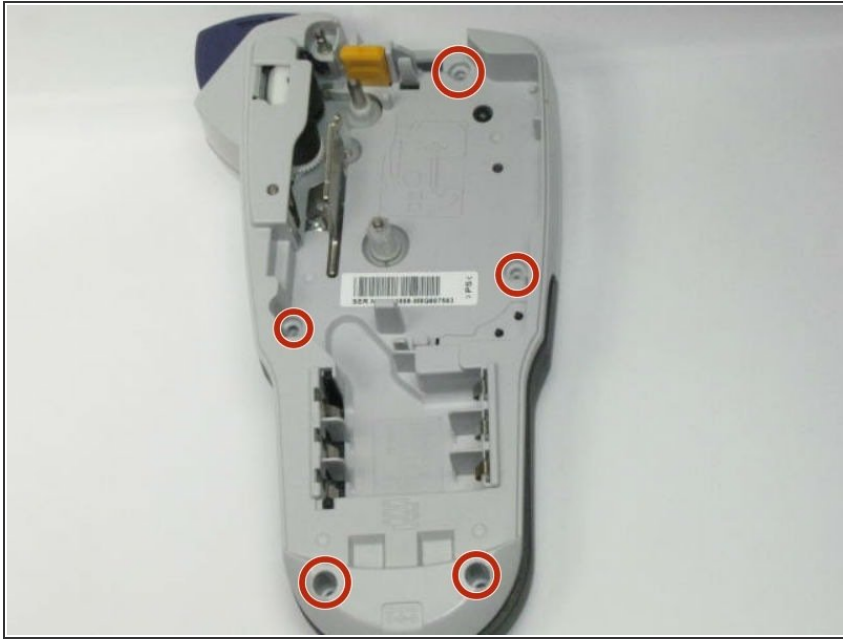
- Flip the device over and press down on the indication arrows located at the top center of the back cover and pull it open.

Step 2



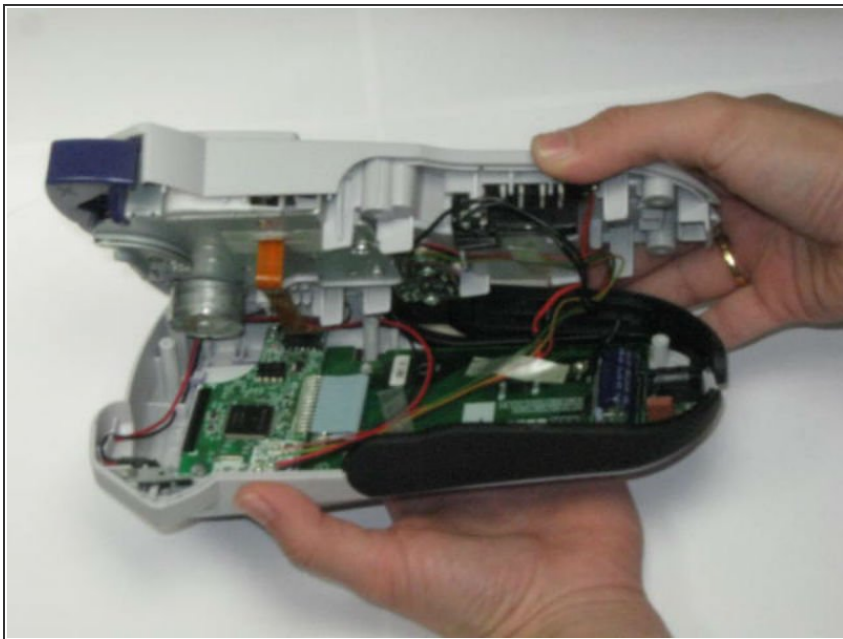
- Remove batteries, cassette tape, and cutter blade.

Step 3 — Remove Screws



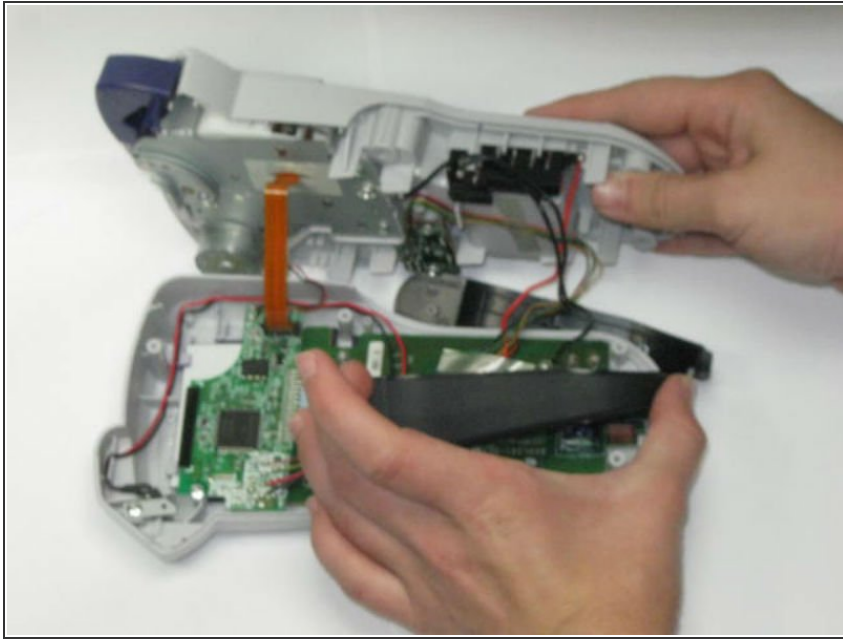
- Use a phillips size #00 screwdriver to unscrew the 5 corner screws circled in the picture.

Step 4 — Separate Device



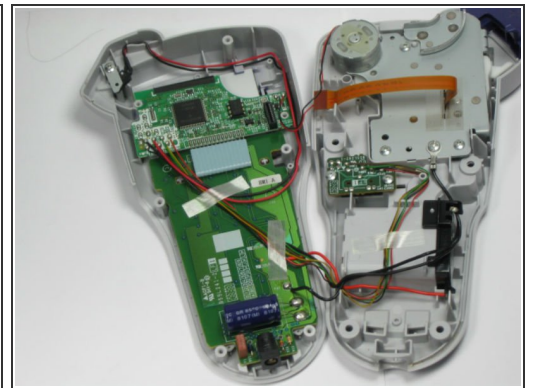
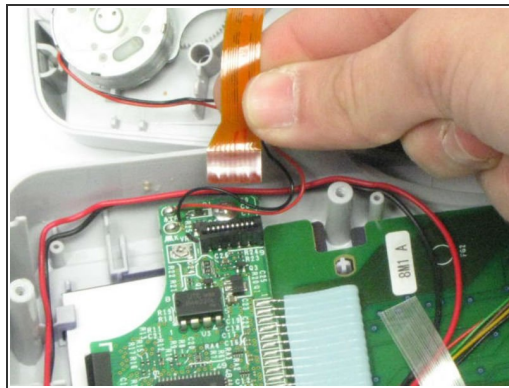
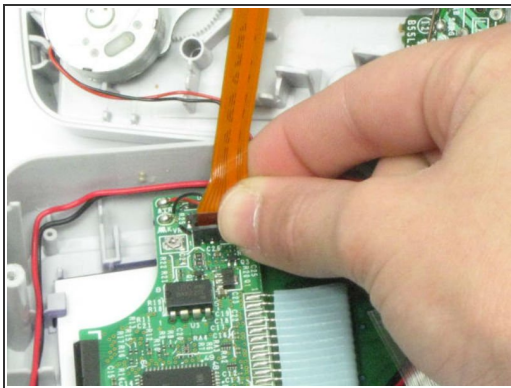
- Separate the top of the device from the bottom. Be very cautious when you separate the device, there is a ribbon attaching the top to the bottom.

Step 5 — Remove side panels



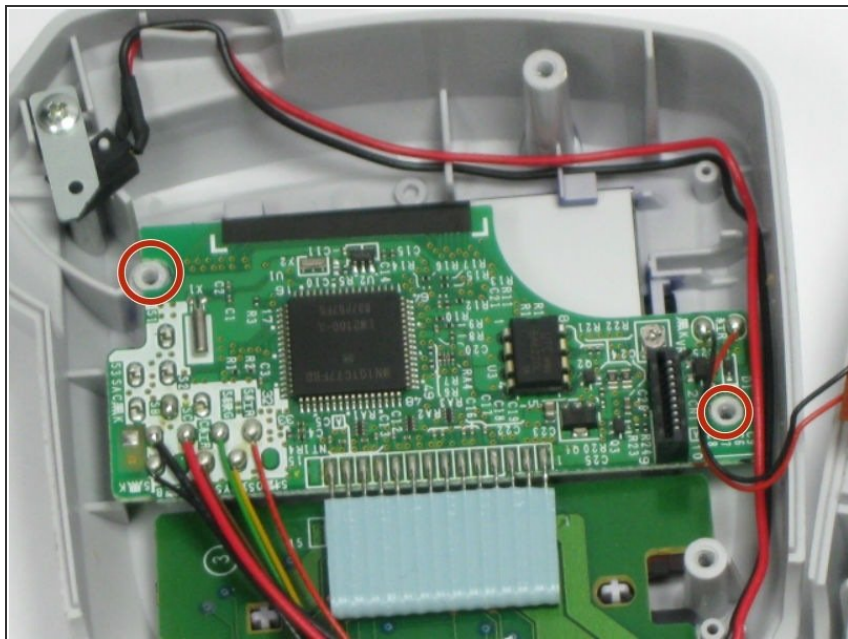
- Remove the two black side panels. They will easily fall out so just move them to the side until you are putting your device back together.

Step 6 — Pull Ribbon Out



- Using your index finger and thumb, pull out the golden ribbon from the green circuit board.

Step 7 — Remove Screws from Circuit Board



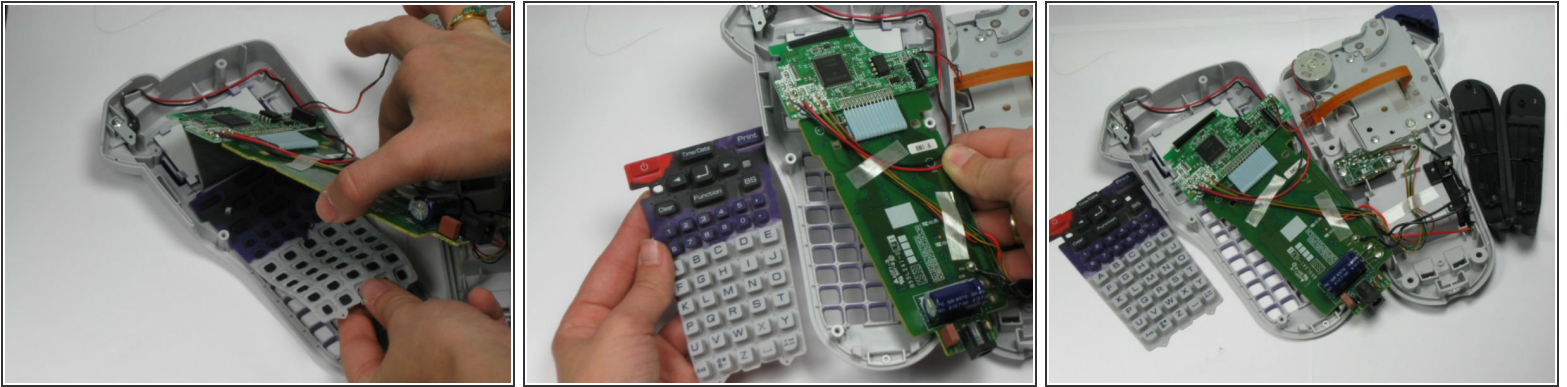
- Use a phillips size #00 screwdriver to remove the two screws, circled in red, from the green circuit board.

Step 8 — Remove Circuit Board



- Carefully remove the green circuit board by pulling it straight up. Be careful not to break the LCD cable ribbon that connects the circuit board to the device.
- ⓘ The ribbon is very fragile so be careful to break it when pulling up on the circuit board.

Step 9 — Peel Off Rubber Keyboard



- Underneath the circuit board you will find the rubber keyboard. Peel this off and remove it from the device.

To reassemble your device, follow these instructions in reverse order.

This document was last generated on 2019-07-10 02:45:02 PM.