



Toshiba Satellite 1805-S177 Hard Drive Replacement

Need more storage? Follow this guide to replace your hard drive

Written By: Hannah



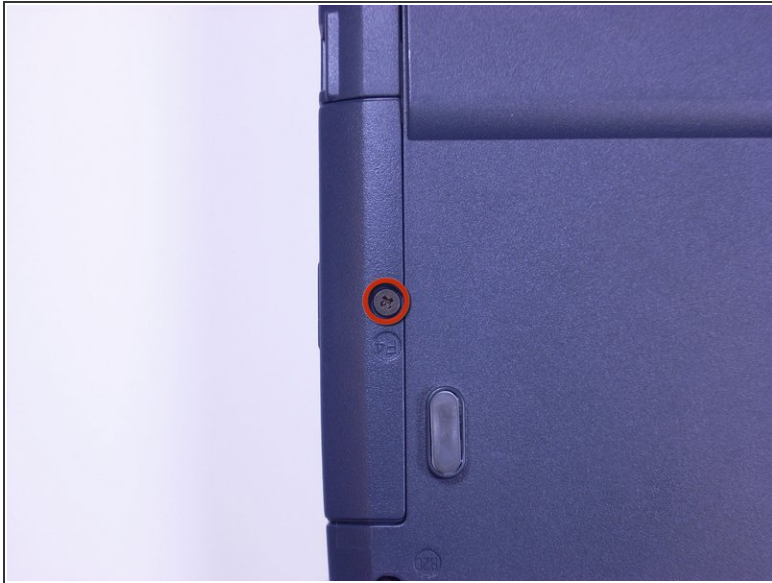
INTRODUCTION

This guide tells you how to replace the current hard drive in the laptop with one of better storage or functionality.

TOOLS:

- [64 Bit Driver Kit](#) (1)
-

Step 1 — Hard Drive



- Look at the bottom of the laptop. Using a Phillips screwdriver, unscrew and remove the screw labeled F4, located on the cover of the hard drive.

i The hard drive is located next to the CD drive.

Step 2



- Placing your finger on the raised grip, push up on the hard drive cover. This will remove the hard drive cover from the laptop.

Step 3



- Using a Phillips screwdriver, unscrew and remove the screw surrounded by the white plastic.

Step 4



- Pull the white plastic out toward you. This should remove the hard drive tray from the laptop.
- ⓘ This laptop does not have a hard drive, so the tray is empty. On your computer, the hard drive should be in the tray.

To reassemble your device, follow these instructions in reverse order.

