



ZTE Blade E Volume Button Replacement

This guide shows how to replace the volume buttons, located on the left side of the phone.

Written By: Sean Gardner



 **TOOLS:**

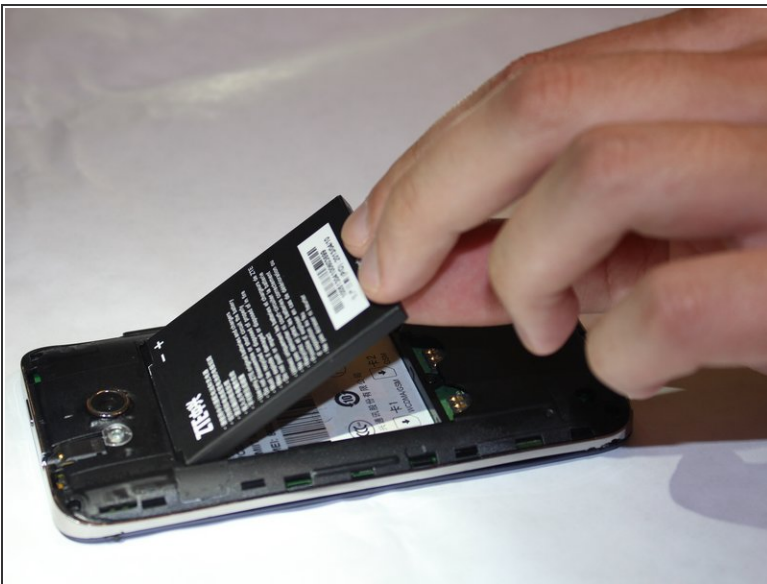
- [Spudger](#) (1)
 - [Phillips #00 Screwdriver](#) (1)
 - [Tweezers](#) (1)
-

Step 1 — Remove back panel from phone



- Using your finger nails or a spudger, remove the back panel from the phone.

Step 2 — Remove battery and microSD card



- Using your fingernails or a spudger, remove the phones battery and microSD card.

Step 3 — Remove back panel screws



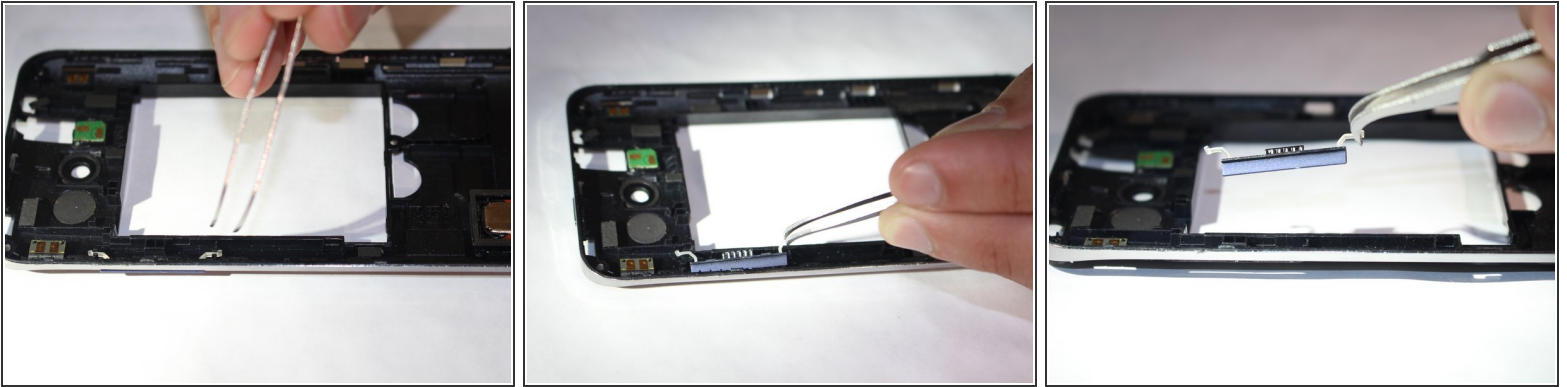
- Remove the five 4mm Phillip's #00 screws, circled in red, from the back panel.

Step 4 — Separate back panel from motherboard



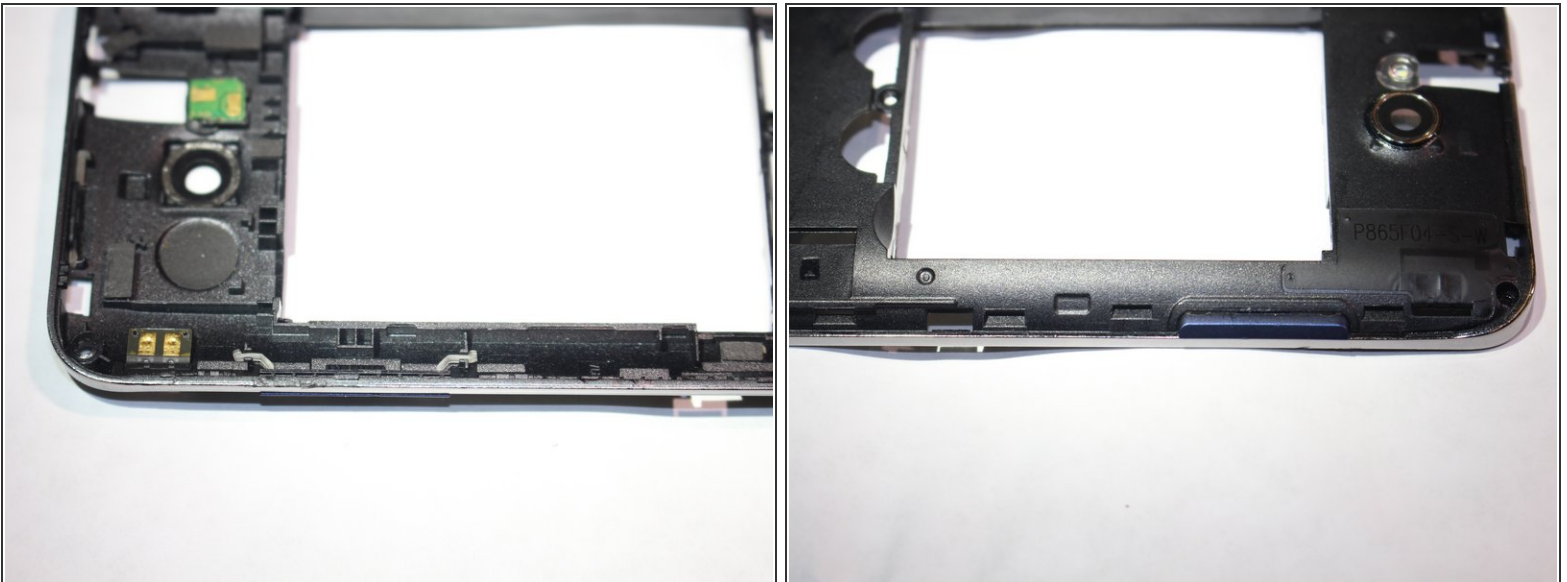
- Separate the back panel from the motherboard.

Step 5 — Remove volume button



- Using a pair of tweezers, remove the volume button by unlatching the two white bands holding it in place.

Step 6 — Replace volume button



- Either replace the volume button with a new one, or reinsert the old one using a pair of tweezers. It should look like the pictures when inserted properly.

To reassemble your device, follow these instructions in reverse order.