



Brother MFC-490CW Front Panel Replacement

This guide will show you how to remove and replace the front panel of the printer.

Written By: Matt



INTRODUCTION

Many functions, including the LCD screen dial pad and device functions can wear and no longer work and may need to be replaced.

TOOLS:

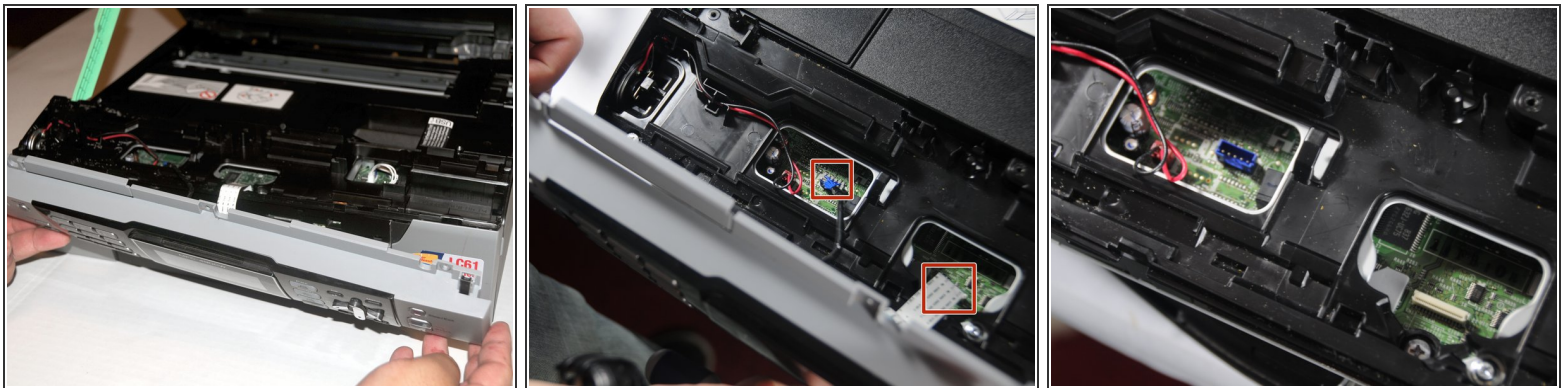
- [Phillips #2 Screwdriver](#) (1)
-

Step 1 — Remove screws holding the front panel



- Unscrew these three 12.1mm screws holding the control panel in place.

Step 2 — Unplug the panel from the rest of the printer



- Lift up the front panel from the device.
- Gently lift up and pull out the data cables that attach the panel to the printer.

To reassemble the front panel, follow these instructions in reverse order.