



WowWee MiP Robot Battery Replacement

Remove the battery pack and change the batteries in your WowWee MiP robot.

Written By: Moira Keahon



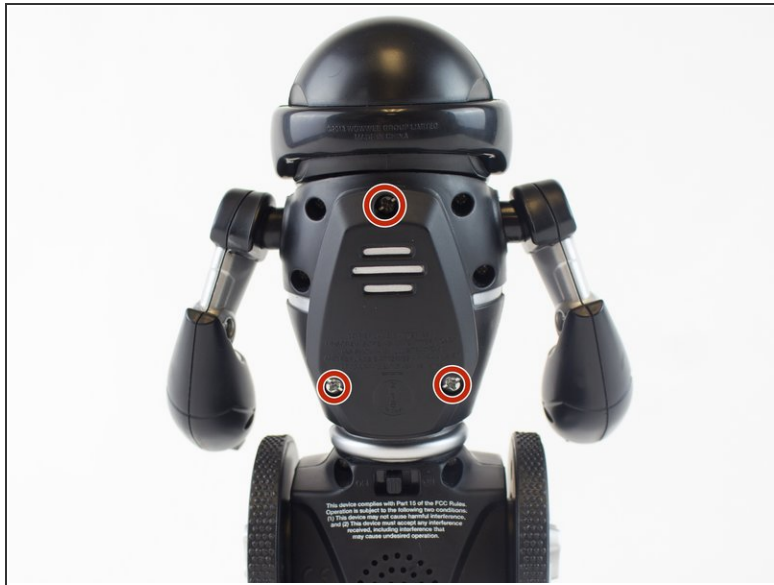
INTRODUCTION

The WowWee MiP robot has a tendency towards short battery life. If the MiP seems too slow or stops responding, use this guide to change the MiP's batteries. The MiP's batteries are located in a battery pack on the robot's back.

TOOLS:

- [64 Bit Driver Kit](#) (1)

Step 1 — Battery



- Remove the three 12.0 mm Phillips # 2 screws from the battery cover.

Step 2



- Carefully pull the battery pack from the robot.
- Remove the batteries from the battery pack.

To reassemble your device, follow these instructions in reverse order.