



Disassembling Power Mac G4 Cube Outer Case

Case

Taking off the outer case of the PowerMac.

Written By: Ryan Chun



INTRODUCTION

It is the first step in repairing the internal components of the cube.

TOOLS:

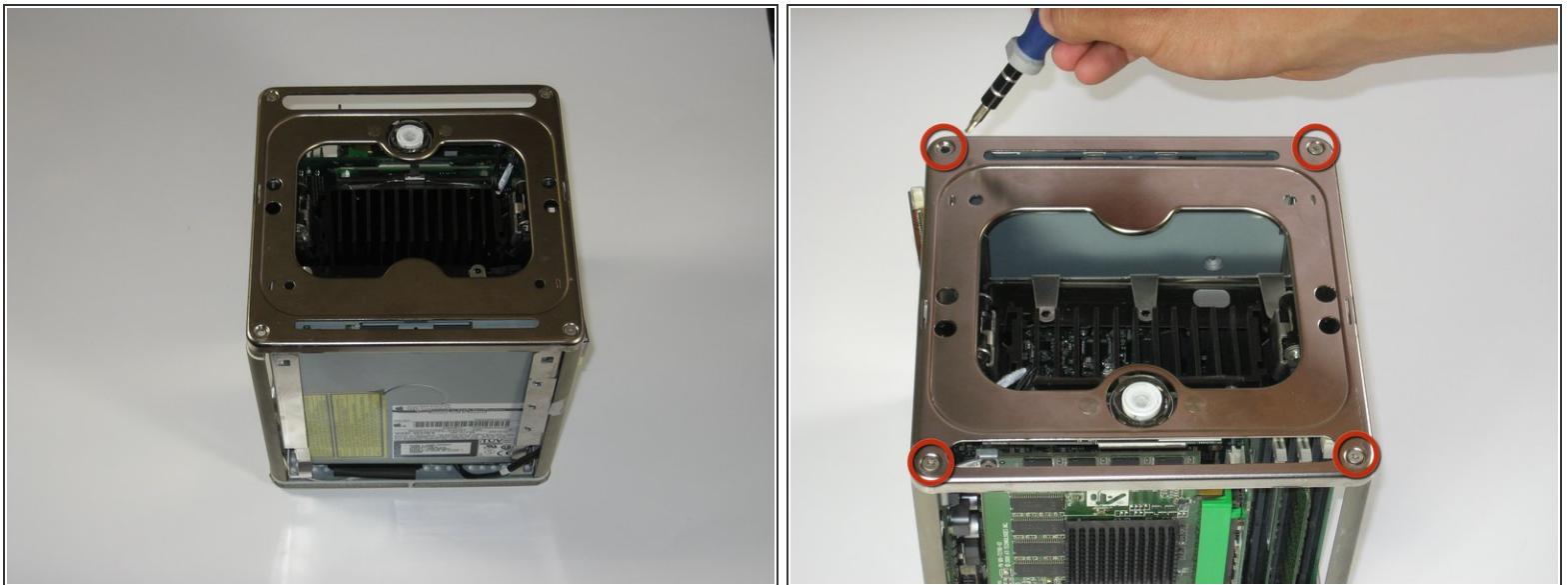
- [T10 Torx Screwdriver](#) (1)
-

Step 1 — Outer Case



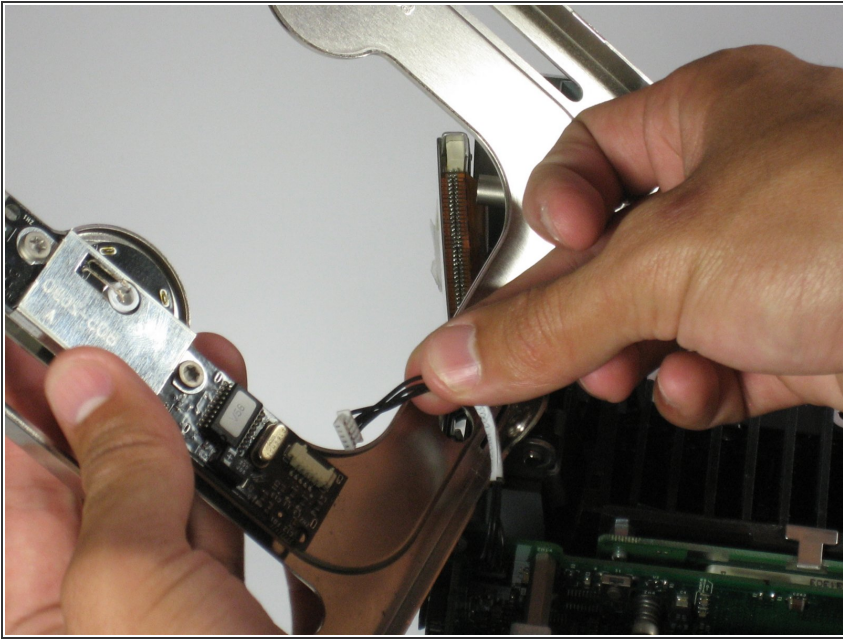
- Release the back handle of the PowerMac. Slowly pull out the cube by holding the end of the handle. Watch for any parts that may become entangled with the outer case.
- Push back the handle after you have taken the core out of the case.

Step 2



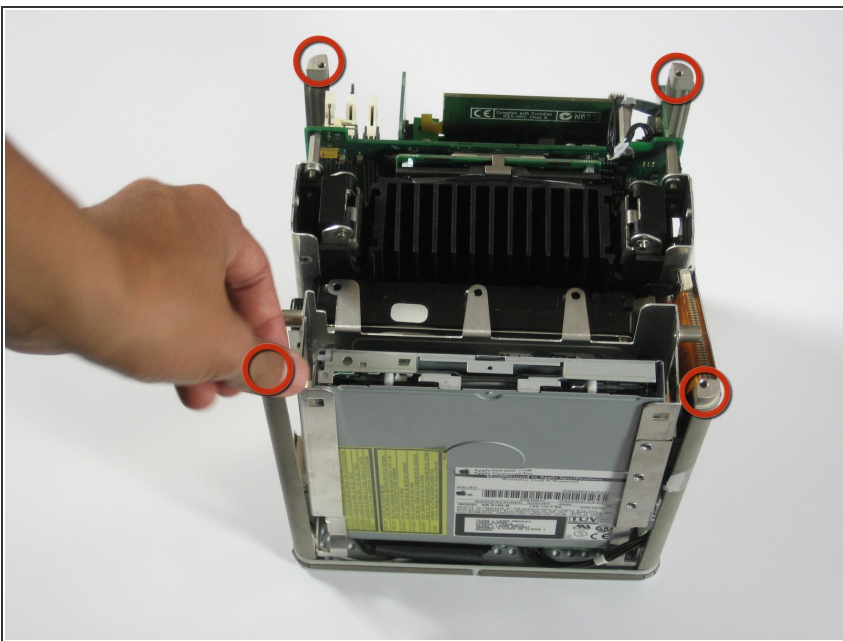
- Place the cube upside down and remove the four T10 Torx screws on the front plate. Then remove the two screws on each side.

Step 3



- ⚠ Slowly lift the plate off the cube and disconnect the power cord.

Step 4



- Remove the four pillars from each corner.
- ⓘ The pillars should come out fairly easily.

To reassemble your device, follow these instructions in reverse order.